

HANDLE·IT®



ORBITAL WRAPPERS

handleitinc.com



HANDLE·IT[®]

Semi-Automatic Orbital Wrappers 2

Automatic Bubble Wrap Dispenser 9

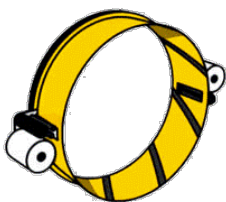
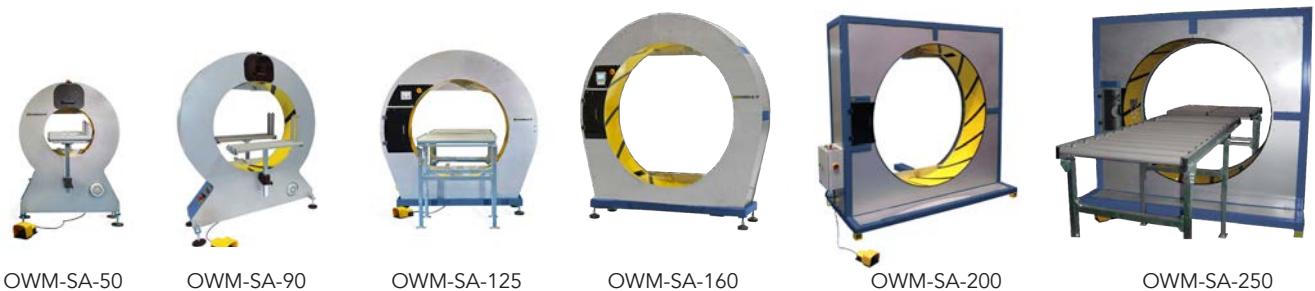
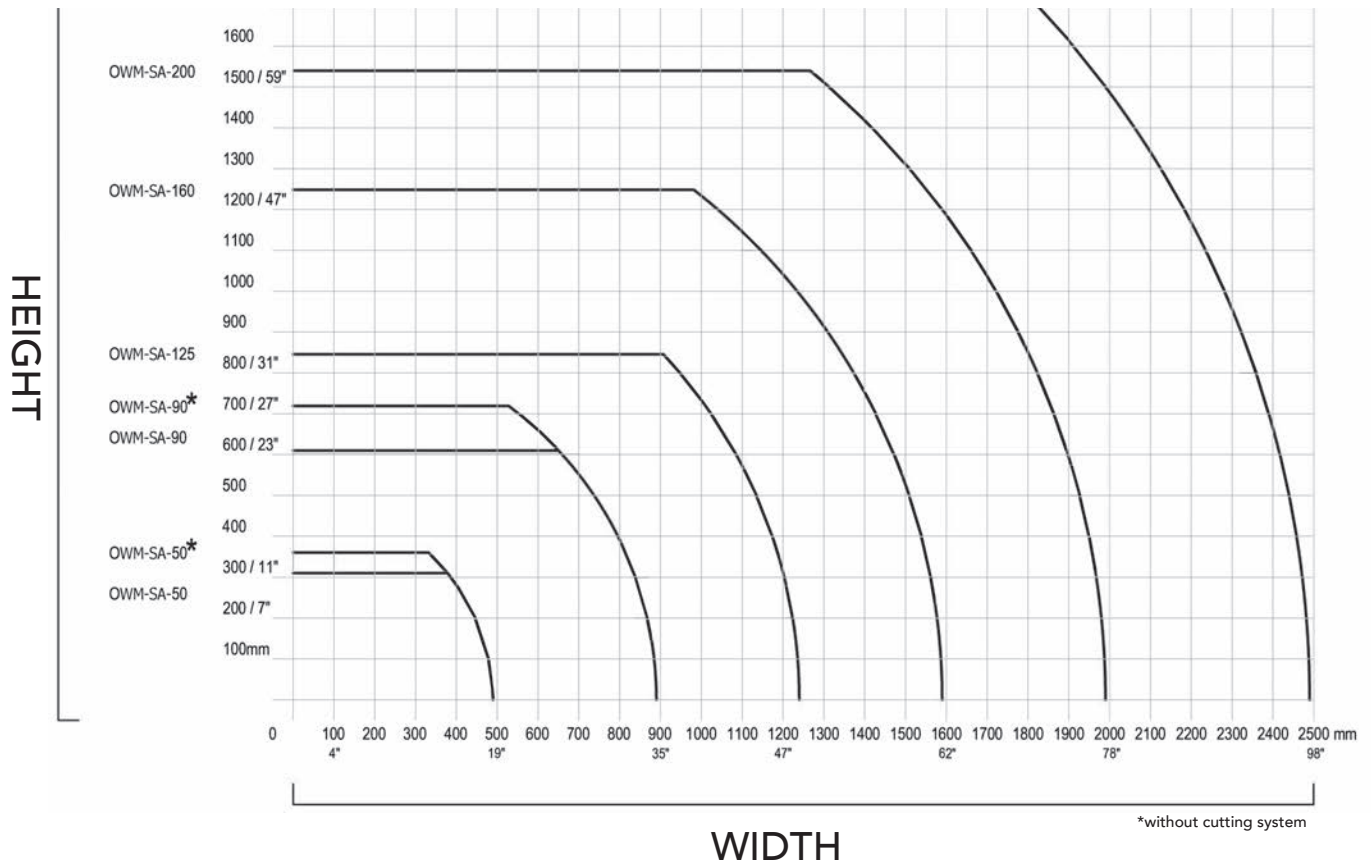
Automatic Orbital Wrappers 10

C-Style Orbital Wrappers 17

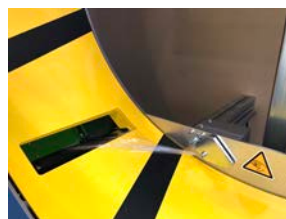
Machine Grade Stretch Wrap Film 19

Additional Handle It Products 21

SEMI-AUTOMATIC ORBITAL WRAPPERS



2-reel system which doubles the speed of your wrap.



Auto cut feature with non-exposed blade. Both efficient and safe.



Covered inner ring for ultimate safety.

OWM-SA-50



SAFETY FOOTSWITCH

OWM-SA-90

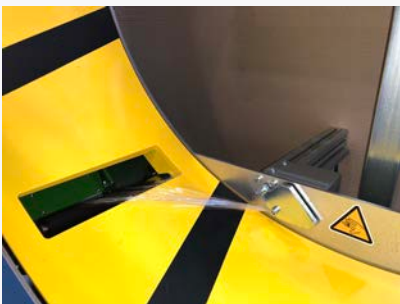


SAFETY FOOTSWITCH

HOW IT WORKS

Product is manually fed into the ring on rollers. The cycle is started with a foot pedal. The film is automatically cut and clamped at the end of the cycle.

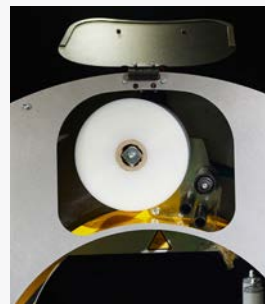
STANDARD FEATURES



Ring and Cutting Protection



Ring Protection



Reel Holder



Control Panel

COMMON APPLICATIONS

- Aluminum profiles
- Blinds
- Wood moldings
- Flooring
- Pipe
- Furniture kits
- Doors
- Shelves
- Fabric rollers
- Boxes
- Drawers

The Handle-It model 50 and 90 semi-automatic orbital wrappers are designed to improve efficiencies in wrapping your product to protect it from freight and handling damage. Get your products to your customers in pristine condition with maximum protection. These orbitals are designed for individual products, small bundles, or boxes. If you're looking to fully automate this process, check out our automatic versions of these units on pages 11-12.

COMMON OPTIONS



Short Products Bridge



Wheels with Brakes



Top Press



Table with Rollers



Vertical Rollers

Product to Wrap Specifications	OWM-SA-50	OWM-SA-90
Maximum / Minimum Length	No limit / 10" 6" w/ option	No limit / 14" 10" w/ option
Max Width and Height Minimum	See graphic Page 2 2"W x 2"H	See graphic Page 2 8"W x 8"H
Machine Specifications		
Power Requirement	110V	110V
Air Pressure Requirement	90 PSI	90 PSI
Air Consumption	0.8 gallons per cycle	0.8 gallons per cycle
Ring Rotation Speed	5 to 150 rpm	5 to 90 rpm
Machine Size	28"L x 41"W x 57"H	30"L x 56"W x 67"H
Film Specifications		
Width	4"	6"
Thickness	67 to 120 gauge	67 to 120 gauge
Core External/Internal	8" / 1.5"	8" / 1.5"

OWM-SA-125



SAFETY FOOTSWITCH

OWM-SA-160

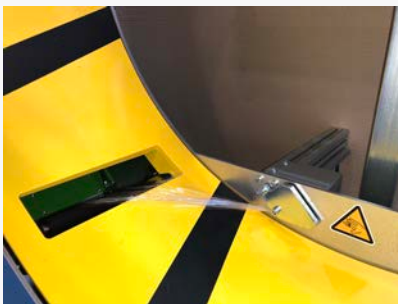


SAFETY FOOTSWITCH

HOW IT WORKS

Product is manually fed into the ring on rollers. The cycle is started with a foot pedal. The film is automatically cut and clamped at the end of the cycle.

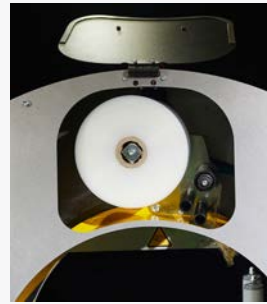
STANDARD FEATURES



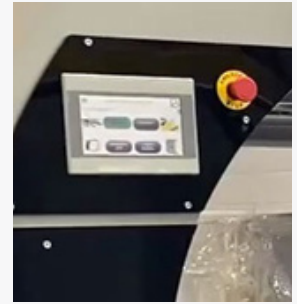
Double Automatic Film Cutter



Ring Protection



Adjustable Film Tension & Double Reel Systems



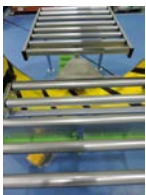
Touch Screen Parameters

COMMON APPLICATIONS

- Insulating panels
- Mattresses
- Boards
- Cabinets
- Windows
- Kayaks
- Doors
- Furniture
- Boxes
- Short pallets

The Handle It model 125 and 160 semi-automatic orbital wrappers are designed to improve efficiencies in wrapping your product to protect it from freight and handling damage. Get your products to your customers in pristine condition with maximum protection. These orbitals are designed for individual products, large bundles, or large boxes. If you're looking to fully automate this process, check out our automatic versions of these units on pages 13-14.

COMMON OPTIONS



Short Products Bridge



Manual Bubble Wrap Dispenser



Top Press



Table with Rollers



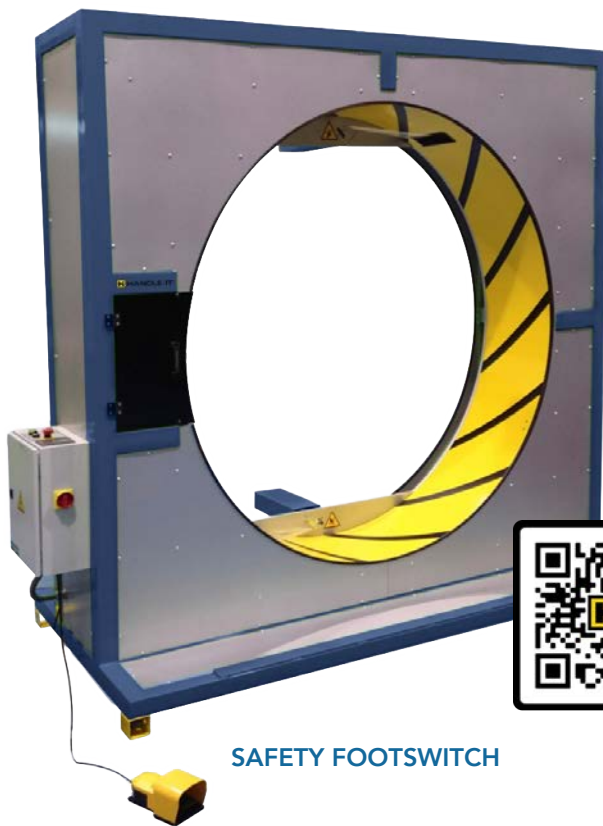
Slide Rollers "V" Shape

Product to Wrap Specifications	OWM-SA-125	OWM-SA-160
Maximum / Minimum Length	No limit / 24" 16" w/ option	No limit / 24" 16" w/ option
Max Width and Height	See graphic Page 2	See graphic Page 2
Minimum	12"W x 12"H	14"W x 14"H
Machine Specifications		
Power Requirement	110V	110V
Air Pressure Requirement	90 PSI	90 PSI
Air Consumption	6.4 gallons per cycle	6.4 gallons per cycle
Ring Rotation Speed	5 to 65 rpm	5 to 50 rpm
Machine Size	85"L x 77"W x 79"H	85"L x 87"W x 89"H
Film Specifications		
Width	10"	10"
Thickness	80 to 120 gauge	80 to 120 gauge
Core External/Internal	9" / 1.5"	9" / 1.5"

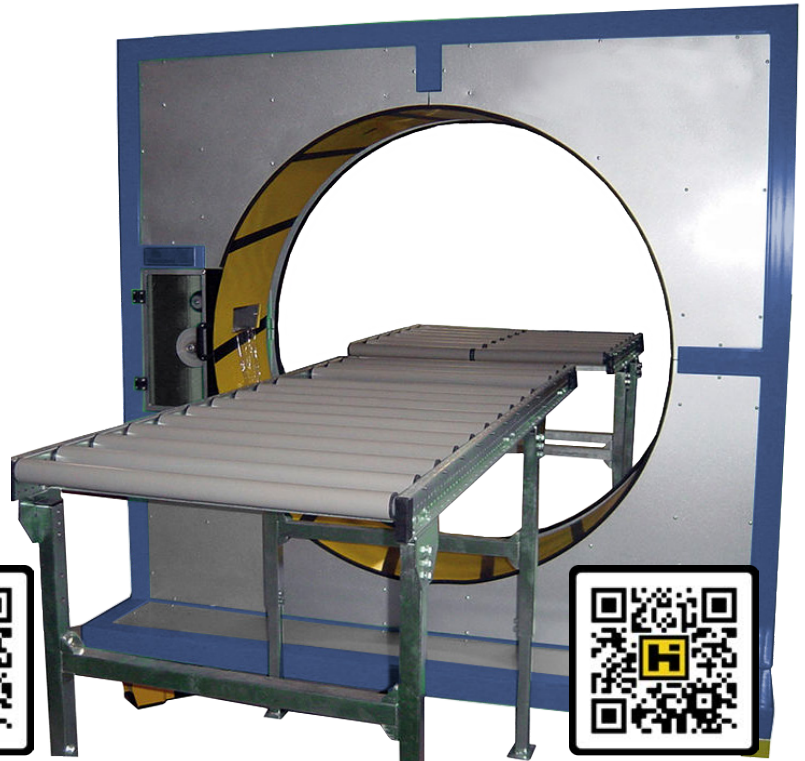
OWM-SA-200

OWM-SA-250

SHOWN WITH CONVEYOR OPTION



SAFETY FOOTSWITCH

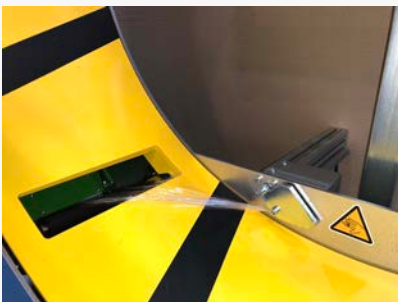


SAFETY FOOTSWITCH

HOW IT WORKS

Product is manually fed into the ring either on conveyor rollers or driven in by forklift. The cycle is started with foot switch or hand pendant. The film is automatically cut and clamped at the end of the cycle.

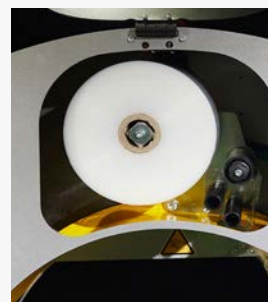
STANDARD FEATURES



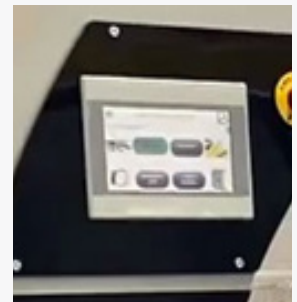
Double Automatic Film Cutter



Ring Protection



Adjustable Film Tension & Double Reel System



Touch Screen Parameters

COMMON APPLICATIONS

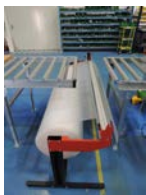
- Frames
- Palletized loads
- Drywall
- Metal panels
- Bulky products
- Large Boxes
- Doors
- Furniture

The Handle It model 200 and 250 semi-automatic orbital wrappers are designed to improve efficiencies in wrapping your product to protect it from freight and handling damage. Get your products to your customers in pristine condition with maximum protection. These orbitals are designed for large individual products, large bundles, or pallets of material. If you're looking to fully automate this process, check out our automatic versions of these units on pages 15-16.

COMMON OPTIONS



Short Products Bridge



Manual Bubble Wrap Dispenser



Top Press



Table with Rollers



Slide Rollers "V" Shape

Product to Wrap Specifications	OWM-SA-200	OWM-SA-250
Maximum / Minimum Length	No limit / 24" 16" w/ option	No limit / 24" 16" w/ option
Max Width and Height	See graphic Page 2	See graphic Page 2
Minimum	16"W x 16"H	24"W x 24"H
Machine Specifications		
Power Requirement	110V	110V
Air Pressure Requirement	90 PSI	90 PSI
Air Consumption	6.4 gallons per cycle	6.4 gallons per cycle
Ring Rotation Speed	5 to 55 rpm	5 to 45 rpm
Machine Size	52"L x 102"W x 103"H	52"L x 142"W x 131"H
Film Specifications		
Width	10"	10"
Thickness	90 to 140 gauge	90 to 140 gauge
Core External/Internal	9" / 1.5"	9" / 1.5"

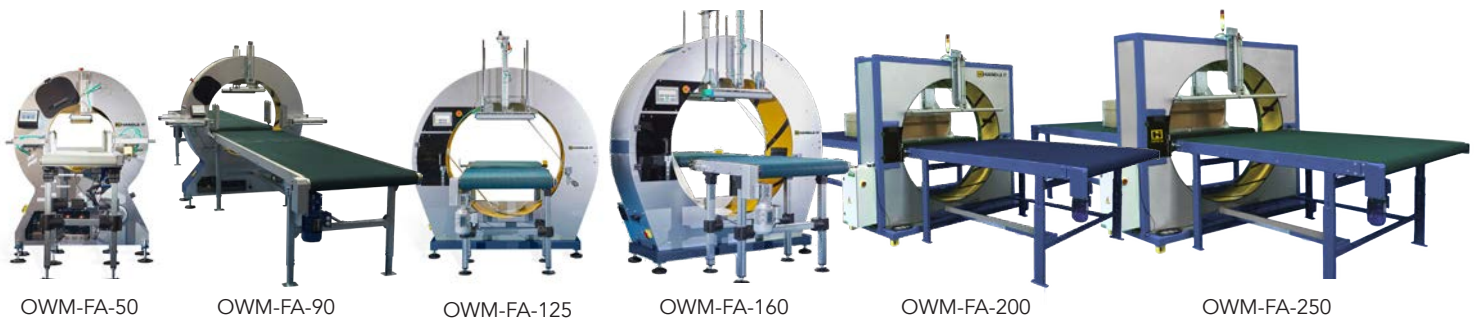
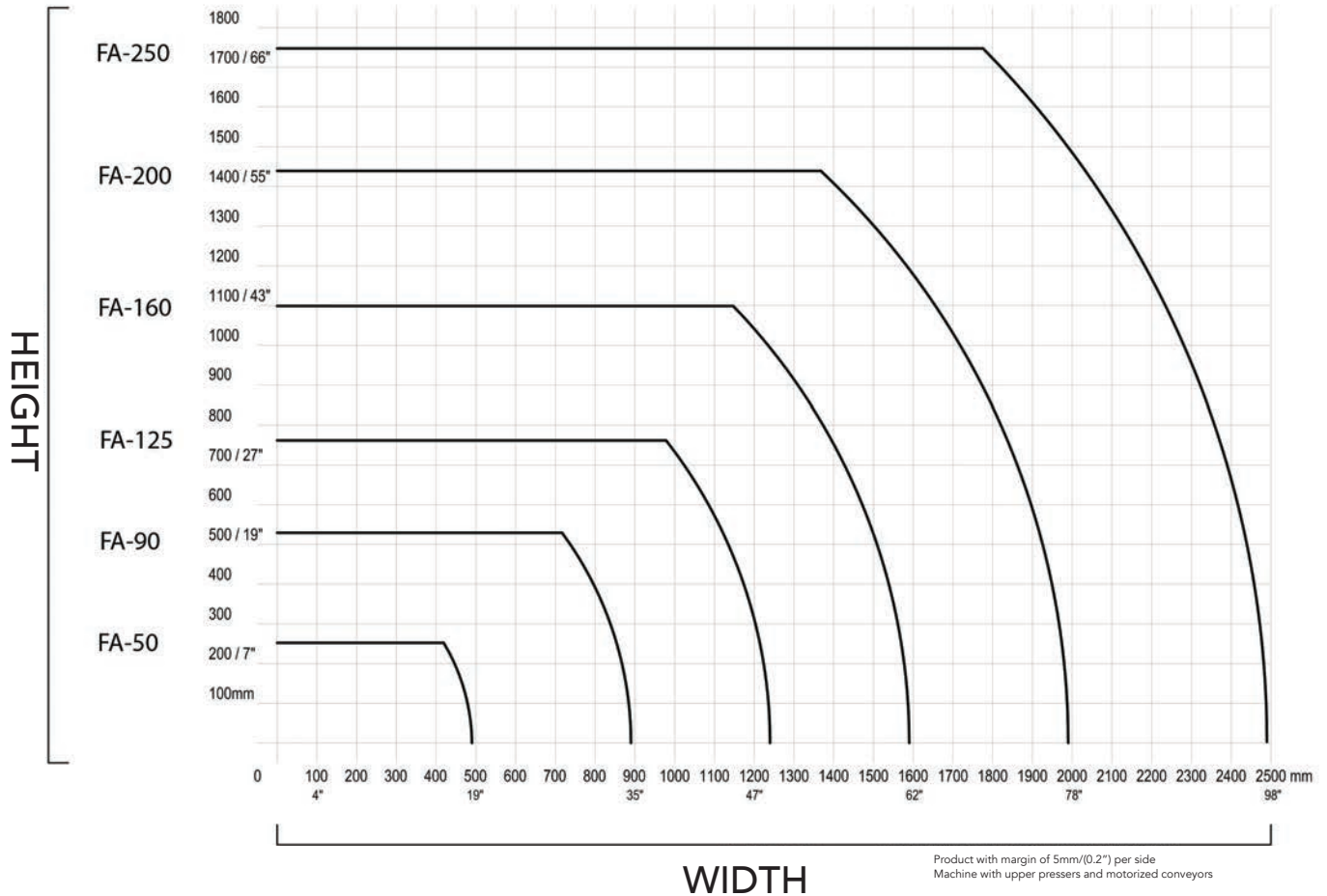
AUTOMATIC BUBBLE WRAP DISPENSER



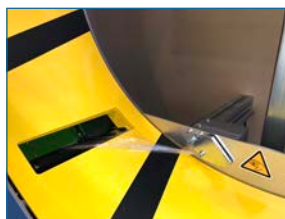
The automatic bubble wrap dispenser is a common option added to our automatic orbital wrappers model 125, 160, 200, and 250. It can also be used to dispense foam sheets and polyethylene sheets. Adding an automatic bubble wrap dispenser allows for full coverage of the product. It is applied from the front to back of the product then the product flows through to the orbital wrapper which applies the film, securing the bubble wrap to the product. For ultimate protection of sensitive products, ask about this option.



AUTOMATIC ORBITAL WRAPPERS



2-reel system which doubles the speed of your wrap.

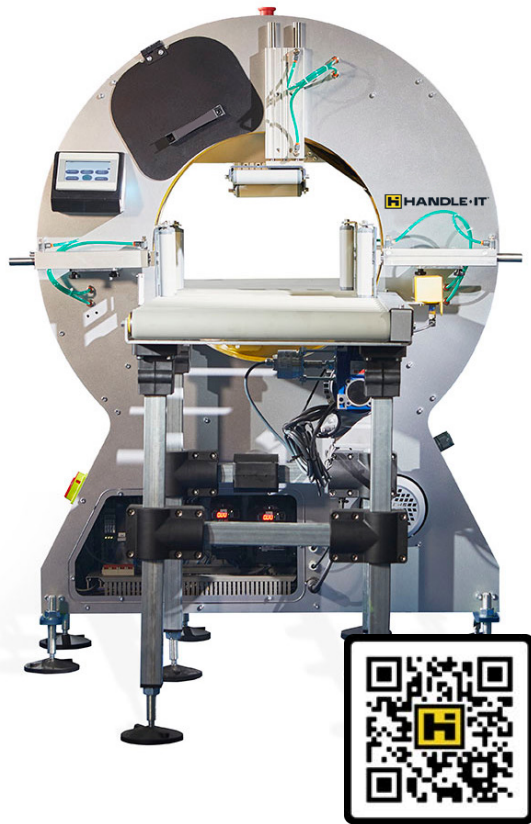


Auto cut feature with non-exposed blade. Both efficient and safe.



Covered inner ring for ultimate safety.

OWM-FA-50



OWM-FA-90



HOW IT WORKS

Product gets automatically fed by conveyors. Presser bars hold the product in place, as it feeds through the wrapping ring. The entire cycle is managed by PLC.

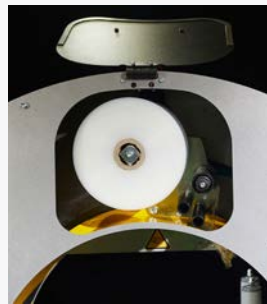
STANDARD FEATURES



Ring and Cutting Protection



Ring Protection



Reel Holder



Control Panel



Variable Ring Speed

COMMON APPLICATIONS

- Aluminum profiles
- Blinds
- Wood moldings
- Flooring
- Pipe
- Furniture kits
- Doors
- Shelves
- Fabric rollers
- Boxes
- Drawers

The Handle It model 50 and 90 automatic orbital wrappers are designed to improve efficiencies in wrapping your product to protect it from freight and handling damage. Get your products to your customers in pristine condition with maximum protection. These orbitals are designed for individual products, small bundles, or boxes. The automatic system allows for an even more streamlined process and is ideal for high throughputs of product.

COMMON OPTIONS



Top Presses



Side Rollers



End of Reel Warning



Roller Conveyors



Short Products Bridge

Product to Wrap Specifications	OWM-FA-50	OWM-FA-90
Maximum / Minimum Length	No limit / 10" 6" w/ option	No limit / 14" 10" w/ option
Max Width and Height	See graphic Page 10	See graphic Page 10
Minimum	2"W x 2"H	8"W x 8"H
Machine Specifications		
Power Requirement	110V	110V
Air Pressure Requirement	90 PSI	90 PSI
Air Consumption	1.6 gallons per cycle	3.2 gallons per cycle
Ring Rotation Speed	5 to 180 rpm	5 to 100 rpm
Machine Size	28"L x 41"W x 57"H	30"L x 56"W x 67"H
Film Specifications		
Width	4"	6"
Thickness	67 to 120 gauge	67 to 120 gauge
Core External/Internal	8" / 1.5"	8" / 1.5"

OWM-FA-125

SHOWN WITH TOP PRESSER
AND POWERED BELT CONVEYOR



OWM-FA-160

SHOWN WITH TOP PRESSER
AND POWERED BELT CONVEYOR



HOW IT WORKS

Product gets automatically fed by conveyors. Presser bars hold the product in place, as it feeds through the wrapping ring. The entire cycle is managed by PLC.

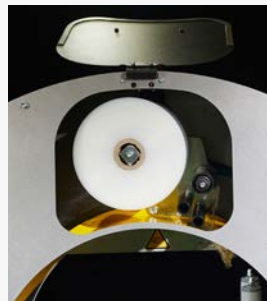
STANDARD FEATURES



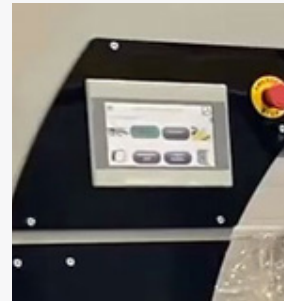
Ring and Cutting Protection



Ring Protection



Reel Holder



Control Panel



Variable Ring Speed

COMMON APPLICATIONS

- Kayaks
- Doors
- Furniture
- Boxes
- Short pallets

The Handle It model 125 and 160 automatic orbital wrappers are designed to improve efficiencies in wrapping your product to protect it from freight and handling damage. Get your products to your customers in pristine condition with maximum protection. These orbitals are designed for individual products, large bundles, or large boxes. The automatic system allows for an even more streamlined process and is ideal for high throughputs of product.

COMMON OPTIONS



Top Presses



Short Products Bridge



End of Reel Warning



Driven Rollers Conveyor



Bubble Wrap Auto-Dispenser



Auto-Blocks Dispenser



Safety Fences

Product to Wrap Specifications	OWM-FA-125	OWM-FA-160
Maximum / Minimum Length	No limit / 24" 16" w/ option	No limit / 24" 16" w/ option
Max Width and Height Minimum	See graphic Page 10 12"W x 12"H	See graphic Page 10 14"W x 14"H
Machine Specifications		
Power Requirement	480 V / 3 Phase	480 V / 3 Phase
Air Pressure Requirement	90 PSI	90 PSI
Air Consumption	10 gallons per cycle	12 gallons per cycle
Ring Rotation Speed	5 to 80 rpm	5 to 60 rpm
Machine Size	85"L x 77"W x 79"H	85"L x 87"W x 89"H
Film Specifications		
Width	10"	10"
Thickness	80 to 120 gauge	80 to 120 gauge
Core External/Internal	9" / 1.5"	9" / 1.5"

OWM-FA-200

SHOWN WITH TOP PRESSER
AND POWERED BELT CONVEYOR

OWM-FA-250

SHOWN WITH TOP PRESSER
AND POWERED BELT CONVEYOR



HOW IT WORKS

Product gets automatically fed by conveyors. Presser bars hold the product in place, as it feeds through the wrapping ring. The entire cycle is managed by PLC.

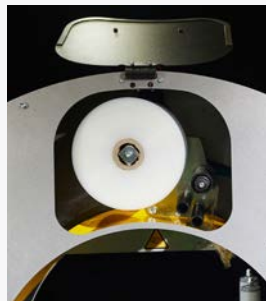
STANDARD FEATURES



Ring and Cutting
Protection



Ring Protection



Reel Holder



Control Panel



Variable Ring
Speed

COMMON APPLICATIONS

- Frames
- Palletized loads
- Drywall
- Metal panels
- Bulky products
- Large boxes
- Doors
- Furniture

The Handle It model 200 and 250 automatic orbital wrappers are designed to improve efficiencies in wrapping your product to protect it from freight and handling damage. Get your products to your customers in pristine condition with maximum protection. These orbitals are designed for large individual products, large bundles, or pallets of material. The automatic system allows for an even more streamlined process and is ideal for high throughputs of product.

COMMON OPTIONS



Top Presses



Short Products Bridge



End of Reel Warning



Driven Rollers Conveyor



Bubble Wrap Auto-Dispenser



Auto-Blocks Dispenser



Safety Fences

Product to Wrap Specifications	OWM-FA-200	OWM-FA-250
Maximum / Minimum Length	No limit / 24" 16" w/ option	No limit / 24" 16" w/ option
Max Width and Height Minimum	See graphic Page 10 16"W x 16"H	See graphic Page 10 24"W x 24"H
Machine Specifications		
Power Requirement	480 V / 3 Phase	480 V / 3 Phase
Air Pressure Requirement	90 PSI	90 PSI
Air Consumption	12 gallons per cycle	12 gallons per cycle
Ring Rotation Speed	5 to 55 rpm	5 to 45 rpm
Machine Size	102"L x 115"W x 103"H	52"L x 142"W x 131"H
Film Specifications		
Width	10"	10"
Thickness	90 to 140 gauge	90 to 140 gauge
Core External/Internal	9" / 1.5"	9" / 1.5"

C-STYLE ORBITAL WRAPPERS

OWM-SA-50C

SEMI-AUTOMATIC STANDARD



OWM-FA-90C

DRIVEN ROLLERS TABLE STANDARD



HOW IT WORKS

Product is either manually rotated (SA type) or automatically rotated (FA type) through the wrapping ring. The cycle is started with a foot switch. The film is automatically cut and clamped at the end of the cycle.

STANDARD FEATURES



Double Film Reel
Dispenser Head



Ring Protection



Adjustable Ring
Speed



Adjustable Stretch
Film Tension

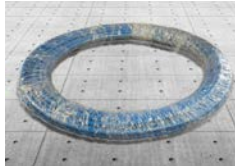
COMMON APPLICATIONS

- Tires
- Hoses
- Window frames
- Rolls of wire
- Rings

BEFORE & AFTER



Before



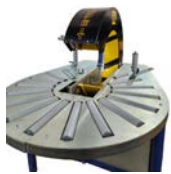
After

The Handle It model 50C and 90C C-style orbital wrappers are designed to improve efficiencies in wrapping your product to protect it from freight and handling damage. This unique orbital wrapper is made specifically for round or rectangular products that are hollow on the inside. Get your products to your customers in pristine condition with maximum protection.

COMMON OPTIONS



Lateral Guides



Driven Rollers Table



Multidirectional Balls Table



Wheels with Brake

MODEL 50C

Product to Wrap Specifications	
Minimum Inner \varnothing	11.4"
Minimum/Maximum Outer \varnothing	14.8" / 37.4"
Minimum Inner \square	9.7" x 9.7"
Maximum Outer \square	13.6" x 13.6"
Maximum Thickness	8.9"
Minimum/Maximum Weight	11/55 lbs
Machine Specifications	
Power Requirements	110V
Air Pressure Requirements	90 psi
Air Consumption	1.6 Gallons Per Cycle
Ring Rotation Speed	5 to 50 rpm
Machine Size	38" L x 49"W x 53"H
Film Specifications	
Width	4"
Thickness	67 to 120 gauge
Core External/Internal	4.7" / 1.5"

MODEL 90C

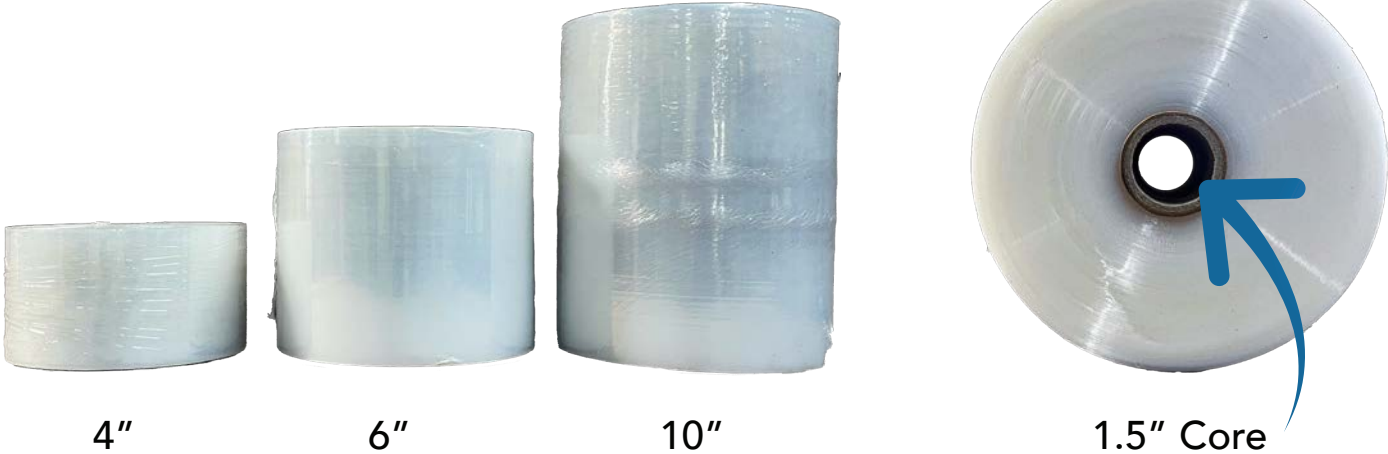
Product to Wrap Specifications	
Minimum/Maximum Inner \varnothing	15.8" / 58.7"
Minimum/Maximum Outer \varnothing	25.6" / 70.4"
Maximum/Maximum Thickness	4" / 16"
Minimum/Maximum Weight	22 / 165 lbs
Machine Specifications	
Power Requirements	110V
Air Pressure Requirements	90 psi
Air Consumption	1.9 Gallons Per Cycle
Ring Rotation Speed	5 to 30 rpm
Machine Size	81" L x 67"W x 67"H
Film Specifications	
Width	4"
Thickness	67 to 120 gauge
Core External/Internal	4.7" / 1.5"

MACHINE GRADE STRETCH WRAP FILM

Handle It offers premium machine grade film for all orbital wrappers.

Item Number	WIDTH	LENGTH	GAUGE	ROLL THICKNESS	CORE SIZE
OWMF-10-90-42	10"	4,200'	90	9"	1.5"
OWMF-6-90-42	6"	4,200'	90	9"	1.5"
OWMF-4-90-42	4"	4,200'	90	8"	1.5"
OWMFC-4-90-14	4"	1,400'	90	4.5"	1.5"

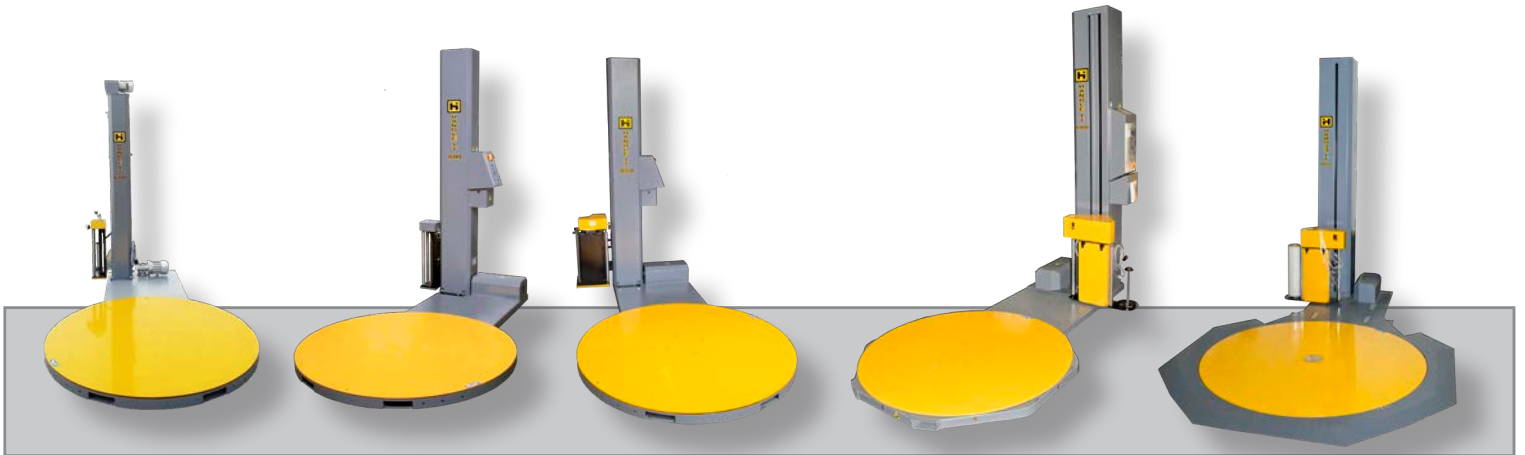
****67, 80, 100, 110, and 120 gauge available upon request. Subject to minimum purchases and lead times. ****



OTHER OFFERINGS

STRETCH WRAP MACHINES

Handle It, Inc.® also carries a line of stretch wrap machines. See below for a broad overview. Please contact us or visit our website for more information on these products.



SWM-SA-0600

SWM-SA-0800

SWM-SA-0850PS

SWM-SA-1100

SWM-SA-1200UL

IMPACT PROTECTION

Handle It, Inc.® also carries a variety of impact protection items for your warehouse needs. Everything from guard rail, post protectors, rack protectors and more to help protect buildings, pallet rack, machinery, product and personnel.





Sales Policies

Handle-It, Inc. prices are subject to change without notice. Handle-It, Inc. also reserves the right to alter product specifications, designs and shipping weight without notice. Customer service staff is available to provide written quotations for all products upon request.

Credit Policy

Standard terms of payment are net 30 days from date of invoice with approved credit. New distributors are required to prepay their first order prior to shipment. Handle-It, Inc. will not release any orders to distributors who have outstanding balances over 60 days from the invoice date. Handle-It, Inc. reserves the right to charge a 1.5% per month fee on outstanding balances over 30 days from the invoice date.

*Equipment purchases may be subject to a non-refundable deposit up to 50% at time of order; at the discretion of Handle-It, Inc.

*Steel product orders greater than \$20,000, or custom-designed product, require a 15% non-refundable deposit at time of order. The balance is billed at net 30 days.

Shipping Policy

All products are shipped FOB Factory; WI; CA; FL; or TX. Freight charges will be billed as specified on the purchase order. Parts weighing 70 lbs. or less will ship via UPS Ground, pre-paid & add, unless otherwise requested. Orders greater than 70 lbs. will be shipped common carrier. Published shipping weights may fluctuate due to options and/or packing material. Handle-It, Inc. reserves the right to add a handling charge to all orders. Handle-It, Inc. is not responsible for loss or damage in transit. It is the responsibility of the receiver (consignee) to inspect & document any damage at delivery. Handle-It, Inc. will assist the consignee whenever possible in filing freight claims.

Order Change Policy

If a purchase order for unshipped, standard or modified product is changed within seven calendar days after the receipt of the purchase order, there will be no charge. However, if a change is required for an unshipped unit from the eighth calendar day following the receipt of the purchase order, a surcharge will be assessed. In the event that the material unique to the purchase order has been purchased or manufactured, regardless of the time frame, and a change is required that eliminates the need for the purchased or manufactured material, the cost of the material as well as a surcharge will be added to the purchase order. All cancellations of purchase orders may be subject to a cancellation fee based on the stage of production. If a cancellation is received on the day of shipment, the Handle-It, Inc. restocking fee will apply. Cancellation of custom products will result in forfeiture of deposit plus any additional applicable fees.

Restocking Policy

The goal of Handle-It, Inc. is for the customer to be satisfied with their order. Merchandise may be returned, but is subject to a minimum 20% restocking fee. ***Custom items are NOT returnable.** Before returning any products, please contact the customer service staff at Handle-It, Inc. for instructions.

Customer service will provide an RMA number for any goods to be returned.

Limited Warranty Policy

Handle-It, Inc. provides a 3 year warranty from delivery date to be free from defects in materials and workmanship as described below. This warranty covers all of Handle-It's products (excluding SWM-MR-3000, which is a 2 year warranty) and assumes normal PM service will be performed by the user as outlined in the owner's manual. This warranty also assumes frequency of use of this product will not exceed the parameters outlined in the owner's manual.

During the warranty period, defects in material or workmanship may be repaired or replaced at the discretion of Handle-It, Inc. Rollers are not warranted against physical damage, corrosion, abuse or negligence. Wear parts such as belts, fuses, light bulbs, circuit breakers, brakes, motor brushes, slip ring brushes, etc. are excluded from this warranty.

Proof of purchase is required for warranty. The charge for shipping the defective components is the responsibility of the buyer; the shipment must be accompanied by an RMA number. The shipping charge to return the component to the buyer is the responsibility of Handle-It, Inc. This limited warranty does not cover labor expenses for removal or reinstallation of components.

This limited warranty shall not cover, among other things, damages resulting from foreign matter or water, or failure to follow operating instructions. The limited warranty is not valid for damage resulting from negligence, accident, unreasonable use, abuse or misuse, exceeding rating plate capacities or altering the product without Handle-It, Inc.'s written authorization.

Handle-It, Inc. makes no representation that this product complies with local, state, or federal safety/product standards or codes. Should this product fail to comply in any way with those codes, it shall not be considered a defect of materials or workmanship. Handle It, Inc. shall not be held liable for any damages resulting from noncompliance. It is the distributor's responsibility to exercise this limited warranty. This limited warranty is provided to the original purchaser (defined as the original end user) and is not transferable.

Exceptions: motors and gearboxes on all models carry a standard one (1) year limited manufacturers warranty.

Damage in transportation: Damage in transport is the responsibility of the carrier and is not covered under this warranty.


This constitutes the complete and final statement involving Handle-It, Inc. and the company's limited warranty obligations for Handle-It® brand products.

©2024 Handle-It, Inc. All rights reserved.

ORBITAL WRAPPERS CATALOG



 **HANDLE-IT**[®]

 800.236.1080

 414.453.9975

handleitinc.com

DISTRIBUTED BY

Handle It, Inc.
12247 W. Fairview Ave.
Milwaukee, WI 53226

©2023 HANDLE IT, INC. ALL RIGHTS RESERVED.