

mars AIR CURTAINS



**FROM PASS-THROUGH
WINDOWS**



TO DOCK DOORS



**TO ENTRY
DOORS**

MARS MANUFACTURES PRODUCTS TO MEET YOUR NEEDS

800-421-1266



www.marsair.com

HOW AIR CURTAINS WORK



AND THE BENEFITS THEY PROVIDE

Repel

Dirt, Dust, Debris, and
Flying Insects

Enhance

Indoor Air Quality &
Customer Experience

Reduce

Building Heating &
Cooling Costs

Improve

Customer, Employee,
& Product Safety

Decrease

Product Loss

Sanitize

with UVC, HEPA Filtration
& Ionization

RECEIVING DOORS, INTERIOR OPENINGS AND PATIO DOORS



Kitchen Receiving Door

MOUNTING HEIGHTS

ANSI/NSF 37 APPROVED MODELS

- **N2** – EMPLOYEE ENTRANCES (UP TO 7')
- **NH2** – SERVICE ENTRANCES (UP TO 7')

NON-NSF SERIES

- **STD2** – INTERIOR/EXTERNAL OPENINGS (8'-12')
- **HV2** – PATIO/RECEIVING DOORS (12'-14')

BENEFITS

- REPEL DIRT, DUST, DEBRIS, & FLYING INSECTS
- TEMPERATURE AND HUMIDITY CONTROL
- ENHANCED INDOOR AIR QUALITY & CUSTOMER EXPERIENCE



Interior Openings



Patio Dining Areas

HEAT OPTIONS AVAILABLE

- ELECTRIC
- STEAM
- HOT WATER
- GAS

*NOTE: HEAT OPTIONS ARE NOT AVAILABLE ON ANSI/NSF 37 APPROVED MODELS

CUSTOMER ENTRANCES



Convenience Store
Entrance

MOUNTING HEIGHTS

ANSI/NSF 37 APPROVED MODELS

- **LPN2** – RESTAURANT ENTRANCES (UP TO 7')
- **N2** – FOOD HANDLING FACILITIES (UP TO 7')

NON-NSF SERIES

- **LPV2** – RETAIL ENTRANCES (UP TO 8')
- **STD2** – CUSTOMER ENTRANCES (8'-12')

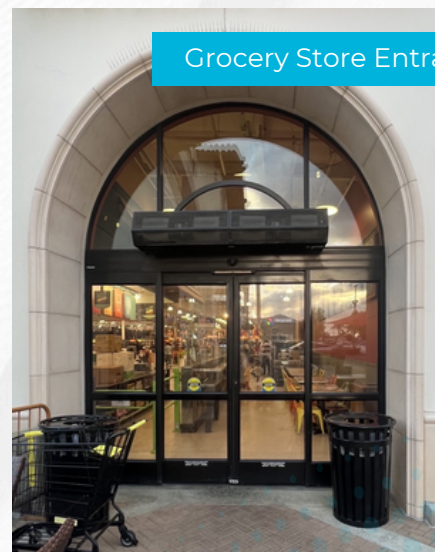
BENEFITS

REPEL DIRT, DUST, DEBRIS, & FLYING INSECTS • TEMPERATURE AND HUMIDITY CONTROL • ENHANCED INDOOR AIR QUALITY & CUSTOMER EXPERIENCE

HEAT OPTIONS AVAILABLE

- ELECTRIC
- STEAM
- HOT WATER

*NOTE: HEAT OPTIONS ARE NOT AVAILABLE ON ANSI/NSF 37 APPROVED MODELS



Grocery Store Entrance

ARCHITECTURAL CUSTOMER ENTRANCES

MOUNTING HEIGHTS

- **QP** MODELS – SURFACE MOUNTED (UP TO 12’)
- **PH** MODELS – RECESSED (UP TO 16’)

Hospital Entrance



BENEFITS

REPEL DIRT, DUST, DEBRIS, & FLYING INSECTS • TEMPERATURE AND HUMIDITY CONTROL • ENHANCED INDOOR AIR QUALITY & CUSTOMER EXPERIENCE • REDUCED NOISE OUTPUT BY UP TO 25%

Office Building Entrance



HEAT OPTIONS AVAILABLE

- ELECTRIC
- STEAM (QP8 AND PH ONLY)
- HOT WATER (QP8 AND PH ONLY)

DOCK DOORS



Warehouse Shipping/Receiving
Doors

MOUNTING HEIGHTS

- **HV2** – COMMERCIAL DOORS (12'-14')
- **EP2** – LIGHT INDUSTRIAL (14'-16')
- **WMI/WMH** – HEAVY INDUSTRIAL (14'-20')
- **BD** – HEAVY DUTY INDUSTRIAL (14'-32')

BENEFITS

REPEL DIRT, DUST, DEBRIS, & FLYING INSECTS • TEMPERATURE AND HUMIDITY CONTROL • ENHANCED INDOOR AIR QUALITY & CUSTOMER EXPERIENCE

HEAT OPTIONS AVAILABLE

- ELECTRIC
- STEAM
- HOT WATER
- GAS



Manufacturing Shipping/Receiving
Door

COLD STORAGE

MOUNTING HEIGHTS

- **LPV2** – WALK-IN COOLER/FREEZERS (UP TO 10')
- **STD2** – COOLER/FREEZER ROOMS (8'-12')



Walk-In Cooler
Entrance



Cold Storage Freezer
Entrance

BENEFITS

ELIMINATES NEED FOR PLASTIC STRIP CURTAINS • TEMPERATURE AND HUMIDITY CONTROL • REDUCES PRODUCT AND PACKAGING LOSS DUE TO HIGH CONDENSATION

OPTIONS

- **ELECTRIC HEAT**
 - ELIMINATES ICE BUILD UP ON FABRIC DOORS
 - PREVENTS CONDENSATION, WATER AND ICE BUILD UP ON FLOORS
- **UVC GERMICIDAL LAMPS**
 - ENHANCES SANITATION INSIDE COLD STORAGE SPACE
 - INCREASES SHELF LIFE OF PERISHABLE FOOD BY UP TO 25%
 - CAN BE MOUNTED INSIDE OR OUTSIDE OF THE COOLER
 - MUST BE MOUNTED OUTSIDE OF THE FREEZER
 - CANNOT COMBINE ELECTRIC HEAT WITH UVC LAMPS

CLEAN AIR: WHEN AIR CURTAIN CLEAN IS NOT CLEAN ENOUGH

UVC/UVV GERMICIDAL LAMP (UP TO 10')



Food Bank Customer Entrance

PRIMARY APPLICATIONS

- CUSTOMER ENTRANCES
- PASS-THRU WINDOWS
- RECEIVING DOORS
- INTERIOR SPACE SEPARATION

BENEFITS

KILLS PATHOGENS AND MICROORGANISMS ON THE INTERIOR SURFACES OF THE AIR CURTAIN AND DESTROYS ODOR CAUSING COMPOUNDS



Dumpster

VHP (UP TO 8')



Hospital Foodservice
Receiving Door (VHP model)

HEPA FILTER (UP TO 8')

BENEFITS

HEPA FILTER

- **CAPTURES** AIRBORNE PARTICULATES AS SMALL AS 0.3 MICRON SUCH AS DIRT, DUST, SMOKE, SPORES AND ALLERGENS

VHP

- **CAPTURES, KILLS, AND NEUTRALIZES** AIRBORNE PARTICULATES USING UVC/UVV LAMPS, HEPA FILTERS, AND BIPOLAR IONIZERS