

BOSTONtec



Ergonomic Workstations



IMPROVING PRODUCTIVITY THROUGH
ERGONOMIC SOLUTIONS

Ergonomic Workstations for Your Applications

APPLICATIONS

What We Do



ASSEMBLY

Assembly operations in, e.g., the automotive or aerospace industries perform better with ergonomic workbenches.



PACKING & SHIPPING

Modular workstations optimize the productivity of your online fulfillment, packaging, or receiving operation.



CONVEYOR

Choose specific workbench solutions that seamlessly integrate with your conveyor system.



ESD WORKBENCHES

Manufacturing sensitive electronics requires specific ESD workbenches that prevent damage to components and finished products.



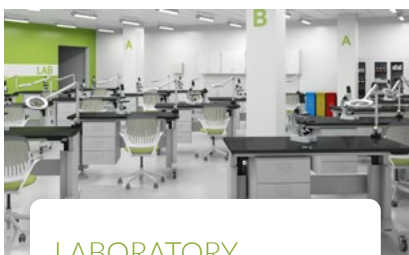
MEDICAL ASSEMBLY

Optimize medical equipment manufacturing and biotech processes with adjustable workbenches.



CLEANROOM

Control your cleanroom environment while optimizing your workflow with workstations designed for cleanrooms.



LABORATORY

Support your research team by offering a safe, productive, and comfortable work environment.



WIRE HARNESS ASSEMBLY

Electric height adjustability and manual tilt mechanisms help wire harness manufacturers increase productivity.

Have a niche application?
GO CUSTOM



See [page 6](#)

Table of Contents

03

General Info

07

Industrial

27

Accessories

58

Laboratory

| | | | | | | | |
|---------------------------|----|--------------------------------------|----|--|----|-------------------------------------|----|
| Applications | 2 | Industrial Overview | 7 | Accessories Overview | 27 | Laboratory Overview | 58 |
| Ergonomics At Work | 4 | Base Frames | | Uprights | 30 | Base Frames | |
| | | Electric Height Adjustable | 10 | | | Electric Height Adjustable | 60 |
| Custom Capabilities | 6 | Manual Height Adjustable | 12 | Shelves | 32 | Manual Height Adjustable | 60 |
| Color Program | 8 | Technical Workstations | 14 | Computer Accessories | 37 | Utility Tables | 61 |
| QUICKSHIP | 55 | Four-Post Workstations | 15 | Power & Lights | 41 | Work Surfaces | 63 |
| Feet And Caster | | Specialty Frames | 17 | Tool Support | 46 | Laboratory Accessories | 64 |
| Part Numbers | 71 | Feet and Casters | 20 | Storage | 50 | | |
| | | Work Surfaces | 22 | Other Popular Accessories | 52 | | |
| | | Specialty Work Surfaces | 24 | | | | |

Need it Fast?



QUICKSHIP | SHIPS IN 5-9 DAYS!
* business days

- Our most popular models and accessories
- FOB Midland, Michigan
- See [page 55](#) for more details



Look for **accessories** with the QuickShip logo.

Ergonomics At Work

BOSTONtec® was founded on a commitment to providing ergonomic workstations that improve the quality of life and increase productivity. This is achieved through a full line of height adjustable workstations and a wide range of accessories that lift, tilt, rotate and slide for optimal flexibility.

ANSI/HFS 100-1988

BOSTONtec follows ANSI/HFS 100-1988 guidelines to ensure proper leg clearance and adjustability for seated operators. Our workstations are designed to support ADA compliance.

By utilizing a range of adjustable components, workstations can be configured to meet the needs of 90 percent of operators or what ergonomists refer to as the 5th to 95th percentile.

PRODUCTIVITY

While automation has improved quality and productivity, many of the tasks that remain are repetitive and can be detrimental to the human body. Proper workstation solutions allow users to focus strength and energy on the tasks at hand while avoiding harmful effects.

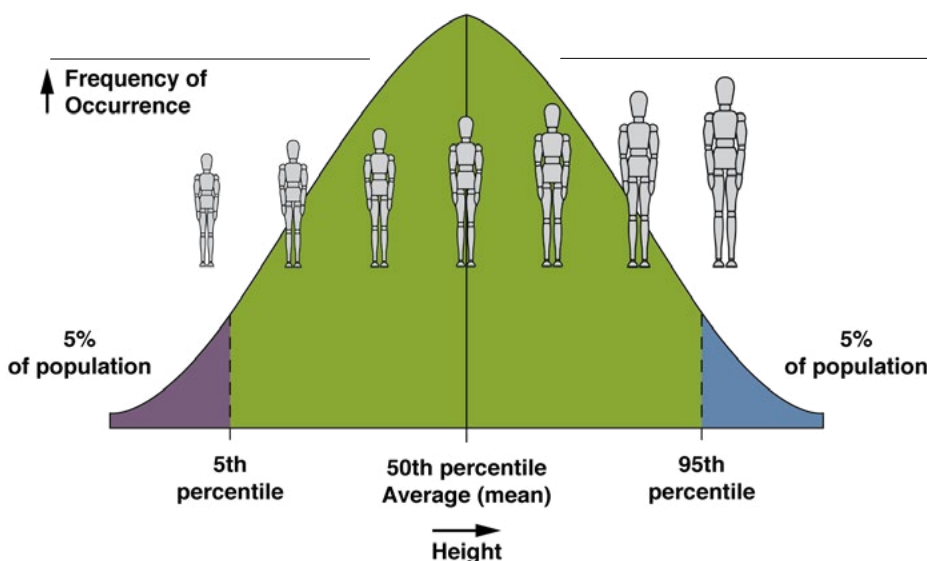
Properly designed workstations can increase productivity up to 25% over traditional fixed workstations by reducing unnecessary motion and subsequently increasing ROI.

MSDs

Musculoskeletal disorders (MSDs) are injuries and disorders of soft tissues such as muscles, tendons, ligaments, joints and the nervous system caused by repetitive motions. MSDs frequently involve the arms, wrists, hands and back.

MSDs account for 34% of all lost workday injuries and illnesses.

Each year employers report nearly 600,000 MSDs requiring time away from work. BOSTONtec ergonomic workstations and accessories assist in preventing strain with convenient workstation height adjustability and by placing tools and other items within reach of the operator.



Workforce diversity has made designing for the "average" worker obsolete. BOSTONtec workstations are designed for 5th to 95th percentile users.

For more information go to www.bostontec.com/ergonomics

ERGONOMIC SOURCES

www.bls.gov
www.cdc.gov
www.danmacleod.com
www.ergo-plus.com
www.ergonomics4schools.com
www.ergoweb.com
www.osha.com

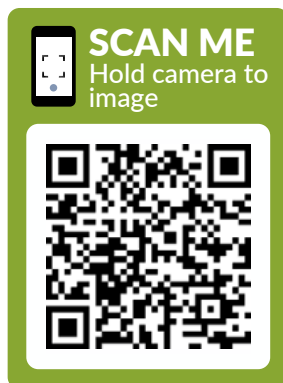
Comfort and productivity can be significantly improved if the ergonomic reach of the operator is considered when designing a workstation. BOSTONtec has a wide variety of accessories to help place needed items according to the recommended zone.

BOSTONtec Gets You In The Green Zone

Want to know more?

Visit bostontec.com to stay up-to-date on the latest ergonomic research. Or for reach zone related specifics, check out our comprehensive guide by scanning the QR code below.

Know Your Ergonomic Reach Zones



Zone 4

Storage for minimal use items

Zone 3

Less accessible for low use items

Zone 2

Comfortable access to medium use items

Zone 1

Easy access to high use items



Custom Capabilities

BOSTONtec is the industry leader in customized solutions. Our in-house capabilities take your ideas from concept to final product.



Design & Engineering

Working with the customer, our sales and engineering team identify and address the specific needs of the application. Our engineering team then creates a customized solution with renderings to assist in completion of the final design.

Manufacturing

Once designs are customer-approved, our engineering and production teams turn the drawings into customized workstations.

All aspects of manufacturing are performed in-house.

- Sheets of steel are laser cut, pressed and formed to exact specifications.
- Our welding department utilizes MIG, TIG and spot welding techniques.
- All steel components are finished on our powder coating line where they are high pressure washed, degreased, painted and baked at 400°.
- Finally, workstations head to assembly where frame and under work surface components are assembled pre-shipment.

Shipping

BOSTONtec workstations are carefully packaged and palletized for protection during shipment.

Additional Services

BOSTONtec also offers project management services and on-site installation.

INDUSTRIAL



ASSEMBLY
FULFILLMENT
MANUFACTURING
PACKING
SHIPPING
TESTING

All workstations are in gray epoxy powder coat finish unless noted otherwise. [Additional colors available.](#)

INDUSTRIAL

Build Your Own Workstation a Few Simple Steps!



STEP 5: Choose Your Color

Enhance your work environment, show your company pride, or color code work zones.

Color Program

- No charge, no minimum
- Standard lead time

**Denotes matte finish*

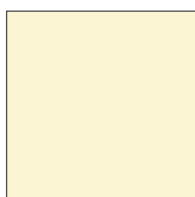
Custom Color Requests

Customer provides color swatch to match - **or** - RAL color choice

- Cost quoted as requested
- **Contact BOSTONtec for more information**



WHITE



CREAM



NEUTRAL



LIGHT GRAY



PLATINUM*



STEEL GRAY



BLACK*



BURGUNDY



FIRE ENGINE RED



CLEMENTINE ORANGE*



VIBRANT GREEN*



CLASSIC BLUE



NAVY

Speed Up Your Packaging & Shipping

Boost Efficiency and Comfort with Ergonomic Workstations

View More Details



SCAN ME
Hold camera to
image



Shipping Workstations & Benches for Fulfillment Operations

Packaging, shipping, receiving, and return activities can be performed faster and safer utilizing a properly designed shipping station.

KEY BENEFITS :

- Improve efficiency with quick and easy access to products and supplies
- Reduce repetitive stress injuries by fitting the workstation to the worker
- Cut workers' compensation cost
- Enhance employee satisfaction and morale
- Adapt to varying needs of an order fulfillment workflow with modular workstation design
- Experience virtually maintenance-free operation



INDUSTRIAL ELECTRIC HEIGHT ADJUSTABLE

NEW!

Dual-Synchronized Bases

Meet our new Medium-Duty Electric Height Adjustable Workstations, available in cantilevered (PBM) and center-justified (PBMC) models.

FEATURES:

- **Increased Load Capacity:**
Supports up to 600 lbs
- **SmartStop Collision Response Sensor:** Detects and responds to obstacles and work surface tilt.
- **Deeper Under-Work-Surface Clearance:** Allows easier integration of larger equipment.

1.5" of Adjustment/Sec



Collision Response



Accommodate Larger Items



Cantilevered Workstation

Best for multiple-operator, multiple-shift applications. Designed to support 5th to 95th percentile operators in a sitting or standing posture. Work surface height is easily adjustable at the touch of a button. A rear fixing frame provides stable support for single, double or triple bay uprights to hold bin rails, shelving, lighting and other accessories.

FEATURES:

- Cantilevered style leg ensures ample leg room
- Adjusts 28" to 44" without work surface
- Programmable switch provides digital height read-out and preset adjustability
- Includes dual-synchronized linear actuators with integral limit switches, 12 VDC low voltage control
- Supports [ADA compliance](#)
- Epoxy powder coat finish ([See available colors](#))
- [Feet or casters](#), [work surface](#), and [accessories](#) ordered separately
- See [page 55](#) for QuickShip availability



Load Capacity | MEDIUM DUTY
600 lbs*



Load Capacity | HEAVY DUTY
1,200 lbs*

BUILD YOUR PART NUMBER

Medium Duty: PBM

Heavy Duty: PBH

Available in depths: 24" | 30" | 36"

Available in widths: 30" | 36" | 48" | 60" | 72" | 84" | 96"

Additional sizes available upon request

*Based on evenly distributed loads

PBM3060

Prefix

Depth & Width
(based on work surface size)

BOSTONtec



CONTACT US | 989-496-3500



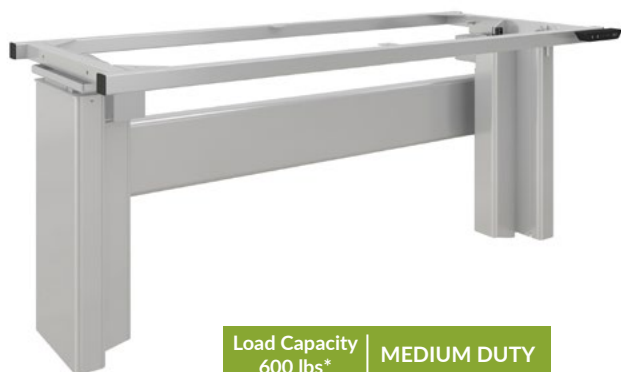
INDUSTRIAL ELECTRIC HEIGHT ADJUSTABLE

Center-Justified Workstation

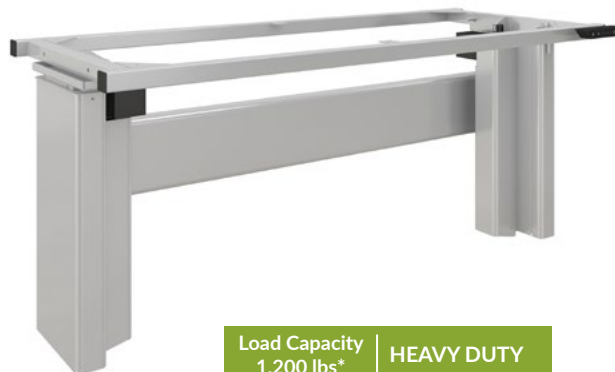
Created for applications requiring access from both sides of the table. Best for multiple-operator and multiple-shift applications. Designed to support 5th to 95th percentile operators in either a sitting or standing posture. Work surface height is easily adjustable at the touch of a button. This frame does not support uprights.

FEATURES:

- Center-justified style leg
- Adjusts 28" to 44" without work surface
- Programmable switch provides digital height read-out and preset adjustability
- Includes dual-synchronized linear actuators with integral limit switches, 12 VDC low voltage control
- Supports [ADA compliance](#)
- Gray epoxy powder coat finish ([Additional colors available](#))
- [Feet or casters](#), [work surface](#) and [accessories](#) ordered separately
- See [page 55](#) for QuickShip availability



Load Capacity | MEDIUM DUTY
600 lbs*



Load Capacity | HEAVY DUTY
1,200 lbs*

BUILD YOUR PART NUMBER

Medium Duty: PBMC

Heavy Duty: PBHC

Available in depths: 30" | 36" | 48"

Available in widths: 30" | 36" | 48" | 60" | 72" | 84" | 96"

Note: 48" depth tables have widths available starting at 60"

Additional sizes available upon request

*Based on evenly distributed loads

PBMC3060

Prefix

Depth & Width
(based on work surface size)

CONTACT US | 989-496-3500

BOSTONtec
☐ **B** ☐ ☐ ☐



INDUSTRIAL MANUAL HEIGHT ADJUSTABLE

Cantilevered Workstation

Best for single-shift, single-operator applications where frequent height changes are not required. Designed to support 5th to 95th percentile operators in either a sitting or standing posture. Height adjustments are made by removing the locking hand screws, repositioning the telescoping legs to the desired height and replacing the locking hand screw. Rear fixing frame provides stable support for single, double or triple bay uprights to hold bin rails, shelving, lighting and other accessories.

FEATURES:

- Cantilevered style leg ensures ample leg room
- Heavy Duty (AFH) adjusts 28" to 43" without work surface
- Supports [ADA compliance](#)
- Gray epoxy powder coat finish ([Additional colors available](#))
- [Feet or casters](#), [work surface](#) and [accessories](#) ordered separately
- See [page 55](#) for QuickShip availability



AFH shown with optional accessories



Load Capacity
1,200 lbs[†] | **HEAVY DUTY**

BUILD YOUR PART NUMBER

Heavy Duty: AFH

Available in depths: 24" | 30" | 36"

Available in widths: 30" | 36" | 48" | 60" | 72" | 84" | 96"

Additional sizes available upon request

[†]Based on evenly distributed loads

AFH2460

Prefix

Depth & Width
(based on work surface size)

BOSTONtec



CONTACT US | 989-496-3500



INDUSTRIAL MANUAL HEIGHT ADJUSTABLE

Center-Justified Workstation

Created for applications requiring access to both sides of the table. Best for single-shift, single-operator applications where frequent height changes are not required. Designed to support 5th to 95th percentile operator in either a sitting or standing posture. Height adjustments are made by removing the locking hand screws, repositioning the telescoping legs to the desired height and replacing the locking hand screw. This frame does not support uprights.

FEATURES:

- Center-justified style leg
- Heavy Duty (AFHC) adjusts 28" to 44", without work surface
- Supports [ADA compliance](#)
- Gray epoxy powder coat finish ([Additional colors available](#))
- [Feet or casters](#), [work surface](#) and [accessories](#) ordered separately



AFHC shown with laminate work surface and leveler feet



Load Capacity
1,200 lbs† | HEAVY DUTY

BUILD YOUR PART NUMBER

Heavy Duty: AFHC

Available in depths: 30" | 36" | 48"

Available in widths: 30" | 36" | 48" | 60" | 72" | 84" | 96"

Note: 48" depth tables have widths available starting at 60"

Additional sizes available upon request

†Based on evenly distributed loads

AFHC3060

Prefix

Depth & Width
(based on work surface size)

CONTACT US | 989-496-3500

BOSTONtec
☐ **B** ☐ ☐ ☐



INDUSTRIAL TECHNICAL WORKSTATION

Technical Workstation

This sturdy, Technical Workstation is available leg extensions.

FEATURES:

- Ships knocked down (KD)
- Gray epoxy powder coat finish
(Additional colors available)
- Work surface and accessories ordered separately

Technical Workstation with Leg Extensions and Leveler Glides (TCBE)

- 8" of height adjustment
- Includes leg extensions and leveler glides



Load Capacity
1,500 lbs* | TCBE



Load Capacity
1,500 lbs* | TCBE

Under Work Surface Shelving

- Provides additional storage for occasional use items
- Available in half or full depth
- All industrial work surface options

BUILD YOUR PART NUMBER

TCBE: Technical Workstation with Leg Extensions

Available in heights: 30" | 36"

Available in depths: 24" | 30" | 36"

Available in widths: 30" | 36" | 48" | 60" | 72" | 84" | 96"

Additional sizes available upon request
*Based on evenly distributed loads

TCBE303660

Prefix | Height | Depth | Width
(based on work surface size)

BOSTONtec



CONTACT US | 989-496-3500



INDUSTRIAL FOUR POST WORKSTATION

NEW!

INDUSTRIAL

FOUR POST

I

Four Post Workstation

Introducing our robust Four Post Workstation, enhanced with extendable leg feature. For added mobility choose our workstation model with swivel casters.

Seamlessly integrate with BOSTONtec's industrial uprights and accessories, unlocking a vast array of design potential.

FEATURES:

- Ships knocked down (KD)
- Gray epoxy powder coat finish
(Additional colors available)
- Work surface and accessories ordered separately
- All industrial work surface options available

Four Post Workstation with Leveler Glides (FPL)

- 8" of height adjustment
- Compatible with industrial [uprights](#)
- Includes leg extensions and [leveler glides](#)

Four Post Workstation with Casters (FPC)

- 8" of height adjustment
- Compatible with industrial [uprights](#)
- Includes leg extensions and four [universal locking casters](#)

Four Post Center Justified Workstation with Leveler Glides (FPL-2)

- 8" of height adjustment
- Includes leg extensions and [leveler glides](#)

Four Post Center Justified Workstation with Casters (FPC-2)

- 8" of height adjustment
- Includes leg extensions and four [universal locking casters](#)



Load Capacity
1,000 lbs* | FPC



Load Capacity
1,000 lbs* | FPL

Choice of Under Work Surface Shelving

- Steel Full-depth Shelf
- Steel Lower Corrugate Shelf



Load Capacity
1,000 lbs* | FPC-2

BUILD YOUR PART NUMBER

FPL: Four Post Workstation with Leveler Glides

FPC: Four Post Workstation with Casters

FPL-2: Four Post Center Justified Workstation with Leveler Glides

FPC-2: Four Post Center Justified Workstation with Casters

Available in heights: 30" | 36"

Available in depths: 24" | 30" | 36"

Available in widths: 30" | 36" | 48" | 60" | 72" | 84" | 96"

Additional sizes available upon request, *Based on evenly distributed loads

FPL303660-2

Prefix | Height | Depth | Width
(based on work surface size)

CONTACT US | 989-496-3500

BOSTONtec
B O S T O N

Save Space and Improve Productivity

Optimize Your Workflow with Tailored Conveyor Solutions

View More Details



SCAN ME
Hold camera to
image



Conveyor Workstations & Workbenches

Conveyor workstations can free the operators of a significant amount of manual material handling. The repetitive motions such as lifting, lowering, pushing, and pulling cost not only work time but also the health of the workers. Conveyor workbench tops are often equipped with tilt, rollers, and ball transfers, or freestanding frames are used to integrate seamlessly with your existing conveyor system. It minimizes physical exertions and non-value added motions.

KEY BENEFITS :

- Support lean processes by minimizing non-value added motions
- Prevent work-related musculoskeletal disorders associated with manual material handling
- Cut workers' compensation cost
- Optimize space utilization
- Improve productivity
- Enhance employee satisfaction and morale
- Economical and adaptable solution



INDUSTRIAL SPECIALTY FRAMES

Standing Workstation Frame

Cost-effective means of supporting a small work surface and accessories. Ideal in spaces where a full workstation is not needed. Frames may be used behind conveyors to provide easy access and support for tools or task items. Adding optional casters creates a mobile desk.



STANDING WORKSTATION FRAME FEATURES:

- Single bay frame 30"w x 69"h
- Double bay frame 60"w x 69"h
- Both frames accept 24"d x 30"w or 24"d x 36"w work surfaces
- Work surface and accessories adjust in one-inch increments
- Includes leveler feet, top and bottom support bars
- Gray epoxy powder coat finish
(Additional colors available)
- Casters, work surface and accessories ordered separately

| PART NO. | DESCRIPTION |
|-----------|---|
| SWF3069 | Single Bay Standing Frame, 30"w |
| SWF6069 | Double Bay Standing Frame, 60"w |
| SWFA24 | Work Surface Support Arms (Pair) |
| SWF3069C4 | Standing Frame with Casters (4-locking) |
| SWF6069C6 | Standing Frame with Casters (6-locking) |

Trolley

Offers additional mobile storage for shared materials or to refill work areas. The trolley uses two uprights to provide easy, open access to items.



TROLLEY FEATURES:

- Accepts most industrial accessories and articulating arms
- Accessories adjust in one-inch increments
- Gray epoxy powder coat finish
(Additional colors available)
- Includes 2-locking and 2-non-locking 4" casters and top and bottom cross bars
- Accessories ordered separately

| PART NO. | DESCRIPTION |
|----------|----------------------|
| TTF3073 | Trolley, 30"w x 73"h |

*Based on evenly distributed loads

CONTACT US | 989-496-3500

BOSTONtec
☐ **B** ☐ ☐ ☐

Adjust Your Work With Ease

Boosting Efficiency in Wire Assembly

Learn more!

CONTACT US | 989-496-3500



Wire Harness Board Workbench

Electric height adjustability and manual tilt mechanisms provide a more ergonomic work environment. The BOSTONtec wire harness board frame results from a three-year cooperative development project with major wire harness fabricators. The workbench allows the operator to quickly set a wire harness board appropriately and then change position without removing work in process.

KEY BENEFITS :

- Improves operator comfort thanks to electric height and tilt adjustability
- Reduces non-value added motions
- Decreases repetitive motion injuries
- Increases wiring accuracy
- Reduces cycle time



INDUSTRIAL SPECIALTY FRAMES

Wire Harness Board Frame

This workstation is the result of three years of cooperative development with several major wire harness fabricators. The electric height adjustable and manual tilt mechanisms provide a more ergonomic work environment increasing productivity. Frame allows operator to properly set a large wire harness board quickly, then change position without removing work in process.

Frame may be raised or lowered at the touch of a button so operator can work comfortably sitting or standing.

Deck adjusts easily from horizontal to vertical position as well as multiple tilting options. Horizontal setting provides operator access to the board from all sides.

FEATURES:

- Space-saving compact footprint, 36"d x 72"w
- Deck is 36"d x 72"w, expands to 48"d x 72"w
- Supports boards up to 48"d x 96"w
- Multiple frames can work together to support extra long boards
- 36" to 70" horizontal position height range*
- 11" to 46" vertical position height range*
- Manual tilt 0° to 90° in 10° stops
- Programmable switch provides digital height read-out and preset adjustability
- Self-contained linear actuator with integral limit switch, 12 VDC low voltage control
- Gray epoxy powder coat finish [\(Additional colors available\)](#)
- Casters and lag plates available



Load
Capacity
350 lbs†

PART NO.

DESCRIPTION

PHF3672 Wire Harness Board Frame, 36"d x 72"w,
Electric Lift, Manual Tilt



Load
Capacity
350 lbs†

PART NO.

DESCRIPTION

PHF3672C Wire Harness Board Frame, 36"d x 72"w,
Electric Lift, Manual Tilt, with (4) locking casters

* Minimum and maximum height increases by a measure of 4" with
caster option

† Based on evenly distributed loads

CONTACT US | 989-496-3500

BOSTONtec
□ **B** □ □ □ □



INDUSTRIAL FEET & CASTERS

See [chart](#) on page 71, for foot and caster ordering information.

| WORKSTATION TYPE | LEVELER FEET | UNIVERSAL LOCKING CASTER | MEDIUM DUTY ESD CASTER | UNIVERSAL LEVELING CASTER |
|------------------|--------------|--------------------------|------------------------|---------------------------|
| AFH | • | • | | • |
| AFHC | • | • | | • |
| PBM | • | • | • | • |
| PBMC | • | • | • | • |
| PBH | • | • | | • |
| PBHC | • | • | | • |



Leveler Feet

- Allow user to level workstation on uneven surfaces
- Leveler glides included



Drop Down Feet

- Unique drop down foot design
- Add casters without increasing starting height of the workstation
- Included with all casters



Lag Plates

- Compatible with leveler feet
- Plate has four $\frac{3}{8}$ " holes to bolt to floor (bolts not included)



Medium Duty ESD Casters

- All 4 locking casters
- Polyolefin core with conductive rubber tread
- 5" overall height; 4" wheel
- Non-marking



Universal Leveling Casters

- Nylon wheel; rubber leveling pad
- 4" overall height on caster; 4 $\frac{1}{2}$ " overall height on leveler
- 2 $\frac{1}{2}$ " wheel
- Non-marking



Universal Locking Casters

- All 4 locking casters
- Polyurethane on polyolefin wheel
- 5.12" overall height; 4" wheel
- Non-marking

Prevent Damages and Ensure Quality

Ergonomic Solutions for Increased Productivity and Employee Safety

View More Details



SCAN ME
Hold camera to
image



ESD Workbenches & Stations

BOSTONtec's ESD workbench is an integral part of an ESD protected area (EPA) to prevent ESD damages and costly consequences. It combines ESD safety with ergonomics to ensure product quality, employee well-being, and productivity improvement.

KEY BENEFITS :

- Prevent product defects and device failures due to damages of sensitive electronics components
- Safeguard company reputation and avoid substantial legal cost related to product quality issues
- Reduce reaching, bending, and twisting associated with electronics assembly and testing tasks
- Improve efficiency by reducing non-value added motions
- Enhance employee satisfaction and morale with ergonomically optimized work space
- Adapt to changes in workforces and work processes easily with modular design and setup



INDUSTRIAL WORK SURFACES

Premium Grade Laminate

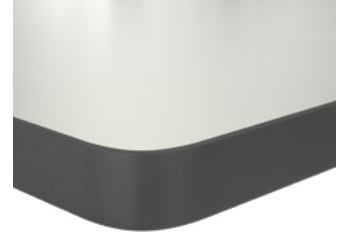
This highly durable work surface is constructed with a top layer of 1/8" thick laminate over 1 1/8" high density core board.

Standard Edge



All four sides are edged with an impact-resistant 3mm thick PVC edging in a complementary color. Finished with a 2mm radius. Brown backer. See [page 55](#) for QuickShip availability.

T-Mold



All four sides are edged with a resilient molded dark charcoal color bumper. Rounded corners are formed with a 1 1/4" radius. Brown Backer.



Cleanroom

A premium grade laminate work surface with sealed edges and a laminate underside for cleanroom environments. All four sides are edged with an impact-resistant 3mm thick PVC edging in a complementary color. Finished with a 2mm radius. (Typically used in class 100, 1000, and 10000.)

Electrostatic Discharge (ESD) Version

All surfaces above are also available in an Electrostatic Discharge (ESD) version utilizing a special laminate that reduces electric current transfer on the work surface. Flush ESD grounding bolt is included and swivet connectors are available for grounding.



Grounding Bolt (Swedge)
included



Swivet Connector
optional

BUILD YOUR PART NUMBER

WORK SURFACE PREFIX:

| | | | |
|------------------------|------|----------------------------|-------|
| 3 MM: | 3M | 3 MM ESD: | 3ME |
| T-Mold: | TM | T-Mold ESD: | TME |
| 3 MM Cleanroom: | 3M-2 | 3 MM ESD Cleanroom: | 3ME-2 |

3M2460

Prefix | Depth & Width

Standard color: Gray
Additional colors available

BOSTONtec



CONTACT US | 989-496-3500

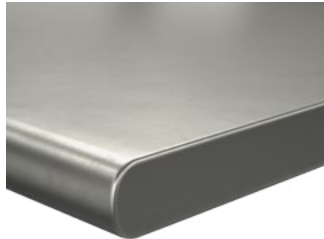


INDUSTRIAL WORK SURFACES

Additional Options

Different applications can require specific work surfaces. BOSTONtec offers the most popular options – as well as special requests.

Stainless Steel



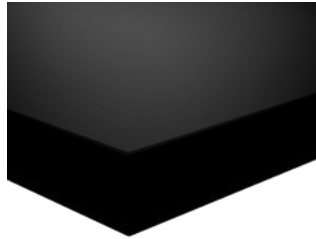
Durable and chemical-resistant, 1 1/2" stainless steel work surfaces are constructed of 304 grade, 14 gauge stainless steel formed over a sealed laminated core board. Work surface comes with a 2B random brushed finish and is non-reflecting.

Maple



Ideal for areas that must stand repeated wear and tear. Beautifully fabricated with 1 3/4" edge laminated hardwood maple. This surface provides maximum strength and durability and looks good doing it. Also available in a 180° rolled edge.

Phenolic Resin



Our lab-grade, 1-inch thick phenolic resin work surface is made of thermoset resin composite, ideal for medium-duty applications. It provides high resistance to chemicals, bacteria, corrosion, fungi, and moisture. It can withstand continuous heat exposure up to 350°F. The standard color is black with additional color options available upon request.

Didn't see what you need?
We've got you covered.

Contact your sales representative today
for additional work surface options

BUILD YOUR PART NUMBER

WORK SURFACE PREFIX:

Stainless Steel: SS | **Maple:** MS | **Phenolic Resin:** PR

MS2460

Prefix Depth & Width

CONTACT US | 989-496-3500

BOSTONtec
☐ **B** ☐ ☐ ☐



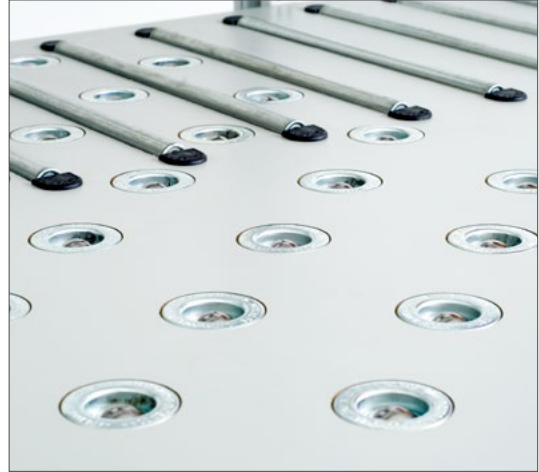
INDUSTRIAL SPECIALTY WORK SURFACES

Transfer & Rotation

Surface rollers and ball transfers are designed to simplify the moving of heavy loads.

Ball transfers are available in fixed or pneumatic retractable options. Each ball transfer is a self-contained unit capable of handling 10 - 30 lbs and allows the operator to move loads in multiple directions easily. When assembled in an appropriate pattern, they can support loads in excess of 1,000 lbs. Pneumatic ball transfers retract .065" below flange and may be controlled by either foot or hand switch.

A variety of surface roller and ball transfer patterns are available to accommodate differing tasks. Consult your sales representative for assistance in configuring the proper pattern for your application.



Compatible with all industrial workstations

CONTACT BOSTONtec FOR ORDERING INFORMATION



INDUSTRIAL SPECIALTY WORK SURFACES

Tilting Work Surfaces

Tilt tables improve user ergonomics and productivity by better positioning a task, reducing operator reach and promoting proper posture. Available with a full or split surface tilt in drafting or rotational style. Choice of manual or electric adjustability. Available in laminate and hardwood work surfaces.

Drafting Style Tilt

Used for applications in which the work surface pivots from its front edge, similar to a drafting table.

Rotational Tilt

Used for applications where the surface tilts around an axis placed back from the front edge of the surface. Unlike a standard drafting table tilt, the front of the surface will drop as the back rises. This method helps users gain easier access inside large, deep items.

Manual Tilt

Manual tilt surfaces provide a simple, cost-effective method for adjusting position of smaller surfaces for light duty applications. The manual tilt option provides a ratcheting latch in the back of the work surface that allows the surface to be lifted to the desired tilt up to 30° where the latch will lock into position.

Electric Tilt

Standard electric tilt up to 60° is available on any style tilting work surface.



Full Surface Electric Tilt



Split Surface Manual Tilt

CONTACT BOSTONtec FOR ORDERING INFORMATION



INDUSTRIAL SPECIALTY WORK SURFACES

Additional Specialty Surfaces

BOSTONtec offers customized work surface solutions to meet specific applications.

Work Surface Cutouts

Surface cutouts can be designed to incorporate drop-in scales, turntables, wiring grommets or other special uses.

All our surfaces can be modified to meet almost any requirement - laminate, stainless steel, hardwood maple, phenolic resin.

Consult your sales representative for assistance.



CONTACT BOSTONtec FOR ORDERING INFORMATION

ACCESSORIES

UPRIGHTS

SHELVES

COMPUTER ACCESSORIES

POWER & LIGHTS

TOOL SUPPORT

STORAGE

OTHER POPULAR ACCESSORIES



All accessories have a gray epoxy powder coat finish unless noted otherwise. [Additional colors available.](#)

ACCESSORIES

A wide variety for endless combinations!

30



.....Uprights

32



.....Shelves

37



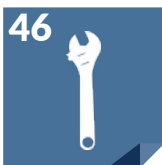
.....Computer
Accessories

41



.....Power
& Lights

46



.....Tool
Support

50



.....Storage

52



.....Other
Popular
Accessories



NEW!

Dual Monitor Arms

More screens, more possibilities! The new BOSTONtec Dual Monitor Arm enables mounting 2x the monitors in the same amount of upright space compared to a typical monitor arm. [See listing](#) on page 38, to learn more.

FEATURES:

- Steel and aluminum construction: Making it lightweight and durable
- Bracket or tabletop clamp mounting options: For maximum compatibility
- Black finish and trim: For a discrete appearance

Confidence for Sensitive Processes

Enhance Productivity with Ergonomic Solutions

View More Details



SCAN ME
Hold camera to
image



Cleanroom Workbenches and Tables

In cleanrooms, it is all about maximizing control of the environment. Workbenches and tables play an essential role in this equation.

KEY BENEFITS :

- Control your environment with easy-to-clean surfaces and materials
- Increase your productivity with a flexible modular design
- Support your lean initiatives by reducing non-value added motions
- Save cost, by reducing worker injuries
- Support employee engagement with workstation that fits their preferred height
- Reduce downtime thanks to virtually maintenance-free quality and components



ACCESSORIES UPRIGHTS



Uprights

- Uprights working in concert with proper accessories provide users with optimal ergonomic reach access and increased [productivity](#)
- Double-slot, double-sided design allows users to place or move accessories in 1" increments without tools
- Mount 33" or 42" above work surface with basic tools
- 1" x 1" channel design provides area to fish wires or air tubes
- Compatible with cantilevered workstation frames
- Include hardware and mounting brackets



Single Slotted Upright

CAPACITY: 65 lbs

- For use with single-mounted accessories such as the [flat panel display arm](#)



| PART NO. | DESCRIPTION | WEIGHT |
|----------|------------------------|--------|
| SBUP53 | Single Slotted Upright | 13 lbs |

Single Bay Slotted Uprights, 30" Spacing

CAPACITY: 250 lbs

- Accept all above-surface accessories
- Compatible with cantilevered workstations at least 30" wide
- Top cross brace provides added stability

| PART NO. | DESCRIPTION | WEIGHT |
|-----------|---|--------|
| SBUP53 | Single Bay Slotted Upright | 24 lbs |
| SBUP53-30 | Single Bay Slotted Uprights for 30"w workstations | 24 lbs |

BOSTONtec



CONTACT US | 989-496-3500



ACCESSORIES UPRIGHTS



Double Bay Slotted Uprights, 60" Spacing

CAPACITY: 375 lbs

- Accept all above-surface accessories
- Compatible with cantilevered workstations at least 60" wide
- Top cross brace provides added stability



| PART NO. | DESCRIPTION | WEIGHT |
|----------|-----------------------------|--------|
| DBUP53 | Double Bay Slotted Uprights | 38 lbs |



Triple Bay Slotted Uprights, 90" Spacing

CAPACITY: 375 lbs

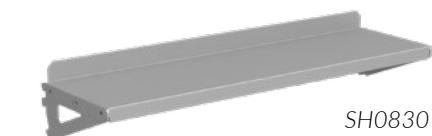
- Accept all above-surface accessories
- Compatible with 96" wide cantilevered workstations
- Top cross braces provide added stability



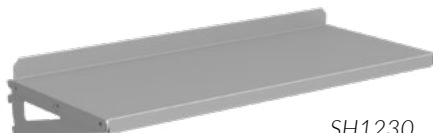
| PART NO. | DESCRIPTION | WEIGHT |
|----------|-----------------------------|--------|
| TBUP53 | Triple Bay Slotted Uprights | 48 lbs |



ACCESSORIES SHELVES



SH0830



SH1230



SH1530

Steel Shelf

CAPACITY SH0830: 75 lbs

CAPACITY SH1230 & SH1530: 100 lbs

- Allows for placement of items within the [reach zones](#)
- Place or move shelves on uprights without tools
- Shelf brackets allow for mounting flat or at a 15° angle and can extend shelf 2" away from upright
- Can be reversed to place lip on front or back of shelf
- Includes two mounting brackets
- Compatible with single, double and triple bay [uprights](#); [trolley](#) and [standing workstation](#) frames
- Accepts steel shelf divider DIV1215 for additional organization

| PART NO. | DESCRIPTION | WEIGHT |
|----------|-------------------|----------|
| SH0830 | 8"d x 30"w Shelf | 4.25 lbs |
| SH1230 | 12"d x 30"w Shelf | 7.25 lbs |
| SH1530 | 15"d x 30"w Shelf | 8.5 lbs |



Captured Shelf

CAPACITY CSH1230, CSH1260, CSH1530, CSH1560: 100 lbs

CAPACITY CSH1290, CSH1590: 200 lbs

- Allows for placement of items within the [reach zones](#)
- Place or move shelves on uprights without tools
- Has 8" tall side and back panels
- Includes two mounting brackets
- Compatible with single, double and triple bay [uprights](#); [trolley](#) and [standing workstation](#) frames
- Accepts steel shelf divider DIV1215 for additional organization

| PART NO. | DESCRIPTION | WEIGHT |
|----------|-------------------|--------|
| CSH1230 | 12"d X 30"w Shelf | 18 lbs |
| CSH1260 | 12"d X 60"w Shelf | 30 lbs |
| CSH1290 | 12"d X 90"w Shelf | 48 lbs |
| CSH1530 | 15"d X 30"w Shelf | 21 lbs |
| CSH1560 | 15"d X 60"w Shelf | 35 lbs |
| CSH1590 | 15"d X 90"w Shelf | 55 lbs |



ACCESSORIES SHELVES



Overhead Storage Cabinet

CAPACITY: 75 lbs

- Provides additional secure storage space for reference materials and other items
- Flip up door
- Includes key lock
- 16"h x 14 ³/₈"d x 30"w

| PART NO. | DESCRIPTION | WEIGHT |
|----------|-----------------|--------|
| SC1630 | Storage Cabinet | 35 lbs |

Adjustable Shelf with Tilt

CAPACITY: 150 lbs

- Tilting shelf reduces wrist strain when users repeatedly reach for objects
- Place or move shelf on uprights without tools
- Raised edges help hold items in place on incline
- Adjustable tilt, 0° to 25°
- Includes mounting brackets
- AS models compatible with single, double and triple bay [uprights](#); and [standing workstation](#) frames
- ATS models compatible with [trolley frames](#)
- Accepts adjustable shelf divider ASD18 or ASD24 for organization



| PART NO. | DESCRIPTION | WEIGHT |
|----------|-------------------------|--------|
| AS1828 | 18" x 28" Shelf | 11 lbs |
| AS2428 | 24" x 28" Shelf | 14 lbs |
| ATS1828 | 18" x 28" Trolley Shelf | 11 lbs |
| ATS2428 | 24" x 28" Trolley Shelf | 14 lbs |



Steel Shelf Divider

- Divides and holds items in place
- Mounts on standard SH1230 and SH1530 steel shelves and [under work surface shelving](#) systems
- Simple clip-on design can be secured with a screw
- Infinitely adjustable spacing
- 11 ³/₄"d x 7 ¹/₂"h

| PART NO. | DESCRIPTION | WEIGHT |
|----------|---------------------|--------|
| DIV1215 | Steel Shelf Divider | 2 lb |



ACCESSORIES SHELVES



Adjustable Shelf Divider

- Divides and holds items in place
- $\frac{3}{8}$ " diameter steel divider rod
- Infinitely adjustable spacing
- 18" fits AS1828 and ATS1828 shelves
- 24" fits AS2428 and ATS2428 shelves

| PART NO. | DESCRIPTION | WEIGHT |
|----------|--------------------------------------|--------|
| ASD18 | 8"h x 18"d Adjustable Shelf Divider | 1 lb |
| ASD24 | 12"h x 24"d Adjustable Shelf Divider | 1 lb |



Work Surface Riser

CAPACITY: 200 lbs

- Provides additional work surface space as needed
- Slotted upright supports (included) mount to [cantilevered](#) workstations and accept accessories
- Includes 3mm laminate surface with brackets
- Maximum clearance under shelf: 18"

| PART NO. | DESCRIPTION | WEIGHT |
|----------|------------------------------|--------|
| WSR1236 | 12" x 36" Work Surface Riser | 16 lbs |
| WSR1248 | 12" x 48" Work Surface Riser | 21 lbs |
| WSR1260 | 12" x 60" Work Surface Riser | 31 lbs |
| WSR1272 | 12" x 72" Work Surface Riser | 36 lbs |
| WSR1296 | 12" x 96" Work Surface Riser | 42 lbs |



Shown with optional CSSDIV



CSSDIVP

Corrugate Storage Shelf

CAPACITY CSS1530: 100 lbs

CAPACITY CSS1560, CSS1590: 150 lbs

Holds multiple sizes of corrugate boxes - Ideal for packing and shipping workstations

- Accepts optional $\frac{3}{8}$ " CSSDIV rod dividers and CSSDIVP panel dividers
- Includes mounting brackets

| PART NO. | DESCRIPTION | WEIGHT |
|----------|-----------------|--------|
| CSS1530 | 15" x 30" Shelf | 17 lbs |
| CSS1560 | 15" x 60" Shelf | 30 lbs |
| CSS1590 | 15" x 90" Shelf | 46 lbs |

Storage Dividers (Optional)

| PART NO. | DESCRIPTION | WEIGHT |
|----------|-----------------------------|--------|
| CSSDIV | 12" Corrugate Shelf Divider | 1 lb |
| CSSDIVP | 12" Solid Panel Divider | 4 lbs |

BOSTONtec



CONTACT US | 989-496-3500



ACCESSORIES SHELVES



FSH1160



FSHD1160

Steel Foot Shelf

CAPACITY: 150 lbs

- Holds corrugate boxes - Ideal for oversized boxes
- Mounts on [cantilevered](#) base frames; compatible with foot or caster configuration
- Available for 36", 48", 60", and 72" [PBM](#), [PBH](#), and [AFH](#) base frames
- Available with or without slots for optional (CFSHDIV) rod dividers

| PART NO. | DESCRIPTION | WEIGHT |
|----------|---------------------------------|--------|
| FSH1136 | 11" x 36" Foot Shelf | 13 lbs |
| FSH1148 | 11" x 48" Foot Shelf | 17 lbs |
| FSH1160 | 11" x 60" Foot Shelf | 21 lbs |
| FSH1172 | 11" x 72" Foot Shelf | 25 lbs |
| FSHD1136 | 11" x 36" Foot Shelf with Slots | 13 lbs |
| FSHD1148 | 11" x 48" Foot Shelf with Slots | 17 lbs |
| FSHD1160 | 11" x 60" Foot Shelf with Slots | 21 lbs |
| FSHD1172 | 11" x 72" Foot Shelf with Slots | 25 lbs |



Corrugate Storage Divider

- Add Corrugate Storage Dividers to separate and hold items
- Use in conjunction with corresponding part numbers above
- $\frac{3}{8}$ " diameter steel divider rod

| PART NO. | DESCRIPTION | WEIGHT |
|----------|---------------------------------------|--------|
| CFSHDIV | 11"d x 12"h Corrugate Storage Divider | 1 lb |



ACCESSORIES SHELVES

Under Work Surface Shelving System

CAPACITY: 100 lbs

- Provides additional storage space for occasional use items
- Mounts under all laminate and hardwood work surfaces at least 30" deep
- Steel shelves adjust in 1" increments
- System ships with one shelf - Additional shelves can be purchased as needed
- Accepts steel shelf divider [DIV1215](#) for additional organization



UWSDDF Model



UWSBPDDF Model



WS Model

Open Back Shelf System

- Includes two side panels and one shelf
- For [AFH](#) workstation models, decrease width by one size (Ex. For an AFH3648 workstation, order UWS1436)

| PART NO. | COMPATIBILITY | WEIGHT |
|------------|--|--------|
| UWS1436 | AFH workstations at least 48" wide w/feet | 25 lbs |
| UWS1448 | AFH workstations at least 60" wide w/feet | 30 lbs |
| UWS1460 | AFH workstations at least 72" wide w/feet | 35 lbs |
| UWS1472 | AFH workstations at least 84" wide w/feet | 40 lbs |
| UWSDDF1436 | AFH workstations at least 48" wide w/casters | 23 lbs |
| UWSDDF1448 | AFH workstations at least 60" wide w/casters | 28 lbs |
| UWSDDF1460 | AFH workstations at least 72" wide w/casters | 33 lbs |
| UWSDDF1472 | AFH workstations at least 84" wide w/casters | 38 lbs |

Shelf System with Back Panel

- Includes two side panels, a back panel and one shelf
- For [PBM](#), [PBH](#), and [AFH](#) workstation models, decrease width by one size (Ex. For a PBH3672 workstation, order UWSBP1460)

| PART NO. | COMPATIBILITY | WEIGHT |
|--------------|--|--------|
| UWSBP1436 | PBM and PBH workstations at least 48" wide w/feet | 32 lbs |
| UWSBP1448 | PBM and PBH workstations at least 60" wide w/feet | 40 lbs |
| UWSBP1460 | PBM and PBH workstations at least 72" wide w/feet | 48 lbs |
| UWSBP1472 | PBM and PBH workstations at least 84" wide w/feet | 56 lbs |
| UWSBPDDF1436 | PBM and PBH workstations at least 48" wide w/casters | 30 lbs |
| UWSBPDDF1448 | PBM and PBH workstations at least 60" wide w/casters | 38 lbs |
| UWSBPDDF1460 | PBM and PBH workstations at least 72" wide w/casters | 46 lbs |
| UWSBPDDF1472 | PBM and PBH workstations at least 84" wide w/casters | 54 lbs |

Additional Shelf (Optional)

- Add an additional shelf to an under work surface shelving system
- Use in conjunction with corresponding part numbers above
- For [PBM](#), [PBH](#) and [AFH](#) workstation models, decrease width by one size (Ex. For a PBH3672 workstation, order WS1460)

| PART NO. | DESCRIPTION | WEIGHT |
|----------|---|--------|
| WS1436 | 14"d x 36"w, Single shelf for 48" wide stations | 12 lbs |
| WS1448 | 14"d x 48"w, Single shelf for 60" wide stations | 16 lbs |
| WS1460 | 14"d x 60"w, Single shelf for 72" wide stations | 20 lbs |
| WS1472 | 14"d x 72"w, Single shelf for 84" wide stations | 24 lbs |



ACCESSORIES

COMPUTER ACCESSORIES



Adjustable Height Articulating Monitor Arm

CAPACITY M2AH: 15.5 lbs

CAPACITY M8AH: 28 lbs

CAPACITY M2AHS: 15.5 lbs

CAPACITY M8AHS: 28 lbs

- Provides optimum flexibility to move monitor into position
- Has tilt adjustability for improved viewing angle
- Holds monitor securely in place
- Height adjustability range = 10" (M2AH and M2AHS), or 12" (M8AH and M8AHS)
- Extension adjustability range = 20" (M2AHS and M8AHS), or 22" (M2AH and M8AH)
- M2AHS surface mount clamp accommodates up to 3.5" thick top
- Lowest height setting of 7.5", maximum setting of 17.5" (M2AHS and M8AHS)

| PART NO. | DESCRIPTION | WEIGHT |
|----------|---|--------|
| M2AH | Adjustable Height Articulating Upright Mount Monitor Arm | 4 lbs |
| M8AH | Heavy Duty Adjustable Height Articulating Upright Mount Monitor Arm | 7 lbs |
| M2AHS | Adjustable Height Articulating Surface Mount Monitor Arm | 6 lbs |
| M8AHS | Heavy Duty Adjustable Height Articulating Surface Mount Monitor Arm | 8 lbs |



Fixed Height Articulating Monitor Arm

CAPACITY M2FH: 15.5 lbs

CAPACITY M8FH: 28 lbs

- Allows operator to swing monitor out of way when not in use
- Holds monitor securely in place
- Extension adjustability range = 18"

| PART NO. | DESCRIPTION | WEIGHT |
|----------|--|--------|
| M2FH | Fixed Height Articulating Upright Mount Monitor Arm | 4 lbs |
| M8FH | Heavy Duty Fixed Height Articulating Upright Mount Monitor Arm | 7 lbs |

Dual Monitor Arm

CAPACITY: 28 lbs

- Allows operator to swing monitor out of way when not in use
- Holds monitor securely in place



Adjustable Height Articulating Dual Monitor Arm

- Height adjustability range = 12"
- Extension adjustability range = 20" (M8AH2S,) or 22" (M8AH2)

| PART NO. | DESCRIPTION | WEIGHT |
|----------|--|--------|
| M8AH2 | Heavy Duty Adjustable Height Articulating Upright Mount Dual Monitor Arm | 9 lbs |
| M8AH2S | Heavy Duty Adjustable Height Articulating Surface Mount Dual Monitor Arm | 10 lbs |

Fixed Height Articulating Dual Monitor Arm

- Extension adjustability range = 18"

| PART NO. | DESCRIPTION | WEIGHT |
|----------|---|--------|
| M8FH2 | Heavy Duty Fixed Height Articulating Surface Mount Dual Monitor Arm | 9 lbs |

CONTACT US | 989-496-3500

BOSTONtec





ACCESSORIES

COMPUTER ACCESSORIES



| PART NO. | DESCRIPTION | WEIGHT |
|----------|----------------------|--------|
| MLH | 9"x11" Laptop Holder | 3 lbs |

Laptop Holder

CAPACITY: 15.5 lbs

- Provides quick access to laptop then swings out of way when not in use
- Mounts on M2 and M8 arms
- Adjustable holder securely accommodates a variety of laptop sizes: 9.1" deep minimum, 13.5" deep maximum



| PART NO. | DESCRIPTION | WEIGHT |
|----------|---------------|--------|
| MTH | Tablet Holder | 2 lbs |

Tablet Holder

CAPACITY: 15.5 lbs

- Provides quick access to tablet then swings out of way when not in use
- Mounts on M2 and M8 arms, and VESA plate
- Adjustable holder securely accommodates a variety of tablet sizes: 5.8" minimum, 10" maximum



| PART NO. | DESCRIPTION | WEIGHT |
|----------|--|--------|
| M8KTAH | Heavy Duty Adjustable Height Monitor and Keyboard Upright Mount Articulating Arm | 12 lbs |
| M8KTAHS | Heavy Duty Adjustable Height Monitor and Keyboard Surface Mount Articulating Arm | 12 lbs |

Adjustable Height Articulating Monitor and Keyboard Arm

CAPACITY: 28 lbs

- Allows operator to position both monitor and keyboard together then swings out of way when not in use
- Monitor has tilt adjustability for improved viewing angle
- Tray size 10"d x 27"w
- Tray includes padded ergonomic wrist support strip
- Height adjustability range = 12"
- Extension adjustability range = 20" (MBKTAHS,) or 22" (M8KTAH)



| PART NO. | DESCRIPTION | WEIGHT |
|----------|---|--------|
| KAAH | Adjustable Height Articulating Upright Mount Keyboard Tray w/Mouse Platform | 5 lbs |

Adjustable Height Articulating Keyboard Tray with Mouse Platform

CAPACITY: 15.5 lbs

- Provides optimum flexibility to move keyboard into ergonomic position
- Keyboard tray rotates for easy adjustment
- Tray includes 2" padded ergonomic wrist support strip
- Height adjustability range = 10"
- Extension adjustability range = 22"
- Keyboard tray is 10 1/2"d x 19"w; Mouse platform is 8 3/4" diameter

qts

BOSTONtec



CONTACT US | 989-496-3500



ACCESSORIES

COMPUTER ACCESSORIES



QTS

| PART NO. | DESCRIPTION | WEIGHT |
|----------|--|--------|
| KAFH | Fixed Height Articulating Upright Mount Keyboard Tray w/Mouse Platform | 5 lbs |

Fixed Height Articulating Keyboard Tray with Mouse Platform

CAPACITY: 15.5 lbs

- Allows operator to swing keyboard tray out of way when not in use
- Keyboard tray rotates for easy adjustment
- Holds tray securely in place
- Tray includes 2" padded ergonomic wrist support strip
- Extension adjustability range = 18"
- Keyboard tray is 10 ½" d x 19" w; Mouse platform is 8 ¾" diameter



QTS

| PART NO. | DESCRIPTION | WEIGHT |
|----------|---|--------|
| UWKMS | Under Work Surface Keyboard Tray w/Sliding Mouse Platform | 19 lbs |

Under Work Surface Keyboard Tray with Sliding Mouse Platform

CAPACITY: 15 lbs

Keyboard Tray

- Mounts under all PBM work surface depths ≥ 30", and any PBH, AFH, and TCBE
- 18" track allows operator to access or stow as needed
- 7" height adjustability, and 0°-15° tilt
- Tray size 10.625" d x 19" w
- Includes 19" Technogel palm support

Mouse Platform

- 9" diameter, 8" slide adjustment
- Left/right adaptable slide mount to suit user preference



QTS

| PART NO. | DESCRIPTION | WEIGHT |
|----------|--|--------|
| UWKMP | Under Work Surface Keyboard and Mouse Platform | 19 lbs |

Under Work Surface Keyboard and Mouse Platform

CAPACITY: 15 lbs

- Mounts under all PBM work surface depths ≥ 30", and any PBH, AFH, and TCBE
- 18" track allows operator to access or stow as needed
- 7" height adjustability, and 0°-15° tilt
- Tray size 10.625" d x 27" w
- Includes 27" Technogel palm support
- Built-in left/right mouse area



| PART NO. | DESCRIPTION | WEIGHT |
|----------|------------------------------------|--------|
| POK2114 | 14"d x 21"w Pull-Out Keyboard Tray | 13 lbs |
| POK2118 | 18"d x 21"w Pull-Out Keyboard Tray | 16 lbs |

Pull-Out Keyboard Tray

CAPACITY: 40 lbs

- 13" slides allows operator to access or stow as needed
- 2 ¼" height clearance for keyboard

14" Deep Tray:

- Mounts under all laminate and hardwood work surfaces
- Full extension ball bearing slides

18" Deep Tray:

- Mounts under all laminate and hardwood work surfaces at least 30" deep
- ¾" extension ball bearing slides

BOSTONtec



CONTACT US | 989-496-3500



ACCESSORIES

COMPUTER ACCESSORIES



PH1313

| PART NO. | DESCRIPTION | WEIGHT |
|----------|--------------------|--------|
| PH1313 | 13" x 13" Platform | 10 lbs |
| PH1322 | 13" x 22" Platform | 11 lbs |

Articulating Platform Arm

CAPACITY: 40 lbs

- Provides easy, quick access to items then swings out of way when not in use
- Rotates 360°
- Extension adjustability range = 22" (to platform center)



CPU12

CPU20

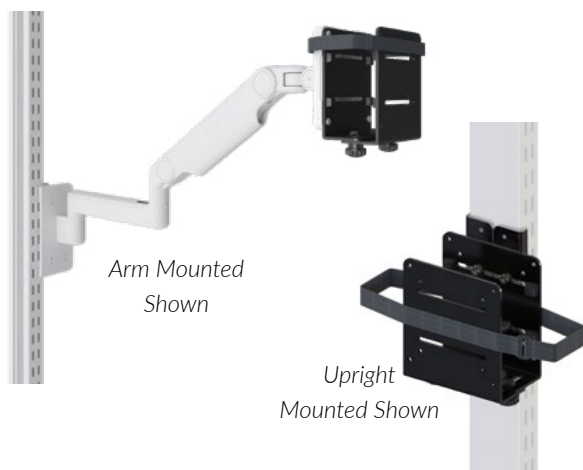
Under Work Surface CPU Holders

CAPACITY CPU12: 15 lbs

CAPACITY CPU20: 50 lbs

- Securely holds CPU off of floor and provides easy access when needed
- Easy installation via Quick Lock Technology
- Adjusts to fit CPUs 1"-5"w by 6"-12"h (CPU12)
- Adjusts to fit CPUs 3½"-9"w by 12"-20"h (CPU20)
- Slides smoothly on nylon glides in 16" track
- 360° degree swivel allows access to cables and ports
- Mounts under all laminate and hardwood work surfaces at least 30"d

| PART NO. | DESCRIPTION | WEIGHT |
|-----------|-------------|--------|
| QTS CPU12 | CPU Holder | 9 lbs |
| QTS CPU20 | CPU Holder | 11 lbs |

Arm Mounted
ShownUpright
Mounted Shown

CPU Holder - Thin Client

CAPACITY: ≤ 10 lbs (Upright mounted)

CAPACITY: ≤ 15 lbs (Monitor plus CPU total)

- Wrap around design provides easy access when needed
- Mounts on standard uprights
- Standard VESA mounting pattern (75 x 75mm and 100 x 100mm sizes)
- Upright mounting brackets, monitor screws, and Security strap included
- Adjusts to fit CPUs 1¼"-2½"d x 4"-8"h (suggested min-max width: 4 ½"-10")
- Color: Black

| PART NO. | DESCRIPTION | WEIGHT |
|-----------|------------------------|--------|
| QTS CPUTC | CPU Holder Thin Client | 3 lbs |



ACCESSORIES POWER & LIGHTS



PWRBAR815SB



PWRBAR820SB

8-Outlet Horizontal Power Bars

- Keeps power within reach for easy end of day shut down of tools and lights
- Mounts on standard uprights at any horizontal position, front or back
- Standard black powder coat finish
- 8 AC power outlets (120 VAC, 15A or 20A)
- Circuit breaker and lighted on/off switch
- UL and CSA listed and approved
- Cord length: 15 feet
- Locking brackets secure power bar to uprights
- Locking plug cord options available upon request



| PART NO. | DESCRIPTION | WEIGHT |
|-------------|------------------------------------|--------|
| PWRBAR815SB | Horizontal 8-Outlet Power Bar, 15A | 6 lbs |
| PWRBAR820SB | Horizontal 8-Outlet Power Bar, 20A | 6 lbs |



Horizontal Power Bar Work Surface Mount

- Mounts power bar to work surface for easy access, no uprights required
- Mounts above or below work surface

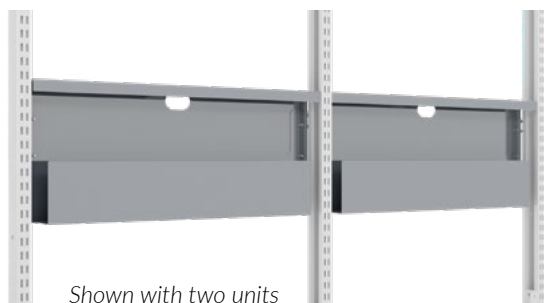
| PART NO. | DESCRIPTION | WEIGHT |
|----------|--|--------|
| HPBWM | Power Bar Work Surface Mount (Pair) | 1 lb |



| PART NO. | DESCRIPTION | WEIGHT |
|----------|----------------------|--------|
| PB6OUTH | Horizontal Power Bar | 4 lbs |
| PB6OUTV | Vertical Power Bar | 4 lbs |

6-Outlet Power Bars

- Keeps power within reach for easy end of day shut down of tools and lights
- Extruded aluminum housing
- 6 AC power outlets (115 VAC 15A)
- Circuit breaker and lighted switch
- UL and CSA listed and approved
- Length of power cord: 15 feet
- Horizontal power bar mounts to underside of work surface
- Vertical power bar mounts on standard uprights



| PART NO. | DESCRIPTION | WEIGHT |
|----------|------------------------|--------|
| WT0210 | Wire Management Trough | 10 lbs |

Wire Management Trough

CAPACITY: 10 lbs

- Keeps electrical wires off surface providing additional work space
- Hides wires for neater workstation appearance
- Optional forward or backward facing mount
- Mount below work surface and behind workstation to further conceal wires
- 10"h x 30"w



ACCESSORIES POWER & LIGHTS



Includes 5 ea.

Wire Management Kit

Small black magnetic tie mounts and standard black zip ties in zip bag

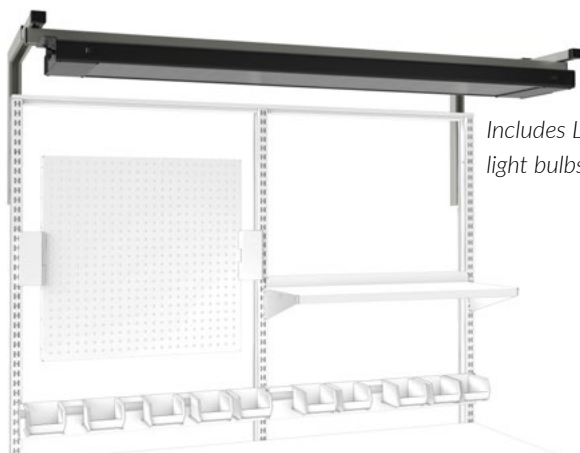
| PART NO. | DESCRIPTION |
|----------|---------------------|
| WMK | Wire Management Kit |



Air Outlet Mounting Plate

- Mounts on top or underside of work surface or powerbar ([PWRBAR815SB](#)/[PWRBAR820SB](#))
- Plate supports three air outlets
- Customer to determine mounting location and drill holes

| PART NO. | DESCRIPTION | WEIGHT |
|----------|--------------------|--------|
| AIR | Air Mounting Plate | 1 lb |



Includes LED
light bulbs



LED Overhead Light

- Provides additional lighting directly over work surface
- Includes "L" bracket and tool track for mounting light
- Support extends up to 18" from uprights
- 4000 Kelvin temperature
- 2-bulb is available in 56" long housing
- 4-bulb is available in 32" and 56" long housing
- Optional open grate parabolic filter directs light over the work surface (Shown in inset.)
- Pair with power bar [PWRBAR815SB](#) or [PWRBAR815SB](#) for convenient on/off feature

QIS
QIS
QIS

| PART NO. | DESCRIPTION |
|-----------|--|
| LED243248 | LED Overhead Light (4) 24" Bulbs, 48" Tool Track |
| LED225660 | LED Overhead Light (2) 48" Bulbs, 60" Tool Track |
| LED225672 | LED Overhead Light (2) 48" Bulbs, 72" Tool Track |

Optional Parabolic Filter

| PART NO. | DESCRIPTION | WEIGHT |
|----------|----------------------------------|--------|
| LEDPF32 | Parabolic Filter for 32" Housing | 1 lb |
| LEDPF56 | Parabolic Filter for 56" Housing | 1 lb |

BUILD YOUR PART NUMBER

LED2256P60

Prefix

Length of
housing

Length of
tool track

Number of
bulbs

Parabolic filter
(optional)

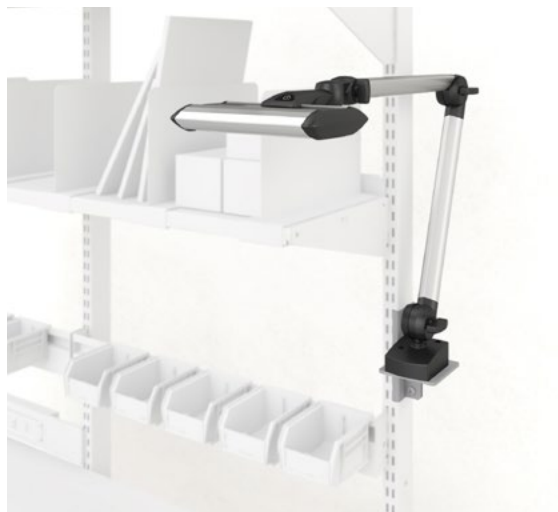
BOSTONtec



CONTACT US | 989-496-3500



ACCESSORIES POWER & LIGHTS



Task Light

- Additional light for detailed tasks; reduces eye strain
- 12-watt LED light
- Comes with standard 5000 Kelvin temperature;
- Electronic ballast
- Extension adjustability range = 35"
- On and off buttons on lamp head
- Touch DIM and multi-function switch
- Includes work surface edge mounting clamp and upright mounting clamp [WTLTM](#)
- CE and ETL listed

| PART NO. | DESCRIPTION | WEIGHT |
|----------|---------------------|---------|
| WTL136 | Waldmann Task Light | 4.4 lbs |



LTLM

WTLTM

Task Light Mounting Clamps

- Mount Waldmann or Luxo lamps to uprights saving work surface space
- Adjust vertically in 1" increments
- Include clamp assembly only

| PART NO. | DESCRIPTION | WEIGHT |
|----------|------------------------------------|--------|
| WTLTM | Waldmann Task Light Mounting Clamp | 3 lbs |
| LTLM | Luxo Task Light Mounting Clamp | 2 lbs |



SLS24S

SLS24A

Standard LED Under Shelf Light

- 3500 K light color
- 24" light: 72 LEDs, 700 lumens; 44" light: 132 LEDs, 1313 lumens
- 40-watt power supply
- Built-in on/off switch with 100%-15% dimming capability
- Screw, magnetic mounting clips, and wire management included
- 10' power cord. Adder option includes 18" jumper cord

| PART NO. | DESCRIPTION | WEIGHT |
|----------|-------------------------|--------|
| SLS24S | 24"w Task Light Starter | 3 lbs |
| SLS24A | 24"w Task Light Adder | 3 lbs |
| SLS44 | 44"w Task Light | 5 lbs |



ACCESSORIES

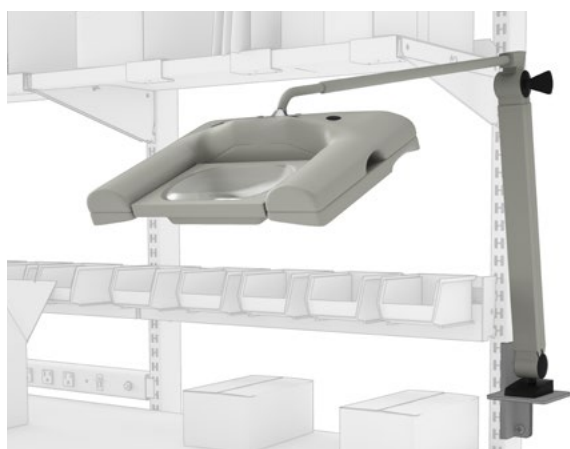
POWER & LIGHTS



Premium LED Under Shelf Light

- 3500 K light color
- 24" light: 36 LEDs, 721 lumens; 44" light: 72 LEDs, 1446 lumens
- 60-watt power supply
- Built-in on/off switch with 100%-15% dimming capability
- Screw, magnetic mounting clips, and wire management included
- 11' power cord. Adder option includes 8" and 30" jumper cords

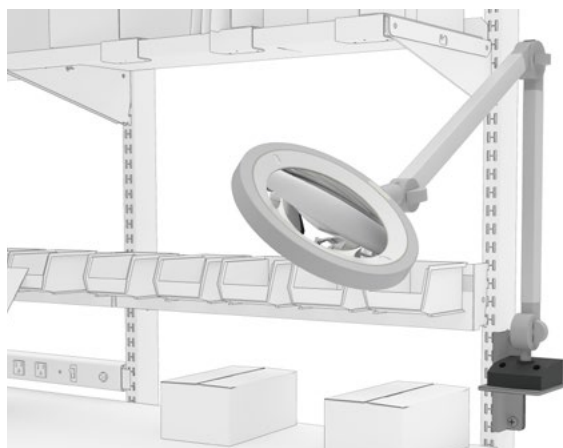
| PART NO. | DESCRIPTION | WEIGHT |
|----------|-------------------------|--------|
| SLP24S | 24"w Task Light Starter | 3 lbs |
| SLP24A | 24"w Task Light Adder | 3 lbs |
| SLP44 | 44"w Task Light | 5 lbs |



Max Magnifier

- Uses three 3.5-watt LED modules for two light levels
- 3 diopter primary lens included, tilts independently of the light for optimal positioning
- 4 and 4-12 diopter accessory lens available
- Extension adjustability range = 43"
- Includes work surface edge mounting clamp and upright mounting clamp [WTLM](#)
- ETL listed

| PART NO. | DESCRIPTION | WEIGHT |
|----------|---------------------------------|--------|
| WPML26 | Max Magnification Lamp | 31 lbs |
| WPM4 | Max 4 Diopter Accessory Lens | 3 lbs |
| WPM412 | Max 4-12 Diopter Accessory Lens | 3 lbs |



LED Ring Magnifier

- 12-watt LED technology
- Includes 3.5 diopter primary lens
- Extension adjustability range = 37"
- Includes work surface edge mounting clamp and upright mounting clamp [WTLM](#)

| PART NO. | DESCRIPTION | WEIGHT |
|----------|---------------------------------|--------|
| RMLED | LED Circular Magnification Lamp | 5 lbs |

Increase Your Productivity

How Assembly Workstations Can Help Improve Speed and Accuracy

View More Details



SCAN ME
Hold camera to
image



Ergonomic Assembly Workstations and Workbenches

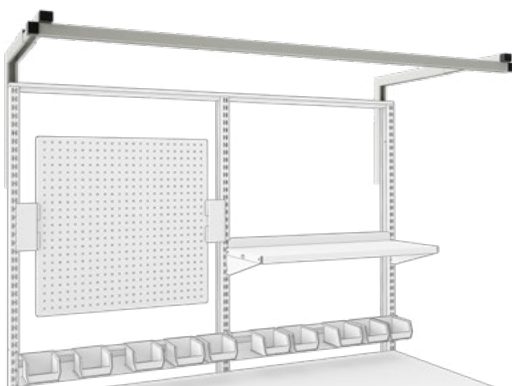
Mechanical or electronic assembly, inspection, testing and quality control activities can be performed faster and safer utilizing a properly designed assembly workbench.

KEY BENEFITS :

- Reduce non-value added motions and improve efficiency
- Prevent work-related musculoskeletal disorders (WMSD) by minimizing exposure to ergonomic risks
- Adjust to specific work processes with modular workstation design
- Meet individual task and operator needs with adjustable workbench and accessories
- Attract and retain employees with enhanced comfort and safety at the workplace



ACCESSORIES TOOL SUPPORT

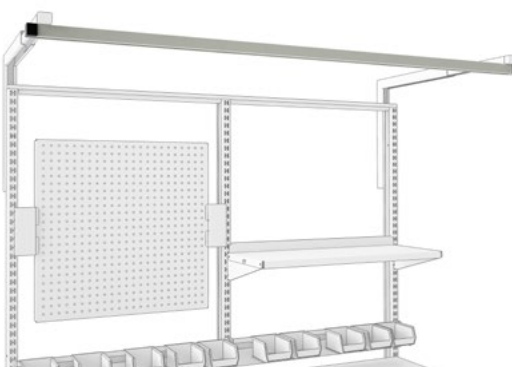


Overhead Tool Support

CAPACITY: 35 lbs

- Provides support for tool trolley and tool balancer
- Includes "L" brackets for mounting to uprights

| PART NO. | DESCRIPTION | WEIGHT |
|----------|-------------|--------|
| OTS36 | 36" Rail | 16 lbs |
| OTS48 | 46" Rail | 17 lbs |
| OTS60 | 60" Rail | 18 lbs |
| OTS72 | 70" Rail | 19 lbs |
| OTS96 | 94" Rail | 32 lbs |

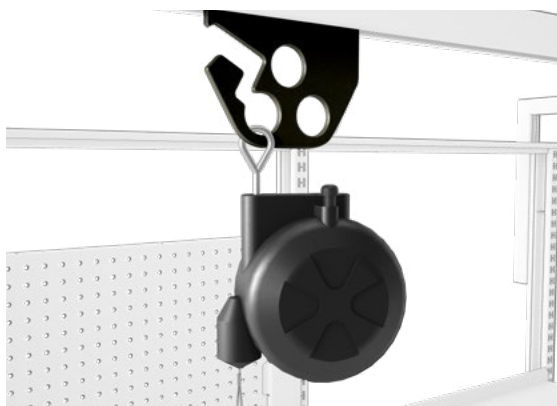


Auxiliary Tool Track

CAPACITY: 35 lbs

- Mounts on overhead tool tracks OTS and [LED](#) light models
- Provides support for tool trolley and tool balancer
- Does not include "L" brackets

| PART NO. | DESCRIPTION | WEIGHT |
|----------|-------------|--------|
| ATT36 | 36" Rail | 5 lbs |
| ATT48 | 46" Rail | 6 lbs |
| ATT60 | 60" Rail | 7 lbs |
| ATT72 | 70" Rail | 8 lbs |
| ATT96 | 94" Rail | 11 lbs |



Tool Trolley

- Fits standard tool rail OTS and ATT tool track models
- Supports TBBD03 tool balancer
- Color: Black

Tool Balancer

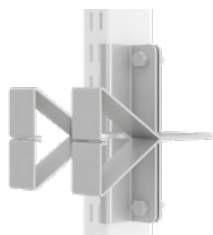
CAPACITY: 1.5 - 3 lbs Balance Range

- 360° rotation swivel mount
- Palm hand wheel adjustment
- Push button tension release
- Nylon covered steel cable assembly
- Adjustable drag brake fine tunes balancing
- Adjustable bail stop on cable
- Color: Black

| PART NO. | DESCRIPTION | WEIGHT |
|----------|-----------------------|--------|
| TBT | Tool Balancer Trolley | 2 lbs |
| TBBD03 | Tool Balancer | 1 lb |



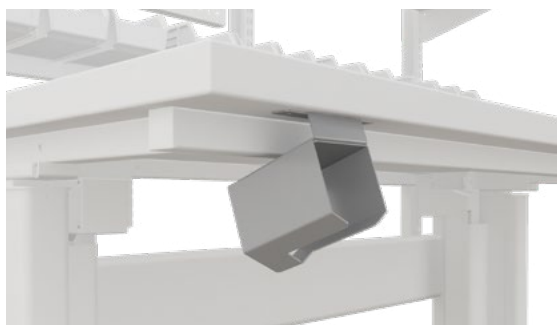
ACCESSORIES TOOL SUPPORT



Upright Mounted Scanner Bracket

- Helps keep scanner within easy reach
- The 1.57" wide opening fits most handheld scanners
- Easily adjusted bracket positioning (Left/right side mount adaptable)

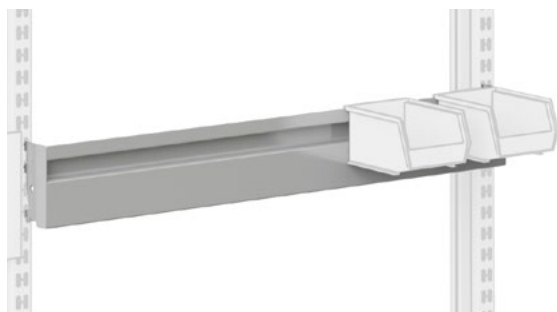
| PART NO. | DESCRIPTION | WEIGHT |
|----------|---------------------------------|--------|
| UMSB | Upright Mounted Scanner Bracket | 2 lbs |



Power Tool Holder

- Helps keep power tools within easy reach
- Fits most handheld drills and impact drivers
- Easily adjusted holder positioning
- Attaches to all work surface options and workstations
- Compatible with SS and WSR shelving (Max. of 2 holders per shelf)

| PART NO. | DESCRIPTION | WEIGHT |
|----------|-------------------|--------|
| PTH | Power Tool Holder | 2 lbs |



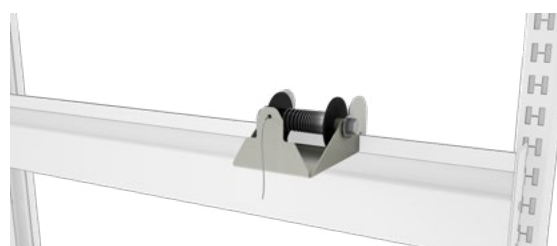
Bin Rail

CAPACITY: 40 lbs

- Keeps small items sorted and within reach
- Supports assorted size storage bins
- Horizontal or 15° forward-tilted positioning for easy bin access
- 29"w x 4"h



| PART NO. | DESCRIPTION | WEIGHT |
|----------|-------------|--------|
| BR0429 | Bin Rail | 4 lbs |



Solder Spool Holder

- Holds one roll of solder or wire
- Mounts on bin rail BR0429
- Multiples can mount side by side

| PART NO. | DESCRIPTION | WEIGHT |
|----------|---------------------|---------|
| SSH | Solder Spool Holder | .25 lbs |



Chemical and Tool Tray

- Holds standard small bottles of chemicals and small hand tools
- Mounts on bin rail BR0429
- 5"w x 5"d box, 12"w x 5"d overall
- Multiples can mount side by side

| PART NO. | DESCRIPTION | WEIGHT |
|----------|------------------------|--------|
| CTT512 | Chemical and Tool Tray | 1 lb |



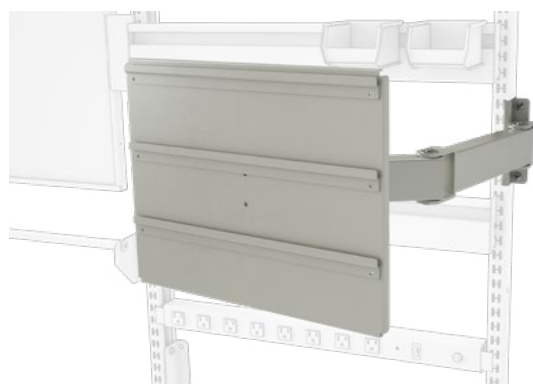
ACCESSORIES TOOL SUPPORT



Bin Rail Wipe and Tissue Holder

- Keeps cleaning wipes within reach
- Mounts on bin rail BR0429
- Holds one standard wipe or tissue package
- Tissue box can be inverted enabling tissues to be removed downward

| PART NO. | DESCRIPTION | WEIGHT |
|----------|-------------|--------|
| KWH000 | Wipe Holder | .5 lbs |



Articulating Bin Holder

CAPACITY: 40 lbs

- Places small items within reach when needed, then swing out of the way when not in use
- Supports assorted size storage bins
- Three bin support rails are permanently positioned
- Bin support panel swivels
- Mounts on right or left side of uprights
- 18"w x 14"h
- Extension adjustability range = 24"

| PART NO. | DESCRIPTION | WEIGHT |
|----------|-------------------------|--------|
| BH1420 | Articulating Bin Holder | 9 lbs |



Keyboard Tray for Bin Rail Mount

CAPACITY: 6 lbs

- Attaches to bin rail [BR0429](#) to support a standard keyboard at a 15° tilt
- Tray size 7" d x 19"w

| PART NO. | DESCRIPTION | WEIGHT |
|----------|----------------------------|--------|
| KT1907S | Keyboard Tray for Bin Rail | 3 lbs |



Overhead Spool Holder

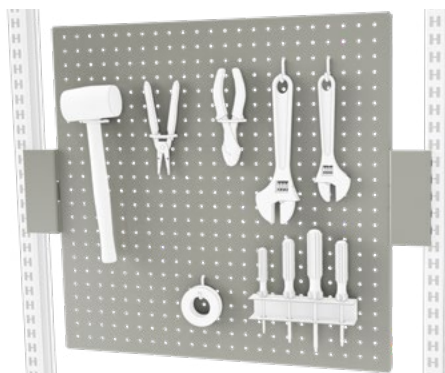
CAPACITY: 50 lbs

- Keeps bubble wrap easily accessible to operator
- 30" rod length for uprights [SBUP53](#); 60" rod length for [DBUP53](#) and [TBUP53](#)
- Accepts rolls up to 36" in diameter
- Compatible with [trolleys](#)

| PART NO. | DESCRIPTION | WEIGHT |
|----------|---------------------------|--------|
| OSH3030 | 30" Overhead Spool Holder | 15 lbs |
| OSH3060 | 60" Overhead Spool Holder | 18 lbs |



ACCESSORIES TOOL SUPPORT



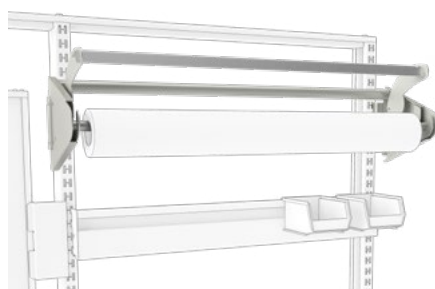
Peg Board

CAPACITY: 40 lbs

- Helps keep tools, keys and other supplies within reach and frees up work space
- Accepts standard peg board accessories
- Includes mounting brackets



| PART NO. | DESCRIPTION | WEIGHT |
|----------|---------------------|--------|
| BS2428P | 24" x 28" Peg Board | 4 lbs |

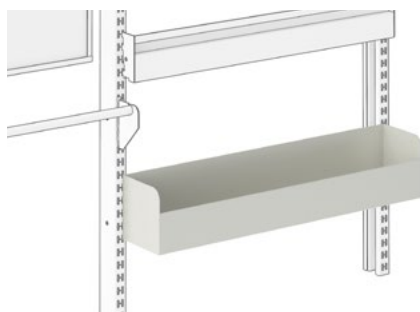


Paper Holder and Cutter

CAPACITY: 75 lbs

- Convenient all-in-one holder/cutter for packing and wrapping paper
- Accepts rolls up to 30" wide and 9" diameter

| PART NO. | DESCRIPTION | WEIGHT |
|----------|-------------------------|--------|
| PHC830 | Paper Holder and Cutter | 10 lbs |



Label Holder Trough

CAPACITY: 40 lbs

- Perfect for holding label rolls, cleaning supplies, small tools and other necessities
- Keeps items off surface providing additional work space
- 5"h x 5"d x 30"w

| PART NO. | DESCRIPTION | WEIGHT |
|----------|---------------------|--------|
| LH0530 | Label Holder Trough | 10 lb |



Spool/Label Roll Holder Rod

CAPACITY: 50 lbs

- Holds rolls of tape or labels
- 3/4" tube



| PART NO. | DESCRIPTION | WEIGHT |
|----------|------------------|--------|
| SHR830 | Spool Holder Rod | 1 lb |

Adjust Your Work With Ease

Boosting Efficiency in Wire Assembly

Learn more!

CONTACT US | 989-496-3500



Steel Drawer Cabinets

This sleek, upgraded design complements any workspace!

KEY BENEFITS :

- Full Extension Slides: Enjoy smooth access to the entire drawer depth.
- Increased Capacity: Support up to 100 lbs per drawer and 250 lbs per drawer cabinet.
- Secure Locking System (Optional): Lock multiple drawers with one key.
- Flexible Configuration: Easily swap drawers and slides to meet changing needs.



ACCESSORIES STORAGE

Steel Drawer Cabinets

CAPACITY SINGLE DRAWER: 100 lbs

CAPACITY CABINET BOX: 250 lbs

- Full extension ball bearing drawer slides
- Easy swap drawer and slide design offers flexibility to meet changing needs
- Includes mounting brackets
- Locking option available
- 12" h drawer accommodates standard hanging files
- Contact BOSTONtec for compatibility details and additional configuration options



DR1212



DR21030612

Single Drawer Cabinet

| | PART NO. | DESCRIPTION | WEIGHT |
|-----|----------|--|--------|
| | DR0303L | (1) 3" h Drawer, 3" h x 18" d x 12" w, Locking | 26 lbs |
| Q1s | DR0303 | (1) 3" h Drawer, 3" h x 18" d x 12" w, Non-Locking | 26 lbs |
| | DR0606L | (1) 6" h Drawer, 6" h x 18" d x 12" w, Locking | 32 lbs |
| Q1s | DR0606 | (1) 6" h Drawer, 6" h x 18" d x 12" w, Non-Locking | 31 lbs |
| | DR1212L | (1) 12" h Drawer, 12" h x 18" d x 12" w, Locking | 44 lbs |
| Q1s | DR1212 | (1) 12" h Drawer, 12" h x 18" d x 12" w, Non-Locking | 43 lbs |

Popular Drawer Cabinet Configurations

| | PART NO. | DESCRIPTION | WEIGHT |
|-----|-------------|---|--------|
| | DR120606L | (2) 6" h Drawers Stacked, 12" h x 18" d x 12" w, Locking | 49 lbs |
| Q1s | DR120606 | (2) 6" h Drawers Stacked, 12" h x 18" d x 12" w, Non-Locking | 49 lbs |
| | DR18060606L | (3) 6" h Drawers Stacked, 18" h x 18" d x 12" w, Locking | 65 lbs |
| Q1s | DR18060606 | (3) 6" h Drawers Stacked, 18" h x 18" d x 12" w, Non-Locking | 64 lbs |
| | DR21030612L | (1) 3" h, (1) 6" h, and (1) 12" h Drawers Stacked, 21" h x 18" d x 12" w, Locking | 73 lbs |
| Q1s | DR21030612 | (1) 3" h, (1) 6" h, and (1) 12" h Drawers Stacked, 21" h x 18" d x 12" w, Non-Locking | 72 lbs |
| | DR180612L | (1) 6" h Drawer and (1) 12" h Drawer Stacked, 18" h x 18" d x 12" w, Locking | 62 lbs |
| Q1s | DR180612 | (1) 6" h Drawer and (1) 12" h Drawer Stacked, 18" h x 18" d x 12" w, Non-Locking | 61 lbs |

BUILD YOUR PART NUMBER

DR: Steel Drawers (18" d)

DR-L: Locking Steel Drawers

Drawer heights: 3" | 6" | 12"

Drawer depths: 18"

Drawer widths: 12"

Cabinet box sizes: 3" | 6" | 12" | 18" | 21"

Additional sizes available upon request

DR18060606L

Prefix

Cabinet Box Size

Drawer Sizes

Locking

CONTACT US | 989-496-3500





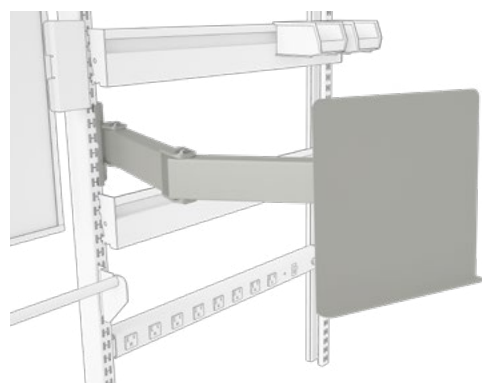
ACCESSORIES

OTHER POPULAR ACCESSORIES

**Steel Pull-Out Work Surface****CAPACITY: 40 lbs**

- Provides on-demand additional work surface space
- Mounts under work surfaces at least 30" deep
- $\frac{3}{4}$ extension ball bearing slides allows surface to extend 13 $\frac{1}{2}$ "

| PART NO. | DESCRIPTION | WEIGHT |
|----------|--------------------------------|--------|
| PO1118 | Work Surface Pullout 11" x 18" | 10 lbs |

**Articulating Document Holder****CAPACITY: 15 lbs**

- Allows user to properly place printed materials to improve neck posture
- Mounts on left or right side of uprights
- Tilt adjustment: 20° to 90°
- Extension adjustability range = 24"

| PART NO. | DESCRIPTION | WEIGHT |
|----------|---------------------------|--------|
| DH1111 | 11" x 11" Document Holder | 7 lbs |
| DH1420 | 14" x 20" Document Holder | 8 lbs |

**Clothes Hanger Arm****CAPACITY: 25 lbs**

- Add to workstation uprights or trolley to hang garments for packaging or returns
- Swivels out of way when not in use
- Extension = 11"

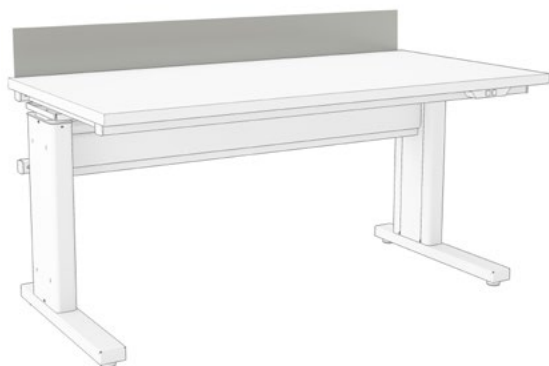
| PART NO. | DESCRIPTION | WEIGHT |
|----------|------------------------|--------|
| URCH | 11" Clothes Hanger Rod | 1 lb |

BOSTONtec**CONTACT US | 989-496-3500**



ACCESSORIES

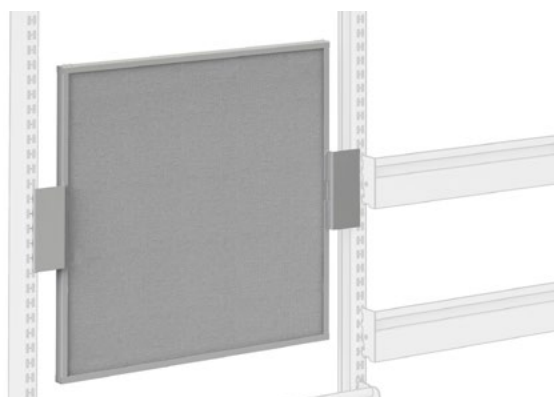
OTHER POPULAR ACCESSORIES

**Work Surface Backstop**

- Helps keep items on work surface and within reach
- 6" high backstop for the rear of work surface
- Backstops are 2" less than work surface width
- Compatible with premium laminate 3M, post formed PF, stainless steel SS, and maple MS work surfaces
- Contact BOSTONtec for phenolic resin option PR

| PART NO. | DESCRIPTION | WEIGHT |
|----------|----------------------------|--------|
| BS0636 | 34"w for 36"w work surface | 8 lbs |
| BS0648 | 46"w for 48"w work surface | 10 lbs |
| BS0660 | 58"w for 60"w work surface | 13 lbs |
| BS0672 | 70"w for 72"w work surface | 15 lbs |

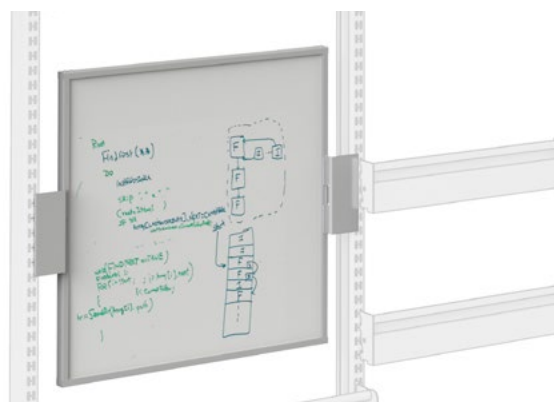
* Add "T" to end of part number for T-Mold work surfaces

**Tackable Backscreen**

- Tackable light gray fabric panel (Other colors available on request)
- Steel frame
- Includes mounting brackets
- Available with ESD fabric



| PART NO. | DESCRIPTION | WEIGHT |
|----------|--------------------------|--------|
| BS2428 | 24" x 28" Backscreen | 4 lbs |
| BSE2428 | 24" x 28" ESD Backscreen | 4 lbs |

**Whiteboard**

- White dry erase board
- Steel frame
- Includes mounting brackets
- Available in magnetic



| PART NO. | DESCRIPTION | WEIGHT |
|----------|-------------------------------|--------|
| BS2428W | 24" x 28" Whiteboard | 4 lbs |
| BS2428M | 24" x 28" Magnetic Whiteboard | 4 lbs |



ACCESSORIES

OTHER POPULAR ACCESSORIES

Attached Footrest

- Provides consistent ergonomic comfort when sitting
- Mounts on [cantilevered](#) workstations
- Finished with textured black powder coat paint for slip resistant surface



AFR Model



PBHFR Model

Retrofitted and Factory Installed

- Compatible with [AFH](#), [PBM](#) and [PBH](#) model workstations
- Fixed 15° tilt
- Adjustable on workstation foot; slides front to back

| PART NO. | DESCRIPTION | WEIGHT |
|----------|--------------------------------|--------|
| AFR1236 | 12" x 24" Platform on 36" Base | 14 lbs |
| AFR1248 | 12" x 30" Platform on 48" Base | 18 lbs |
| AFR1260 | 12" x 48" Platform on 60" Base | 22 lbs |
| AFR1272 | 12" x 48" Platform on 72" Base | 26 lbs |

Factory Installed Only

- Compatible with [AFH](#), [PBM](#) and [PBH](#) model workstations
- Adjustable tilt up to 30°
- For workstations with casters, consult your sales representative

| PART NO. | DESCRIPTION | WEIGHT |
|-----------|-------------|--------|
| PBHFR1036 | 8" x 19" | 16 lbs |
| PBHFR1048 | 8" x 31" | 20 lbs |
| PBHFR1060 | 8" x 43" | 24 lbs |
| PBHFR1072 | 8" x 55" | 29 lbs |

**Free Standing Footrest**

- Provides movable, on-demand ergonomic comfort when sitting
- Adjustable tilt up to 25°
- 8" of platform height adjustability
- Finished with textured black powder coat paint for slip resistant surface



| PART NO. | DESCRIPTION | WEIGHT |
|----------|------------------------|--------|
| FSFR | Free Standing Footrest | 15 lbs |



- Light gray laminate work surfaces
- For quantities of five or less
(For quantities greater than 5, consult BOSTONtec.)
- Powder coat color selection options:



Work Surfaces

| PART NO. | PREMIUM GRADE LAMINATE |
|----------|------------------------|
| 3M3048G | 30"d x 48"w |
| 3M3060G | 30"d x 60"w |
| 3M3072G | 30"d x 72"w |
| 3M3648G | 36"d x 48"w |
| 3M3660G | 36"d x 60"w |
| 3M3672G | 36"d x 72"w |

Workstations

| PART NO. | WORKSTATION BASE FRAME |
|-----------|---|
| PBM3048 | 30"d x 48"w, Medium Duty - Electric |
| PBM3060 | 30"d x 60"w, Medium Duty - Electric |
| PBM3072 | 30"d x 72"w, Medium Duty - Electric |
| PBM3648 | 36"d x 48"w, Medium Duty - Electric |
| PBM3660 | 36"d x 60"w, Medium Duty - Electric |
| PBM3672 | 36"d x 72"w, Medium Duty - Electric |
| PBH3048 | 30"d x 48"w, Heavy Duty - Electric |
| PBH3060 | 30"d x 60"w, Heavy Duty - Electric |
| PBH3072 | 30"d x 72"w, Heavy Duty - Electric |
| PBH3648 | 36"d x 48"w, Heavy Duty - Electric |
| PBH3660 | 36"d x 60"w, Heavy Duty - Electric |
| PBH3672 | 36"d x 72"w, Heavy Duty - Electric |
| AFH3048 | 30"d x 48"w, Heavy Duty - Manual |
| AFH3060 | 30"d x 60"w, Heavy Duty - Manual |
| AFH3072 | 30"d x 72"w, Heavy Duty - Manual |
| AFH3648 | 36"d x 48"w, Heavy Duty - Manual |
| AFH3660 | 36"d x 60"w, Heavy Duty - Manual |
| AFH3672 | 36"d x 72"w, Heavy Duty - Manual |
| FPL303048 | 30"h x 30"d, 48"w, With Leveler Glides - Extension Legs |
| FPL303060 | 30"h x 30"d, 60"w, With Leveler Glides - Extension Legs |
| FPL303072 | 30"h x 30"d, 72"w, With Leveler Glides - Extension Legs |
| FPL303648 | 30"h x 36"d, 48"w, With Leveler Glides - Extension Legs |
| FPL303660 | 30"h x 36"d, 60"w, With Leveler Glides - Extension Legs |
| FPL303672 | 30"h x 36"d, 72"w, With Leveler Glides - Extension Legs |
| FPC303048 | 30"h x 30"d, 48"w, With Casters - Extension Legs |
| FPC303060 | 30"h x 30"d, 60"w, With Casters - Extension Legs |
| FPC303072 | 30"h x 30"d, 72"w, With Casters - Extension Legs |
| FPC303648 | 30"h x 36"d, 48"w, With Casters - Extension Legs |
| FPC303660 | 30"h x 36"d, 60"w, With Casters - Extension Legs |
| FPC303672 | 30"h x 36"d, 72"w, With Casters - Extension Legs |

Feet or Casters

| WORKSTATION MODEL | DEPTH | LEVELER FEET | CASTERS (4 LOCKING) |
|-------------------|-------|--------------|---------------------|
| PBM | 30 | FA30P | FE30P |
| | 36 | FA36P | FE36P |
| PBH | 30 | FA30I | FE30I |
| | 36 | FA36I | FE36I |
| AFH | 30 | FA30C | FE30C |
| | 36 | FA36C | FE36C |



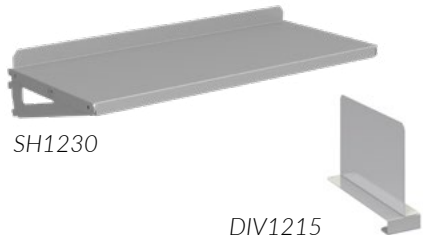
| PART NO. | DESCRIPTION |
|----------|-----------------------------|
| SBUP53 | Single Bay Slotted Uprights |



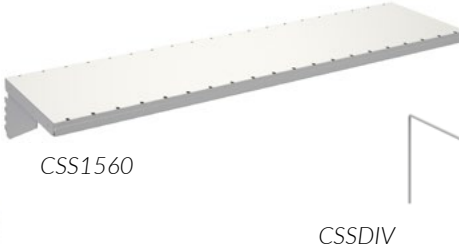
| PART NO. | DESCRIPTION |
|----------|-----------------------------|
| DBUP53 | Double Bay Slotted Uprights |



| PART NO. | DESCRIPTION |
|----------|-----------------------------|
| TBUP53 | Triple Bay Slotted Uprights |



| PART NO. | DESCRIPTION |
|----------|---|
| SH0830 | Steel Shelf, 8"d x 30"w |
| SH1230 | Steel Shelf, 12"d x 30"w |
| SH1530 | Steel Shelf, 15"d x 30"w |
| DIV1215 | Steel Shelf Divider, SH1230 & SH1530 Compatible |



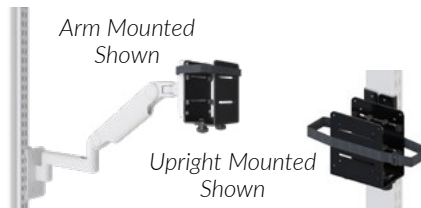
| PART NO. | DESCRIPTION |
|----------|--------------------------------------|
| CSS1530 | Corrugate Storage Shelf, 15"d x 30"w |
| CSS1560 | Corrugate Storage Shelf, 15"d x 60"w |
| CSSDIV | Corrugate Storage Shelf Divider |



| PART NO. | DESCRIPTION |
|----------|--|
| M2AH | Adjustable Height Articulating Upright Mount Monitor Arm |



| PART NO. | DESCRIPTION |
|----------|---|
| M2FH | Fixed Height Articulating Upright Mount Monitor Arm |



| PART NO. | DESCRIPTION |
|----------|------------------------|
| CPUTC | CPU Holder Thin Client |



| PART NO. | DESCRIPTION |
|----------|-------------|
| CPU12 | CPU Holder |
| CPU20 | CPU Holder |



| PART NO. | DESCRIPTION |
|----------|--|
| KAAH | Adjustable Height Articulating Upright Mount Keyboard Tray w/ Mouse Platform |



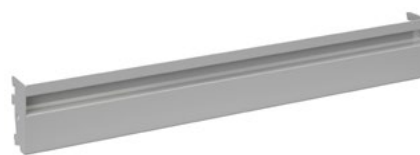
| PART NO. | DESCRIPTION |
|----------|---|
| KAFH | Fixed Height Articulating Upright Mount Keyboard Tray w/ Mouse Platform |



| PART NO. | DESCRIPTION |
|----------|--|
| UWKMS | Under-WS Keyboard Tray w/ Sliding Mouse Platform |
| UWKMP | Under Work Surface Keyboard & Mouse Platform |

BOSTONtec

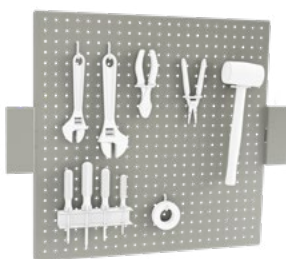
CONTACT US | 989-496-3500



| PART NO. | DESCRIPTION |
|-----------|---|
| LED243248 | LED Overhead Light (4) 24" Bulbs, 48" Tool Track |
| LED225660 | LED Overhead Light (2) 48" Bulbs, 60" Tool Track |
| LED225672 | LED Overhead Light (2) 48" Bulbs, 72" Tool Track |

| PART NO. | DESCRIPTION |
|-------------|------------------------------------|
| PWRBAR815SB | Horizontal 8-Outlet Power Bar, 15A |
| PWRBAR820SB | Horizontal 8-Outlet Power Bar, 20A |

| PART NO. | DESCRIPTION |
|----------|-------------|
| BR0429 | Bin Rail |



| PART NO. | DESCRIPTION |
|----------|------------------|
| SHR830 | Spool Holder Rod |

| PART NO. | DESCRIPTION |
|----------|---------------------|
| BS2428P | 24" x 28" Peg Board |

| PART NO. | DESCRIPTION |
|----------|-----------------------|
| BS2428 | 24" x 28" Backscreen |
| BS2428W | 24" x 28" White Board |



| PART NO. | DESCRIPTION |
|----------|------------------------|
| FSFR | Free Standing Footrest |

| PART NO. | DESCRIPTION |
|----------|---|
| DR0303 | (1) 3"h Drawer, 3"h x 18"d x 12"w, Non-Locking |
| DR0606 | (1) 6"h Drawer, 6"h x 18"d x 12"w, Non-Locking |
| DR1212 | (1) 12"h Drawer, 12"h x 18"d x 12"w, Non-Locking |

| PART NO. | DESCRIPTION |
|------------|--|
| DR120606 | 2-6"h Drawers Stacked, 12"h x 18"d x 12"w |
| DR18060606 | 1-6"h & 1-12"h Drawers Stacked, 18"h x 18"d x 12"w |
| DR21030612 | 1-6"h & 1-12"h Lateral File Draw- ers Stacked, 18"h x 18"d x 12"w |
| DR180612 | 2-12"h Drawers Stacked, 24"h x 18"d x 12"w |

LABORATORY

MEDICAL DEVICE ASSEMBLY

PHARMACEUTICALS

HEALTHCARE

EDUCATION



Laboratory workstations are compatible with accessories within the laboratory section only.

BOSTONtec



LABORATORY

Build Your Own Workstation in 4 Simple Steps!

1

Select
Workstation
Base Frame

2

Select
Feet or Casters
Type

3

Select
Work Surface
Type

4

Select
Accessories

Typical Laboratory Workstation





LABORATORY HEIGHT ADJUSTABLE WORKSTATIONS

Electric Height Adjustable Laboratory Workstation

This workstation is ideal for multiple users and maximum reconfigurability in a fast paced lab environment. Work surface height is easily adjustable at the touch of a button.



Load Capacity
1,200 lbs* | **ELECTRIC**

Manual Height Adjustable Laboratory Workstation

This frame is best for single-shift, single-operator applications where frequent height changes are not required. Height adjustments are made by removing the locking hand screw, repositioning the telescoping leg to the desired height and replacing the locking hand screw.



Load Capacity
1,200 lbs* | **MANUAL**

FEATURES:

- Cantilevered style leg ensures ample leg room
- Designed to support 5th to 95th percentile operators in a sitting or standing posture
- Adjusts 28" to 44" without work surface
- Programmable switch provides digital height read-out and preset adjustability
- Electric style has dual-synchronized linear actuators with integral limit switches, 12 VDC low voltage control
- Supports [ADA compliance](#)
- White epoxy powder coat finish
(Additional colors available)
- [Work surface](#) and [accessories](#) ordered separately; not compatible with Industrial and Office accessories.

FEET AND CASTERS

Leveler Feet

- Allow user to level workstation on uneven surfaces
- Leveler glides included
- Shown above on LMC model



Universal Locking Casters

- All 4 locking casters
- Polyurethane on polyolefin wheel
- 5.12" overall height; 4" wheel
- Non-marking



Universal Leveling Casters

- Nylon wheel; rubber leveling pad
- 2 1/2" wheel; 4 1/2" overall height on leveler
- Non-marking



See [chart](#) for foot and caster ordering information.

BUILD YOUR PART NUMBER

Electric: LPC **Manual:** LMC

Available in depths: 30" | 36"

Available in widths: 36" | 48" | 60" | 72"

Additional sizes available upon request

**Based on evenly distributed loads*

LPC3060

Prefix Depth Width
(based on work surface size)

BOSTONtec



CONTACT US | 989-496-3500



LABORATORY UTILITY TABLES

Laboratory Utility Table

This sturdy, four-post workstation is available with leg extensions or casters. The leg extensions are inserted inside the workstation legs and secured with machine screws.

FEATURES:

- Ships knocked down (KD)
- White epoxy powder coat finish
(Additional colors available)
- Work surface and accessories ordered separately;
not compatible with Industrial and Office accessories.

Utility Table with Leg Extensions and Leveler Glides (LUE)

- 8" of height adjustment
- Includes leveler glides and leg extensions

Utility Table with Casters (LUC)

- Fixed height
- Includes 2-locking and 2-non-locking casters
- 3" polyurethane casters

Utility Table with Leg Extensions and Casters (LUX)

- 8" of height adjustment
- Includes 2-locking and 2-non-locking casters
- 3" polyurethane casters



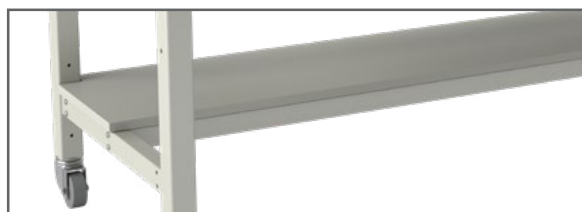
Load Capacity
1,000 lbs* | LUE



Load Capacity
600 lbs* | LUC

Under Work Surface Shelving

- Provides additional storage for occasional use items
- Available in half or full depth
- Choice of Phenolic Resin, Epoxy or Laminate surface



BUILD YOUR PART NUMBER

LUE: Utility Table with Leveler Glides and Leg Extensions

LUC: Utility Table with Swivel Casters

LUX: Utility Table with Swivel Casters and Leg Extensions

Available in heights: 30" | 36"

Available in depths: 30" | 36"

Available in widths: 36" | 48" | 60" | 72"

Additional sizes available upon request *Based on evenly distributed loads

LUC303660

Prefix Height Depth Width
(based on work surface size)

CONTACT US | 989-496-3500

BOSTONtec

□ **B** □ □ □

Support Your Researchers

Ergonomic Workstations Designed for Your Unique Needs

View More Details



SCAN ME
Hold camera to
image



Laboratory Workstations & Workbenches

Your best R&D work is yet to come when you provide your valuable team with a safe, productive, and comfortable work environment. With BOSTONtec you can expect a workstation with clean aesthetics for your professional lab. Its modular design is complemented by add-on accessories that specifically support lab tasks.

KEY BENEFITS :

- Increase laboratory efficiency with well-designed stations
- Shorten time to market with an adaptable modular design
- Increase employee retention with a sound ergonomic work environment
- Virtually maintenance-free thanks to high-quality design and components
- Save cost, by reducing employee strains and injuries
- Keep your employees safe with a focus on ergonomics

BOSTONtec





LABORATORY WORK SURFACES

Premium Grade Laminate

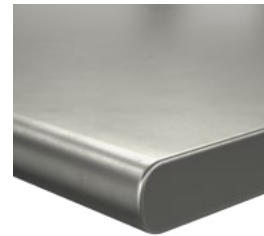
This highly durable work surface is constructed with a top layer of 1/4" thick laminate over 1 1/8" high density core board.

Standard Edge



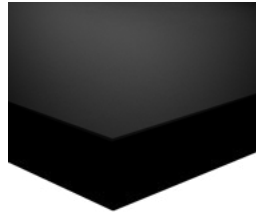
All four sides are edged with a high-impact-resistant 3mm thick PVC edging in a complementary color. Finished with a 2mm radius.

Stainless Steel



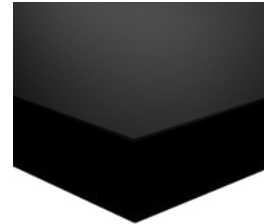
Durable and chemical-resistant, 1 1/2" stainless steel work surfaces are constructed of 304 grade, 14 gauge stainless steel formed over a sealed laminated core board. Work surface comes with a 2B random brushed finish and is non-reflecting.

Phenolic Resin



Our lab-grade, 1-inch thick phenolic resin work surface is made of thermoset resin composite, ideal for medium-duty applications. It provides high resistance to chemicals, bacteria, corrosion, fungi, and moisture. It can withstand continuous heat exposure up to 350°F. The standard color is black with additional color options available upon request.

Epoxy



A monolithic thermosetting material composed of modified epoxy resin and a fine filler material. This material exhibits exceptional structural strength and excellent chemical resistance. Finished edges are the same material as the work surface. Thickness is 1".

For additional work surface options, please refer to the [industrial work surfaces](#) pages | Standard Color: Black; additional colors available. See [QuickShip](#) page for eligibility.

CONTACT BOSTONtec FOR ORDERING INFORMATION

CONTACT US | 989-496-3500





LABORATORY ACCESSORIES



| PART NO. | DESCRIPTION | WEIGHT |
|----------|---|--------|
| URS13636 | 36"h Uprights for 36"w workstation (set of 2) | 18 lbs |
| URS13648 | 36"h Uprights for 48"w workstation (set of 2) | 18 lbs |
| URS13660 | 36"h Uprights for 60"w workstation (set of 3) | 27 lbs |
| URS13672 | 36"h Uprights for 72"w workstation (set of 3) | 27 lbs |

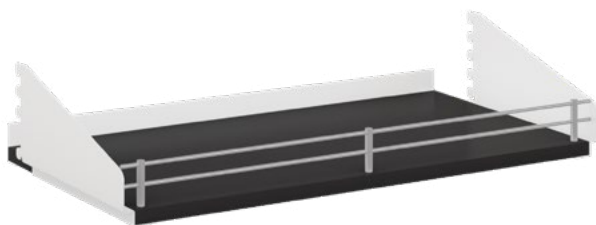
Surface-Mount, Steel Slotted Uprights

UPRIGHT CAPACITY FOR 36"W & 48"W WORKSTATIONS: 150 lbs

UPRIGHT CAPACITY FOR 60"W & 72"W WORKSTATIONS: 225 lbs

- Allow convenient access to accessories with optimal ergonomic reach access increasing productivity
- Slotting pattern allows adjustment in 1" increments without tools
- Accept laboratory accessories only
- Include hardware and mounting brackets
- White epoxy powder coat finish [Additional colors available](#)

| PART NO. | DESCRIPTION | WEIGHT |
|----------|---|--------|
| URS14836 | 48"h Uprights for 36"w workstation (set of 2) | 24 lbs |
| URS14848 | 48"h Uprights for 48"w workstation (set of 2) | 24 lbs |
| URS14860 | 48"h Uprights for 60"w workstation (set of 3) | 36 lbs |
| URS14872 | 48"h Uprights for 72"w workstation (set of 3) | 36 lbs |



Premium Grade Laminate Shelf

30"W SHELF CAPACITY: 100 lbs

36"W SHELF CAPACITY: 120 lbs

48"W SHELF CAPACITY: 160 lbs

- Provides additional storage space within operator reach to keep work surface space available
- Includes a structural rear retainer lip
- Includes two angled brackets with white epoxy powder coat finish [\(Additional colors available\)](#)
- Standard black laminate; additional colors available

| PART NO. | DESCRIPTION | WEIGHT |
|--------------|---|--------|
| SU011236LNAS | 0.75"h x 12"d x 36"w Shelf without rail for 36" workstation | 11 lbs |
| SU011236LDAS | 0.75"h x 12"d x 36"w Shelf with double rail front lip for 36" workstation | 11 lbs |
| SU011248LNAS | 0.75"h x 12"d x 48"w Shelf without rail for 48" workstation | 14 lbs |
| SU011248LDAS | 0.75"h x 12"d x 48"w Shelf with double rail front lip for 48" workstation | 14 lbs |
| SU011260LNAS | 0.75"h x 12"d x 30"w Shelf without rail for 60" workstation | 9 lbs |
| SU011260LDAS | 0.75"h x 12"d x 30"w Shelf with double rail front lip for 60" workstation | 9 lbs |
| SU011272LNAS | 0.75"h x 12"d x 36"w Shelf without rail for 72" workstation | 11 lbs |
| SU011272LDAS | 0.75"h x 12"d x 36"w Shelf with double rail front lip for 72" workstation | 11 lbs |

BOSTONtec



CONTACT US | 989-496-3500



LABORATORY ACCESSORIES



Metal Shelf

30" W SHELF CAPACITY: 100 lbs

36" W SHELF CAPACITY: 120 lbs

48" W SHELF CAPACITY: 160 lbs

- Provides additional storage space within operator reach to keep work surface open
- Includes two angled brackets
- Includes a structural rear retainer lip
- White epoxy powder coat finish ([Additional colors available](#))

| PART NO. | DESCRIPTION | WEIGHT |
|--------------|---|---------|
| SU011236MNAS | 0.75"t x 12"d x 36"w Shelf without rail for 36" workstation | 9 lbs |
| SU011236MDAS | 0.75"t x 12"d x 36"w Shelf with double rail front lip for 36" workstation | 9 lbs |
| SU011248MNAS | 0.75"t x 12"d x 48"w Shelf without rail for 48" workstation | 12 lbs |
| SU011248MDAS | 0.75"t x 12"d x 48"w Shelf with double rail front lip for 48" workstation | 12 lbs |
| SU011260MNAS | 0.75"t x 12"d x 30"w Shelf without rail for 60" workstation | 7.5 lbs |
| SU011260MDAS | 0.75"t x 12"d x 30"w Shelf with double rail front lip for 60" workstation | 7.5 lbs |
| SU011272MNAS | 0.75"t x 12"d x 36"w Shelf without rail for 72" workstation | 9 lbs |
| SU011272MDAS | 0.75"t x 12"d x 36"w Shelf with double rail front lip for 72" workstation | 9 lbs |



Standard LED Under Shelf Light

- 3500 K light color
- 24" light: 72 LEDs, 700 lumens; 44" light: 132 LEDs, 1313 lumens
- 40-watt power supply
- Built-in on/off switch with 100%-15% dimming capability
- Screw, magnetic mounting clips, and wire management included
- 10' power cord. Adder option includes 18" jumper cord

| PART NO. | DESCRIPTION | WEIGHT |
|----------|-------------------------|--------|
| SLS24S | 24"w Task Light Starter | 3 lbs |
| SLS24A | 24"w Task Light Adder | 3 lbs |
| SLS44 | 44"w Task Light | 5 lbs |



LABORATORY ACCESSORIES



Premium LED Under Shelf Light

- 3500 K light color
- 24" light: 36 LEDs, 721 lumens; 44" light: 72 LEDs, 1446 lumens
- 60-watt power supply
- Built-in on/off switch with 100%-15% dimming capability
- Screw, magnetic mounting clips, and wire management included
- 11' power cord. Adder option includes 8" and 30" jumper cords

| PART NO. | DESCRIPTION | WEIGHT |
|----------|-------------------------|--------|
| SLP24S | 24"w Task Light Starter | 3 lbs |
| SLP24A | 24"w Task Light Adder | 3 lbs |
| SLP44 | 44"w Task Light | 5 lbs |



CPU12



CPU20

Under Work Surface CPU Holders

CAPACITY CPU12: 15 lbs

CAPACITY CPU20: 50 lbs

- Securely holds CPU off of floor and provides easy access when needed
- Easy installation via Quick Lock Technology
- Adjusts to fit CPUs 1"-5"w by 6"-12"h (CPU12)
- Adjusts to fit CPUs 3½"-9"w by 12"-20"h (CPU20)
- Slides smoothly on nylon glides in 16" track
- 360° degree swivel allows access to cables and ports
- Mounts under all laminate and hardwood work surfaces at least 30"d

| PART NO. | DESCRIPTION | WEIGHT |
|----------|-------------|--------|
| CPU12 | CPU Holder | 9 lbs |
| CPU20 | CPU Holder | 11 lbs |



Adjustable Height Articulating Monitor Arm

CAPACITY: 15.5 lbs

- Provides optimum flexibility to move monitor into position
- Has tilt adjustability for improved viewing angle
- Holds monitor in place
- Height adjustability range = 10"
- Extension adjustability range = 22"

| PART NO. | DESCRIPTION | WEIGHT |
|----------|--|--------|
| M2AHL | Adjustable Height Articulating Upright Mount Monitor Arm | 7 lbs |

BOSTONtec



CONTACT US | 989-496-3500



LABORATORY ACCESSORIES



| PART NO. | DESCRIPTION | WEIGHT |
|----------|---|----------|
| KAAHL | Adjustable Height Articulating Upright Mount Keyboard Tray w/Mouse Platform | 15.5 lbs |

Adjustable Height Articulating Keyboard Tray with Mouse Platform

CAPACITY: 15.5 lbs

- Provides optimum flexibility to move keyboard into ergonomic position
- Keyboard tray rotates for easy adjustment
- Holds tray securely in place
- Tray includes 2" padded ergonomic wrist support strip for operator comfort
- Height adjustability range = 10"
- Extension adjustability range = 22"
- Keyboard tray is 10 ½"d x 19"w; mouse platform is 8 ¾" diameter



UWKMS



UWKMP

Under Work Surface Keyboard Tray with Sliding Mouse Platform

CAPACITY: 15 lbs

- Compatible with LPC, LMC, LUE, and LUC at all available depths.
- 18" track to allows operator to access or stow as needed
- 0°-15° tilt
- 7" height adjustability

Keyboard Tray with Sliding Mouse Platform

- Tray size 10.625"d x 19"w
- Includes 19" Technogel palm support

Mouse Platform

- 9" diameter
- 8" slide adjustment
- Left/right adaptable slide mount to suit user preference



| PART NO. | DESCRIPTION | WEIGHT |
|----------|---|--------|
| UWKMS | Under-WS Keyboard Tray w/Sliding Mouse Platform | 19 lbs |

Keyboard and Mouse Tray

- Tray size 10.625"d x 27"w
- Includes 27" Technogel palm support
- Built-in left/right mouse area



| PART NO. | DESCRIPTION | WEIGHT |
|----------|--|--------|
| UWKMP | Under Work Surface Keyboard & Mouse Platform | 19 lbs |



LABORATORY ACCESSORIES



(Fourth set of duplex outlets
located on power manifold back)

Power Manifold

- Allows convenient access to electricity and/or data usage
- Data ports are non-wired
- 20A rated manifold
- Cord Length: 15'
- White epoxy powder coat finish ([Additional colors available](#))

Four Duplex Outlets

| PART NO. | DESCRIPTION | WEIGHT |
|----------------|-----------------------------------|--------|
| PM00URS1G03615 | For 36" wide table | 4 lbs |
| PM00URS1G04815 | For 48" wide table | 4 lbs |
| PM00URS1G06015 | For 60" wide table (30" manifold) | 5 lbs |
| PM00URS1G07215 | For 72" wide table (36" manifold) | 6 lbs |

Four Duplex Outlets & One Data Port

| PART NO. | DESCRIPTION | WEIGHT |
|----------------|-----------------------------------|--------|
| PM01URS1G03615 | For 36" wide table | 4 lbs |
| PM01URS1G04815 | For 48" wide table | 4 lbs |
| PM01URS1G06015 | For 60" wide table (30" manifold) | 5 lbs |
| PM01URS1G07215 | For 72" wide table (36" manifold) | 6 lbs |



Gas Manifold

- Allows convenient access to gases
- Open back design
- White epoxy powder coat finish ([Additional colors available](#))

Three Fixture Holes

| PART NO. | DESCRIPTION | WEIGHT |
|------------|-----------------------------------|--------|
| GM50URS136 | For 36" wide table | 2 lbs |
| GM50URS148 | For 48" wide table | 2 lbs |
| GM50URS160 | For 60" wide table (30" manifold) | 3 lbs |
| GM50URS172 | For 72" wide table (36" manifold) | 4 lbs |

Four Fixture Holes

| PART NO. | DESCRIPTION | WEIGHT |
|------------|-----------------------------------|--------|
| GM51URS136 | For 36" wide table | 2 lbs |
| GM51URS148 | For 48" wide table | 2 lbs |
| GM51URS160 | For 60" wide table (30" manifold) | 3 lbs |
| GM51URS172 | For 72" wide table (36" manifold) | 4 lbs |



LABORATORY ACCESSORIES

Hanging Cabinets

- Durable under work surface storage to keep work surface space available
- Premium grade laminate with 3mm edging
- Available in standard gray; additional colors available upon request



| PART NO. | DESCRIPTION | WEIGHT |
|---------------------------|---|---------|
| KA051242418 / KA052242418 | Hanging laminate cabinet with hinged left/right door with (2) pull-out shelves, 24h x 24d x 18w | 88 lbs |
| KA051242424 / KA052242424 | Hanging laminate cabinet with hinged left/right door & (2) pull-out shelves - 24h x 24d x 24w | 104 lbs |
| KA403242418 | Hanging cabinet with (3) drawers - 24h x 24d x 18w | 102 lbs |
| KA403242424 | Hanging cabinet with (3) drawers - 24h x 24d x 24w | 120 lbs |
| KA010242424 | Hanging cabinet with (2) doors - 24h x 24d x 24w | 84 lbs |
| KA010242430 | Hanging cabinet with (2) doors - 24h x 24d x 30w | 91 lbs |
| KA010242436 | Hanging cabinet with (2) doors - 24h x 24d x 36w | 99 lbs |
| KA050242424 | Hanging cabinet with (2) doors and (2) pull-out shelves - 24h x 24d x 24w | 104 lbs |
| KA050242430 | Hanging cabinet with (2) doors and (2) pull-out shelves - 24h x 24d x 30w | 115 lbs |
| KA050242436 | Hanging cabinet with (2) doors and (2) pull-out shelves - 24h x 24d x 36w | 126 lbs |
| KA454242418 | Hanging cabinet with (2) drawers and (1) lateral file drawer - 24h x 24d x 18w | 108 lbs |
| KAKA3042418 | Hanging knee drawer with (1) drawer - 4h x 24d x 18w | 29 lbs |
| KAKA3042424 | Hanging knee drawer with (1) drawer - 4h x 24d x 24w | 34 lbs |
| KAKA3042430 | Hanging knee drawer with (1) drawer - 4h x 24d x 30w | 42 lbs |

Resources

TROUBLESHOOTING

Have a question?

We have your all access pass to all things ergonomics. On bostontec.com everything from [Literature Downloads](#) to [Blogs](#) are just a click away!

Check out our [Troubleshooting Guide](#) by scanning the QR code.



CUSTOMER SERVICE

Did you know?

You can receive information specific to your workstation by referencing the manufacturing number label on the underside of the workstation base.

Contact us for questions at bostontec.com.



How do we set the standard for Shipping and Packaging?

- Bigger and stronger pallets
- Extra protection for the table top
- Additional reinforcement
- Sustainable packaging



FEET AND CASTER PART NUMBERS

INDUSTRIAL

For descriptions and images of feet and casters, see the [industrial section](#).

| WORKSTATION MODEL | DEPTH | LEVELER FEET | UNIVERSAL LOCKING CASTER (4 LOCKING) | MEDIUM DUTY ESD CASTER (4 LOCKING) | UNIVERSAL LEVELING CASTER |
|-------------------|-------|--------------|--------------------------------------|------------------------------------|---------------------------|
| AFH | 24 | FA24C | FE24C | N/A | FK24C |
| | 30 | FA30C* | FE30C* | N/A | FK30C |
| | 36 | FA36C* | FE36C* | N/A | FK36C |
| AFHC | 30 | FA30D | FE30D | N/A | FK30D |
| | 36 | FA36D | FE36D | N/A | FK36D |
| | 48 | FA48D | FE48D | N/A | FK48D |
| PBM | 24 | FA24P | FE24P | FG24P | FK24P |
| | 30 | FA30P* | FE30P* | FG30P | FK30P |
| | 36 | FA36P* | FE36P* | FG36P | FK36P |
| PBMC | 30 | FA30Q | FE30Q | FG30Q | FK30Q |
| | 36 | FA36Q | FE36Q | FG36Q | FK36Q |
| | 48 | FA48Q | FE48Q | FG48Q | FK48Q |
| PBH | 24 | FA24I | FE24I | N/A | FK24I |
| | 30 | FA30I* | FE30I* | N/A | FK30I |
| | 36 | FA36I* | FE36I* | N/A | FK36I |
| PBHC | 30 | FA30J | FE30J | N/A | FK30J |
| | 36 | FA36J | FE36J | N/A | FK36J |
| | 48 | FA48J | FE48J | N/A | FK48J |

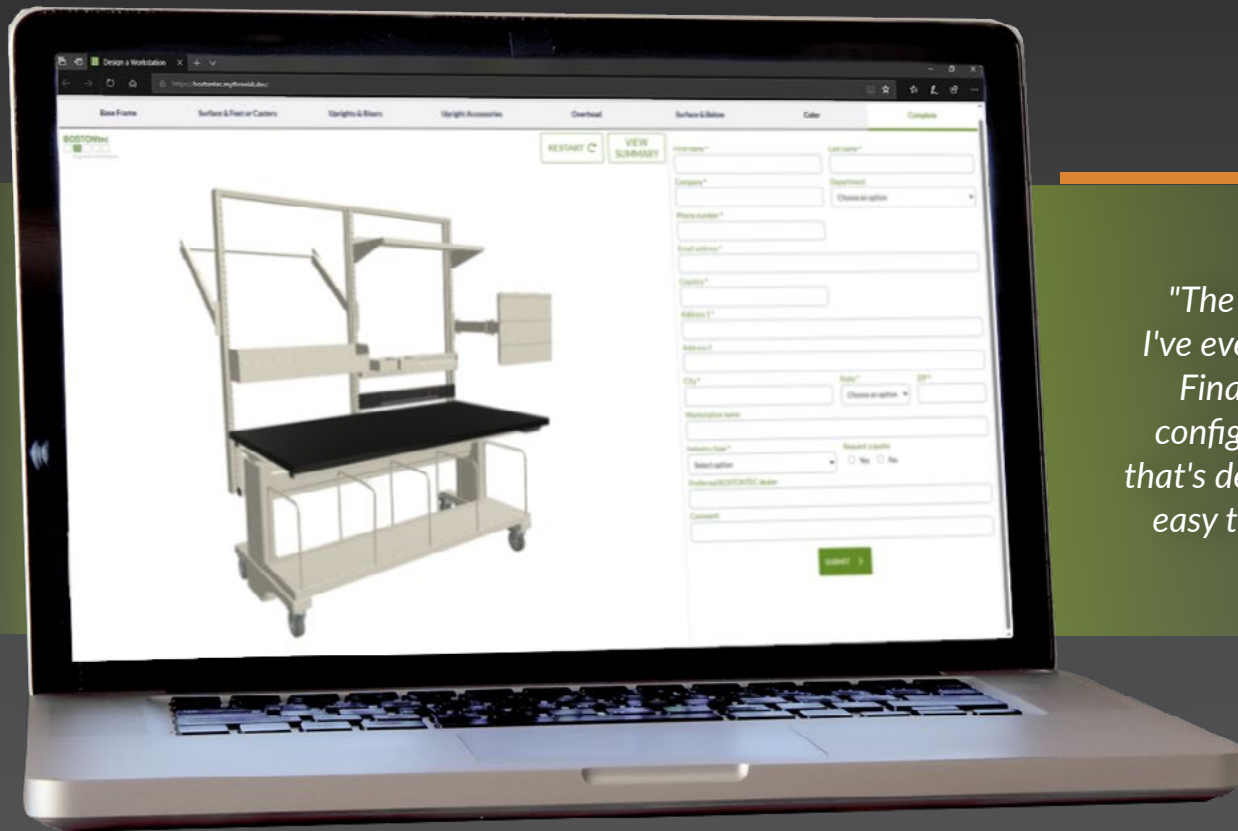
* [QuickShip](#) available item

LABORATORY

For descriptions and images of feet and casters, see the [laboratory section](#).

| TABLE TYPE | DEPTH | LEVELER FEET | UNIVERSAL LOCKING CASTER (4 LOCKING) | UNIVERSAL LEVELING CASTER |
|------------|-------|--------------|--------------------------------------|---------------------------|
| LMC | 30 | FA30M | FE30M | FK30M |
| | 36 | FA36M | FE36M | FK36M |
| LPC | 30 | FA30N | FE30N | FK30N |
| | 36 | FA36N | FE36N | FK36N |

Try our 3D Workstation Builder



*"The BEST
I've ever seen.
Finally, a
configurator
that's detailed &
easy to use!"*

Design Your **Ideal Workstation**

At BOSTONtec® we believe it's important to have a workstation that fits your needs. That's why we are excited to provide our online 3D builder tool!

Now you can drag and click your way to your ultimate workstation design! Don't see exactly what you are looking for? No problem! We're pros at customization. We design our workstations to adjust to you, rather than the other way around.

That's important, because a well-designed workplace can make people up to 25% more productive and reduce healthcare costs. It's also easier to retain talent in a healthy, comfortable environment. Ready to experience quality, ease, and durability?... Let's talk. Contact us at info@bostontec.com



989.496.3500 | 2700 James Savage Rd, Midland, MI 48642
Disclaimer: Product specifications and availability may change without notice

FOLLOW US ON:



bostontec.com