

PALLET WRAPPING EQUIPMENT

www.handleitinc.com





Product Highlight



Model 1200UL - Ultra Low

Patented 3/4" Ultra Low Profile Turntable Design

Perfect for use with hand or electric rider pallet jacks!



250% prestretch film carriage



8" ramp saves valuable floor space vs. extended ramps needed for most low-profile stretch wrappers

Eliminates risk of tips or falls off the sides of long ramps

No need for cutting a pit into your floors!

Simple setup and installation!

See pg 3 for more details!

Handle It® Stretch Wrap Machines

Semi-Auto (SA) Series

Low-Profile Semi-Automatic Stretch Wrap Machines

Model 600

The Handle It® Model 600 is designed for those who are currently hand wrapping their pallets and need a more efficient solution.

Designed for low use at a very affordable price. The 600 is a true semi-automatic with an auto pallet height sensor. The user-friendly control panel allows you to easily adjust the top & bottom wraps, turntable speed, carriage speed, and photo cell delay.

FEATURES & BENEFITS

- Max Load Size: 48"W x 72"L x 86"H
- Max Load Weight: 2,500 lbs
- Ideal usage: 15-20 pallets per day
- Simple, user-friendly controls
- Auto Pallet Height Sensor
- 110V Plug-In power source
- Variable speed turntable (3-12 RPM)
- Forklift portable
- 3 Programmable Settings
- 110V Plug-in power source



Model 800

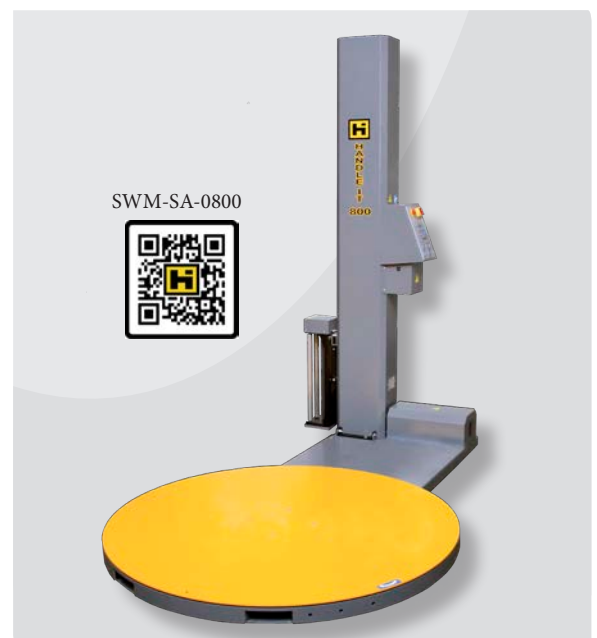
The Handle It® Model 800 is a mid-level machine, ideal for those wrapping up to 100 pallets per day.

It is designed for moderate use applications with an electronic film tensioner. The 800 is a true semi-automatic with an auto pallet height sensor. The user-friendly control panel allows you to easily adjust the top & bottom wraps, turntable speed, carriage speed, and photo cell delay.

"Playback Mode" allows you to record exact steps taken to wrap a load, save it, then use that "Playback Mode" again.

FEATURES & BENEFITS

- Max Load Size: 48"W x 72"L x 86"H
- Max Load Weight: 4,400 lbs
- Max average: 100 pallets per day
- Electronic film tensioner
- Variable speed turntable (3-12 RPM)
- Forklift portable
- Rack & Pinion carriage drive track
- 110V Plug-in power source





SA Series

Low-Profile Semi-Automatic Stretch Wrap Machines

Model 850PS



The Handle It Model 850PS is designed for moderate to heavy use applications where film savings is a concern. Powered pre-stretch carriage allows for up to 250% film prestretch. This unit is a true semi-automatic with an auto pallet height sensor. Equipped with a user-friendly control panel to allow customization of wrap cycles.

“Playback mode” allows you to record exact steps taken to wrap a load, save it, then use that “Playback Mode” again.

FEATURES & BENEFITS

- Max Load Size: 48”W x 72”L x 86”H
- Max Load Weight: 4,400 lbs
- Max average: 100 pallets per day
- Power prestretch carriage (up to 250% prestretch)
- 9 Programmable modes
- Customizable “Playback” mode
- Variable speed turntable (3-12 RPM)
- Forklift portable
- Rack & Pinion carriage drive track
- 110V Plug-in power source

Model 1100



The Handle It® Model 1100 is the workhorse of the SA Series; ideal for those wrapping an average of 300 pallets per day.

It is designed for heavy use applications with a 250% power prestretch carriage and auto cutoff as standard features. The 1100 is durable, efficient, and highly customizable. Perfect for standard heavy usage wraps, but with the flexibility for highly complex wrapping solutions.

FEATURES & BENEFITS

- Max Load Size: 48”W x 72”L x 94”H
- Max load weight: 4,400 lbs
- Max average: 300 pallets per day
- USB port to upload software, download settings, reports and statistics
- 32 programmable modes
- Power prestretch carriage (up to 250% prestretch)
- Variable speed turntable (3-12 RPM)
- Forklift portable
- 110V Plug-in power source

SA Series

Low-Profile Semi-Automatic Stretch Wrap Machines

The Handle It Model 1100AA-C is designed for high-volume, heavy use applications where film savings and automation are concerns.

It is designed for high-volume applications with auto cutoff & auto attach as standard features. Perfect for standard or complex wrapping solutions.

FEATURES & BENEFITS

- Max Load Size: 48"W x 72"L x 94"H
- Max load weight: 4,400 lbs
- Max average: 300 pallets per day
- Auto Cutoff feature
- Auto-Attach feature (requires air supply; remote control included)
- USB port to upload software, download settings, reports and statistics
- 32 programmable modes
- Power prestretch carriage (up to 250% prestretch)
- Variable speed turntable (3-12 RPM)
- Forklift portable
- 110V Plug-in power source

Model 1100AA-C



The Handle It® Model 1200UL is equipped with the lowest turntable on the market. Perfect for loading with pallet jacks and reducing the trip hazard risk ramps pose in the warehouse.

Ideal for those wrapping a max average of 200 pallets per day. The 1200UL is a true semi-automatic with an auto pallet height sensor. The user-friendly control panel allows you to easily adjust the parameters.

FEATURES & BENEFITS

- Max Load Size: 48"W x 72"L x 94"H
- Max load weight: 2,600 lbs
- 0.70" turntable height
- 3 sided ramp; 8" depth - included
- Max average: 200 pallets per day
- USB port to upload software, download settings, reports and statistics
- 32 programmable modes
- Power prestretch carriage (up to 250% prestretch)
- Variable speed turntable (3-12 RPM)
- 110V Plug-in power source

Model 1200UL





SA Series

Low-Profile Semi-Automatic Stretch Wrap Machines



SA Series - Optional Add-Ons

Extended Max Wrapping Height - up to 98"

- available on models: 800 & 850PS

Model Number	Description
SWM-SA-0800XHT	98" Extended Mast Height - Model 800
SWM-SA-0850XHT	98" Extended Mast Height - Model 850PS



Extended Wrap Height

Extended Max Wrapping Height - up to 118"

- available on models: 1100, 1100AA-C, & 1200UL

Model Number	Description
SWM-SA-1100XH	118" Extended Mast Height - Model 1100
SWM-SA-1100AAXH	118" Extended Mast Height - Model 1100AA-C
SWM-SA-1200ULXH	118" Extended Mast Height - Model 1200UL

Integrated Scale with Digital Readout

- Handle It turntable style stretch wrap machines can be outfitted with a factory-installed scale package. The scale is integrated into the frame of the unit & a digital display is mounted onto the mast.
- 4" label printer available for labeling load weights.

Model Number	Description	Weight (lbs.)
SWS-0850-ASM	Integrated Scale for Models 600, 800 & 850PS	185
SWS-1100-ASM	Integrated Scale for Models 1100 & 1100AA-C	75
SWS-PRN-DT4X	4" Label Printer for use with Scale	10



Digital Scale Display



Scale Label Printer

Light Curtain Safety Barrier

- Infrared light curtain that will shut down machinery quickly if the perimeter is compromised
- available on models: 1100, 1100AA-C & 1200UL (additional control components may be required)



Light Curtain Safety Barrier

Photocell for dark or reflective loads

- available on models: 600, 800, 850PS, 1100, 1100AA-C & 1200UL



SA Series - Optional Add-Ons (continued)

Extended Frame - Max Pallet Diagonal of 136"

- available on models: 1100

Model Number	Description
SWM-SA-1100XF	128" Extended Frame Length - Model 1100

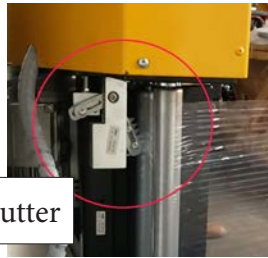
Extended Frame Length



Auto Film Cutter

- available on models: 1100, 1200UL, & MR-3000

Auto Film Cutter



Carriage Roping System

- available on models: 1100, 1100AA-C & 1200UL

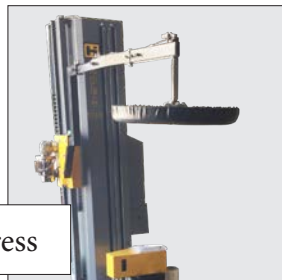
Roping Mechanism



Top Press

- available on models: 1100, 1100AA-C & 1200UL

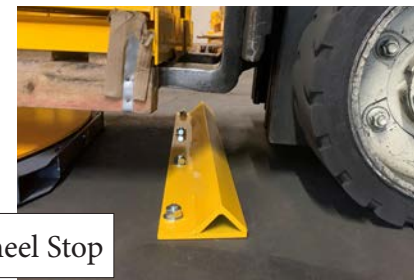
Top Press



Forklift Wheel Stop

- anchors to floor in front of wrapper to prevent damage by forklift wheel impacts.

Forklift Wheel Stop



Pallet Jack Ramps

- Handle It offers a ramp for use with pallet jacks along with extensions for use with an integrated scale or electric pallet jack.

Model Number	Description	Weight (lbs)
SWM-SA-STDRMP	Standard Ramp	140
SWM-EXD	Extended Ramp Deck <i>*for use with Powered Pallet Jacks</i>	102
SWM-SCD	Scale Ramp Deck <i>*for use with units with an Integrated Scale</i>	175

Standard Pallet Jack Ramp





Handle It® Stretch Wrap Machines

Mobile Robot (MR) Series

Mobile Robot Stretch Wrap Machines

Model 3000



The Handle It® Model 3000 Mobile Robotic Stretch Wrap Machine is designed to wrap pallets of large/odd size or heavy weight. Robustly built to handle a large workload and improve your packaging process.

FEATURES & BENEFITS

- Max load size: 94" tall x unlimited
- Max average: 200 pallets per day
- Speed: 1 - 3 MPH
- Power prestretch carriage
- Power supply: 2 x 12V AGM Batteries
- Photocell for pallet height detection
- 4 working cycles: up/down; topsheet; ascent; descent
- Siemens Simatic Touch Screen HMI

MACHINE OPTIONS

- Auto-cutoff system
- Roping system
- 118" max wrap height
- Photo cell for dark or reflective loads
- Double wheel
- Extra Batteries

Machine Grade Stretch Wrap Film

Handle It offers a premium, 20" wide, machine-grade stretch wrap film that can be used in any Handle It stretch wrapper.

- Heavy-duty, cast film
- Sold by the roll, case (4 pack), or pallet load (50 rolls)



Stretch Wrap Film

Item Number	Description	Weight per Roll (lbs.)
SWMF-20-140-30	3,000' length, 140 Gauge	40
SWMF-20-90-50	5,000' length, 90 Gauge	30





Handle It® Stretch Wrap Machines

Rotating Arm (RA) Series Rotating Arm Stretch Wrap Machines

The Rotating Arm (RA) Series is a line of semi-automatic machines that allow the pallet to remain stationary while the film carriage rotates around the pallet, wrapping it to the desired requirements.

Rotating arm stretch wrappers are on a fixed pedestal mount and bolted directly into the floor for a secure setup. 110V plug-in power source makes it easy to install and integrate into packaging operations in any facility.

A rotary arm style machine is the best solution in the following scenarios:

- Extremely heavy loads (over 4,400 lbs)
- Very light pallet loads
- Unstable pallet loads
- Tall pallets (up to 94")
- Washdown environment

Model 2200

The Handle It® Model 2200 is our introductory model to the Rotating Arm series. It allows you all the advantages of a rotating arm stretch wrap machine at an affordable price.

FEATURES & BENEFITS

- Max load size: 82" diagonal x 94" high
- Fixed pedestal mount
- 110V plug-in
- Photo eye auto pallet height sensor
- Power prestretch carriage (up to 250%)
- Safety stop loop at base
- Stop at 0 position
- 9 adjustable parameters
- 6 working cycles
- 32 end user program storage
- Wrapped pallet counter
- Rack & pinion carriage drive track
- Overall dimensions: 125" length x 113" width x 140" height

MAIN OPTIONS

- Adjustable power prestretch carriage (600%)
- Auto-cutoff system
- Roping system
- 118" max wrap height
- Remote control
- Photo cell for dark or reflective loads
- Upgraded arm for 48" x 48" loads





RA Series

Rotating Arm Semi-Automatic Stretch Wrap Machines

Model 2300



The Handle It® Model 2300 is a semi-automatic machine designed to function at an automatic production rate. The solid, well-built frame was created with quick and easy installation in mind without sacrificing the durability of a machine used for high volumes of pallet wrapping.

FEATURES & BENEFITS

- Max load size: 82" diagonal x 94"H
- Fixed pedestal mount
- 110V plug-in
- Photo eye auto pallet height sensor
- Power prestretch carriage (up to 250%)
- Safety stop loop at base
- Stop at 0 position
- 9 adjustable parameters
- 6 working cycles
- 32 end user program storage
- Wrapped pallet counter
- Rack & pinion carriage drive track

MAIN OPTIONS

- Adjustable power prestretch carriage (600%)
- Auto-cutoff system
- Roping system
- 118" max wrap height
- Remote control
- Photo cell for dark or reflective loads

RA Series - Option to Automate

Both the Handle It® Model 2200 and Model 2300 stretch wrappers are able to be assembled as fully automated machines.

The integrated system allows the operator to bring the pallet to the machine, and start the wrap cycle with a remote control without ever having to get off the forklift. The film is automatically attached and automatically cut which reduces packaging time and decreases risk of injury.

Model Number	Description
SWM-RA-2200AAC	Model 2200 Stretch Wrapper with Auto-Attach & Auto-Cut
SWM-RA-2300AAC	Model 2300 Stretch Wrapper with Auto-Attach & Auto-Cut

Handle It® Stretch Wrap Machines

Fully Automatic (FA) Series Fully Automated Stretch Wrap Machines

Model 4000

The Handle It® Model 4000 is a fully automatic turntable machine meant to be integrated with a conveyor system in your warehouse.

FEATURES & BENEFITS

- Max Load Size: 40"W x 48"L x 86"H (118"H option available)
- Max load weight: 3,800 lbs
- Loads per hour: 30
- Auto Cutoff & Auto-Attach
- 32 programmable modes
- Power prestretch carriage (up to 250% prestretch)
- Variable Speed Turntable (3-12 RPM)
- 480V 3 Phase power
- Rack & pinion carriage drive track



Model 4100

The Handle It® Model 4100 is our top-of-the-line fully automatic turntable machine meant to be integrated with a conveyor system in your warehouse.

FEATURES & BENEFITS

- Max Load Size: 40"W x 48"L x 86"H (118"H option available)
- Max load weight: 3,800 lbs
- Loads per hour: 40
- Auto Cutoff & Auto-Attach
- 32 programmable modes
- Power prestretch carriage (up to 250% prestretch)
- Variable Speed Turntable (3-12 RPM)
- Forklift Portable
- 480V 3 Phase power
- Rack & pinion carriage drive track





Fully Automatic (FA) Series

Fully Automated Stretch Wrap Machines



Model 4200



The Handle It® Model 4200 is our entry-level automatic rotary arm unit. Intended for warehouses with automated conveyor systems or for use as the integrated end-of-line wrapping machine.

FEATURES & BENEFITS

- Max Load Size: 40"W x 48"L x 95"H (less the conveyor height)
- Max load weight: conveyor determined
- Loads per hour: 30
- Auto Cutoff & Auto-Attach
- 32 programmable modes / Storage of 10 end user programs
- Power prestretch carriage (up to 250% prestretch)
- Photocell to detect the pallet height
- 18 RPM speed
- 480V 3 Phase power
- Rack & pinion carriage drive track
- Auto film-attach, wrapping, film cutting and hot sealing
- Perfect for very heavy or unstable pallets!

Model 4300



The Handle It® Model 4300 is our high output pillar style rotary arm unit. Intended for warehouses with automated conveyor systems or for use as the integrated end-of-line wrapping machine.

FEATURES & BENEFITS

- Max Load Size: 48"W x 48"L x 95"H (less the conveyor height)
- Max load weight: conveyor determined
- Loads per hour: 40
- Auto Cutoff & Auto-Attach
- 32 programmable modes / Storage of 10 end user programs
- Power prestretch carriage (up to 250% prestretch)
- 18 RPM speed
- 480V 3 Phase power
- Rack & pinion carriage drive track
- Auto film-attach, wrapping, film cutting and hot sealing

Fully Automatic (FA) Series

Fully Automated Stretch Wrap Machines

Model 4400

The Handle It® Model 4400 is a four-legged stretch wrapper with stability to enable high rotation speed of the carriage and therefore, higher production output. Intended to be integrated into an automated conveyor system.

FEATURES & BENEFITS

- Max Load Size: 48"W x 48"L x 95"H (less the conveyor height)
- Max load weight: conveyor determined
- Loads per hour: 50
- Auto Cutoff & Auto-Attach
- 32 programmable modes / Storage of 10 end user programs
- Power prestretch carriage (up to 250% prestretch)
- 25 RPM speed
- 480V 3 Phase power
- Rack & pinion carriage drive track
- Auto film-attach, wrapping, film cutting and hot sealing



The Handle It® Model 4500 is our top-of-the-line rotary arm stretch wrapper with maximized stability for maximum production output. Intended to be integrated into an automated conveyor system.

FEATURES & BENEFITS

- Max Load Size: 48"W x 48"L x 95"H (less the conveyor height)
- Max load weight: conveyor determined
- Loads per hour: 100+
- Auto Cutoff & Auto-Attach
- 32 programmable modes / Storage of 10 end user programs
- Power prestretch carriage (up to 250% prestretch)
- 40+ RPM speed
- 480V 3 Phase power
- Rack & pinion carriage drive track
- Auto film-attach, wrapping, film cutting and hot sealing





NOTES

- **Impact Protection**

Handle It carries a variety of impact protection products to protect your assets from costly damage.

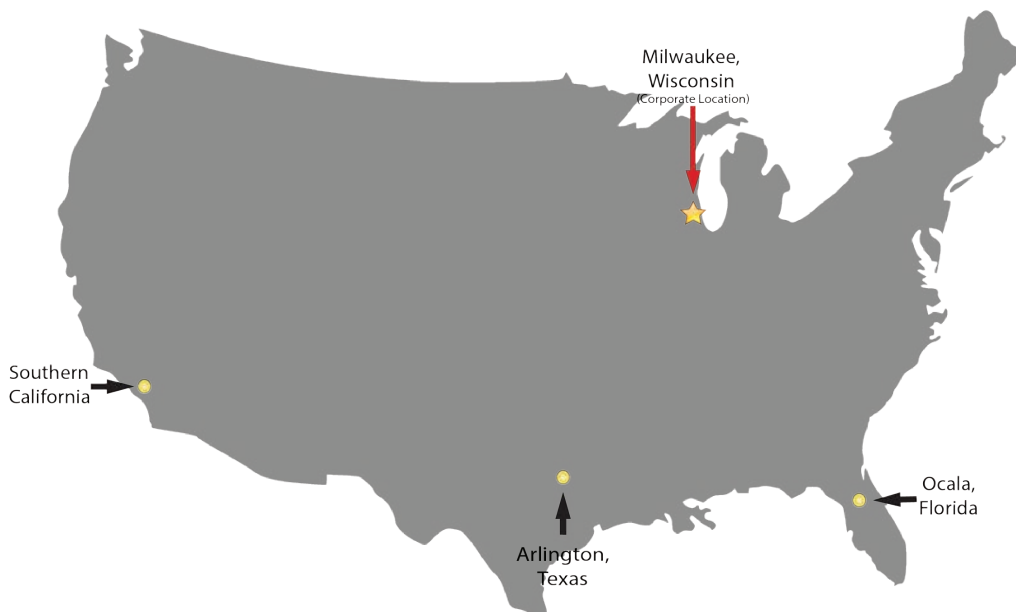


- **Orbital Stretch Wrap Machines**

Handle It Orbital Stretch Wrappers! Semi-Auto and Fully Automatic models in a variety of sizes.



Handle It Warehouse Locations





Sales Policies

Handle-It, Inc. prices are subject to change without notice. Handle-It, Inc. also reserves the right to alter product specifications, designs and shipping weight without notice. Customer service staff is available to provide written quotations for all products upon request.

Credit Policy

Standard terms of payment are net 30 days from date of invoice with approved credit. New distributors are required to prepay their first order prior to shipment. Handle-It, Inc. will not release any orders to distributors who have outstanding balances over 60 days from the invoice date. Handle-It, Inc. reserves the right to charge a 1.5% per month fee on outstanding balances over 30 days from the invoice date.

*Equipment purchases may be subject to a non-refundable deposit up to 50% at time of order; at the discretion of Handle-It, Inc.

*Steel product orders greater than \$20,000, or custom-designed product, require a 15% non-refundable deposit at time of order. The balance is billed at net 30 days.

Shipping Policy

All products are shipped FOB Factory; WI; CA; FL; or TX. Freight charges will be billed as specified on the purchase order. Parts weighing 70 lbs. or less will ship via UPS Ground, pre-paid & add, unless otherwise requested. Orders greater than 70 lbs. will be shipped common carrier. Published shipping weights may fluctuate due to options and/or packing material. Handle-It, Inc. reserves the right to add a handling charge to all orders. Handle-It, Inc. is not responsible for loss or damage in transit. It is the responsibility of the receiver (consignee) to inspect & document any damage at delivery. Handle-It, Inc. will assist the consignee whenever possible in filing freight claims.

Order Change Policy

If a purchase order for unshipped, standard or modified product is changed within seven calendar days after the receipt of the purchase order, there will be no charge. However, if a change is required for an unshipped unit from the eighth calendar day following the receipt of the purchase order, a surcharge will be assessed. In the event that the material unique to the purchase order has been purchased or manufactured, regardless of the time frame, and a change is required that eliminates the need for the purchased or manufactured material, the cost of the material as well as a surcharge will be added to the purchase order. All cancellations of purchase orders may be subject to a cancellation fee based on the stage of production. If a cancellation is received on the day of shipment, the Handle-It, Inc. restocking fee will apply. Cancellation of custom products will result in forfeiture of deposit plus any additional applicable fees.

Restocking Policy

The goal of Handle-It, Inc. is for the customer to be satisfied with their order. Merchandise may be returned, but is subject to a minimum 20% restocking fee.

***Custom items are NOT returnable.** Before returning any products, please contact the customer service staff at Handle-It, Inc. for instructions.

Customer service will provide an RMA number for any goods to be returned.

Limited Warranty Policy

Handle-It, Inc. provides a 3 year warranty from delivery date to be free from defects in materials and workmanship as described below. This warranty covers all of Handle-It's products (excluding SWM-MR-3000, which is a 2 year warranty) and assumes normal PM service will be performed by the user as outlined in the owner's manual. This warranty also assumes frequency of use of this product will not exceed the parameters outlined in the owner's manual.

During the warranty period, defects in material or workmanship may be repaired or replaced at the discretion of Handle-It, Inc. Rollers are not warranted against physical damage, corrosion, abuse or negligence. Wear parts such as belts, fuses, light bulbs, circuit breakers, brakes, motor brushes, slip ring brushes, etc. are excluded from this warranty.

Proof of purchase is required for warranty. The charge for shipping the defective components is the responsibility of the buyer; the shipment must be accompanied by an RMA number. The shipping charge to return the component to the buyer is the responsibility of Handle-It, Inc. This limited warranty does not cover labor expenses for removal or reinstallation of components.

This limited warranty shall not cover, among other things, damages resulting from foreign matter or water, or failure to follow operating instructions. The limited warranty is not valid for damage resulting from negligence, accident, unreasonable use, abuse or misuse, exceeding rating plate capacities or altering the product without Handle-It, Inc.'s written authorization.

Handle-It, Inc. makes no representation that this product complies with local, state, or federal safety/product standards or codes. Should this product fail to comply in any way with those codes, it shall not be considered a defect of materials or workmanship. Handle It, Inc. shall not be held liable for any damages resulting from noncompliance. It is the distributor's responsibility to exercise this limited warranty. This limited warranty is provided to the original purchaser (defined as the original end user) and is not transferable.

Exceptions: motors and gearboxes on all models carry a standard one (1) year limited manufacturers warranty.

Damage in transportation: Damage in transport is the responsibility of the carrier and is not covered under this warranty.

This constitutes the complete and final statement involving Handle-It, Inc. and the company's limited warranty obligations for Handle-It® brand products.

©2024 Handle It, Inc. All rights reserved.

Distributed by:

Handle It, Inc.

12247 W. Fairview Ave.

Milwaukee, WI 53226

Phone: 800-236-1080 | Fax: 414-453-9975

www.handleitinc.com